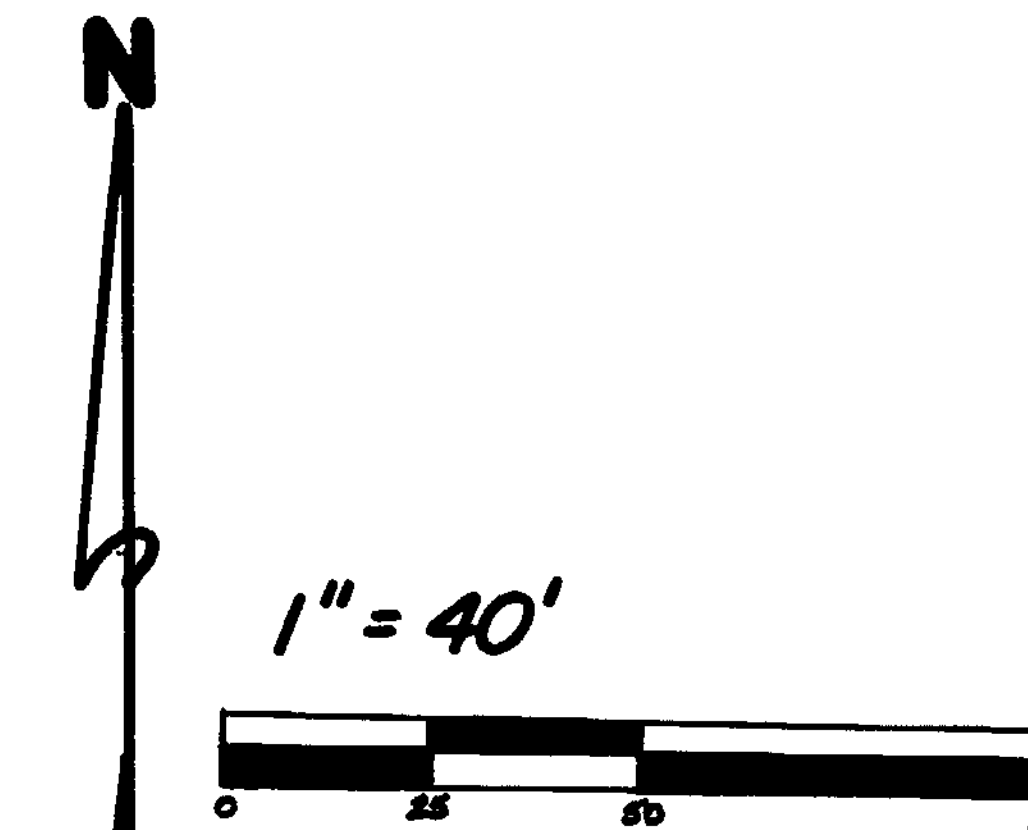
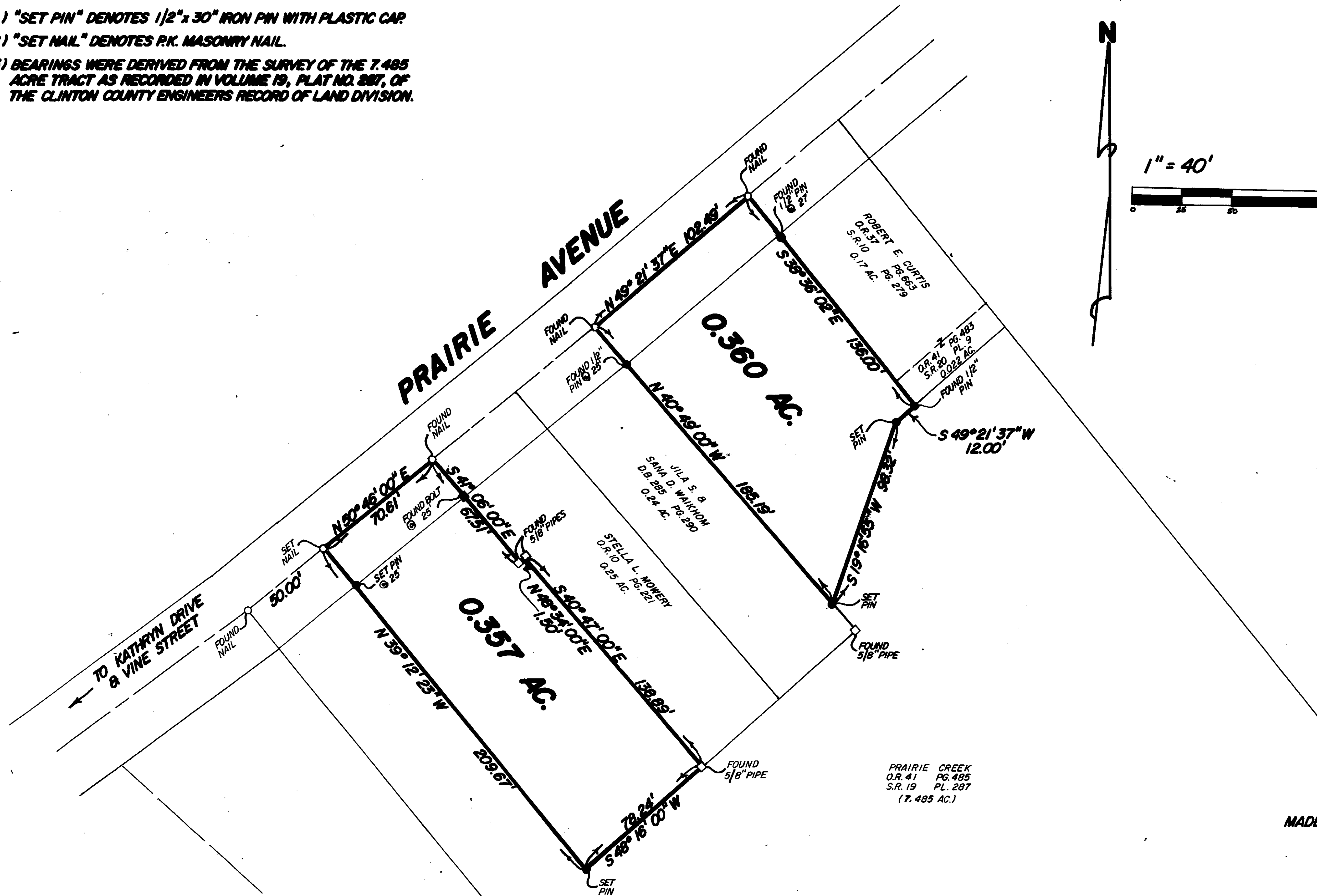


NOTES:

- (1) "SET PIN" DENOTES 1/2" x 30" IRON PIN WITH PLASTIC CAP
- (2) "SET NAIL" DENOTES P.K. MASONRY NAIL.
- (3) BEARINGS WERE DERIVED FROM THE SURVEY OF THE 7.485 ACRE TRACT AS RECORDED IN VOLUME 19, PLAT NO. 287, OF THE CLINTON COUNTY ENGINEERS RECORD OF LAND DIVISION.



RECEIVED BY THE WILMINGTON CITY PLANNING COMMISSION ON
August 22 1989.

Alva J. Martin
SECRETARY

APPROVED ON August 22 1989.

Chas. R. Roll
CHAIRMAN

Alva J. Martin
SECRETARY

I HEREBY CERTIFY THIS TO BE A CORRECT PLAT OF A SURVEY
MADE UNDER MY DIRECTION IN AUGUST, 1989.

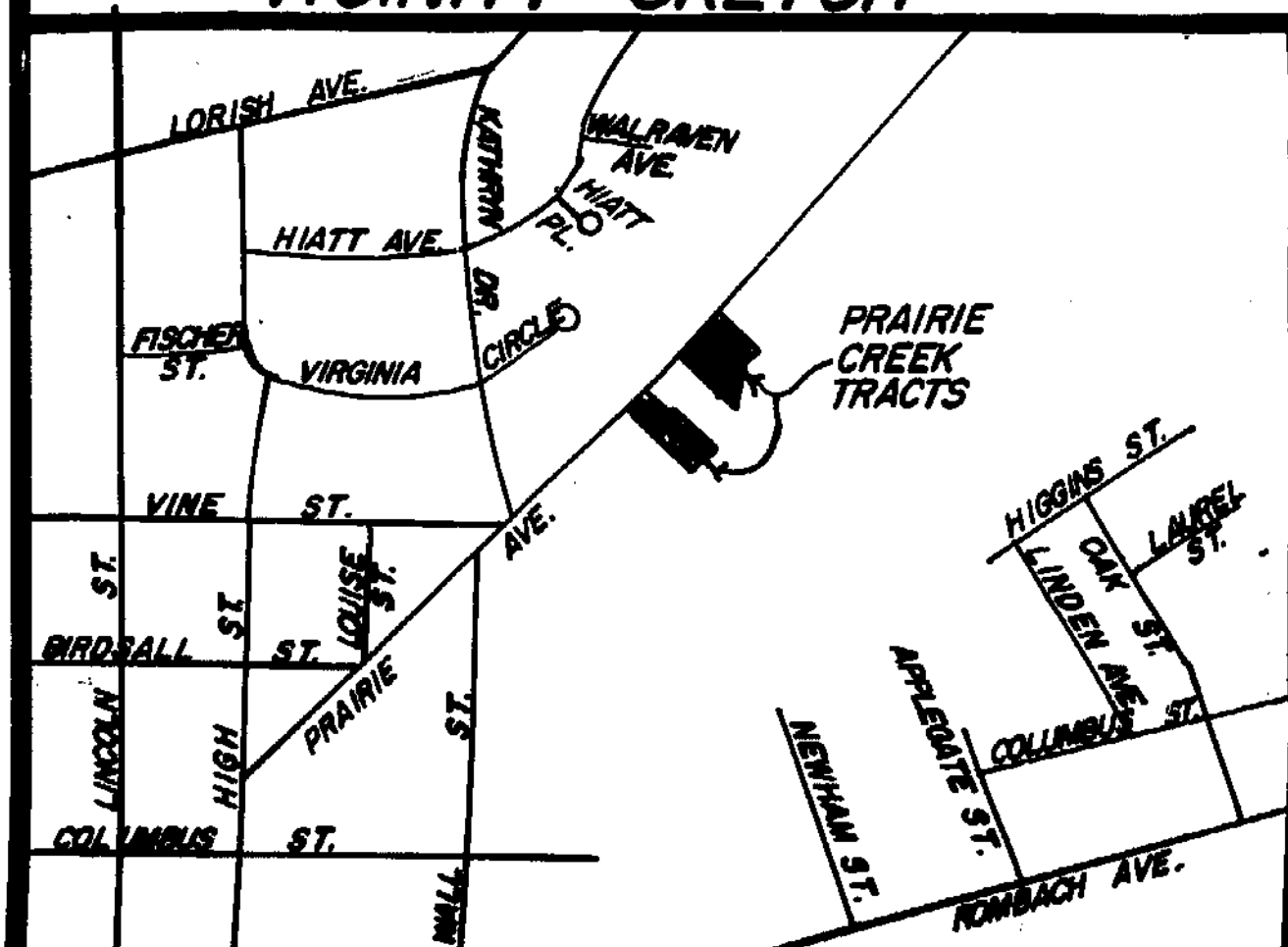
Richard D. Roll
REGISTERED SURVEYOR NO. 4957

APPROVED FOR
MATHEMATICAL ACCURACY
Clinton County Engineer
Per M. J. Kneibart
AUG 3 1989



SURVEY PLAT OF
PARTS OF **PRAIRIE CREEK** LANDS
SITUATED IN
MILITARY SURVEY NO. 2690
CITY OF WILMINGTON
UNION TOWNSHIP
CLINTON COUNTY, OHIO

VICINITY SKETCH



CLINCO ENGINEERS & SURVEYORS P.O. BOX 241		WILMINGTON, OHIO	
62 1/2 E. SUGARTREE ST. SCALE 1" = 40'	DRAWN BY MSH	CHECKED BY RDR	
DATE 8-1-89	DRWG. C-5621		