

0 200 400
SCALE: 1"=200'

BEARINGS ARE MAGNETIC
AND BASED UPON THE
S61°31'57"E LINE.

SOURCE OF DOCUMENTS
ARE DEED RECORDS
AS SHOWN ON PLAT.

VOLUME 20 PLAT NO. 149

CLINTON COUNTY ENGINEERS

RECORD OF LAND DIVISION

DATE: 4-27-1989

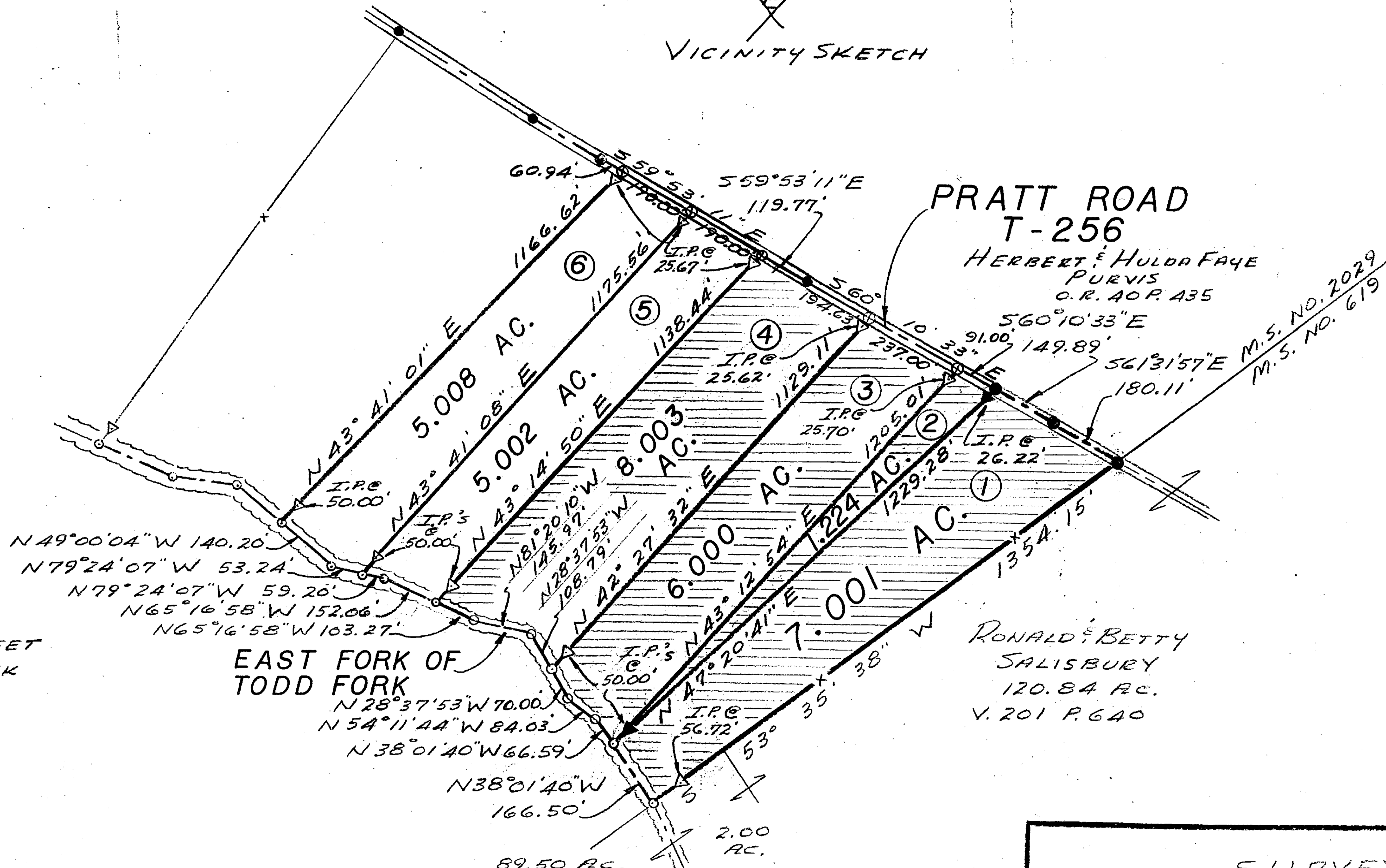
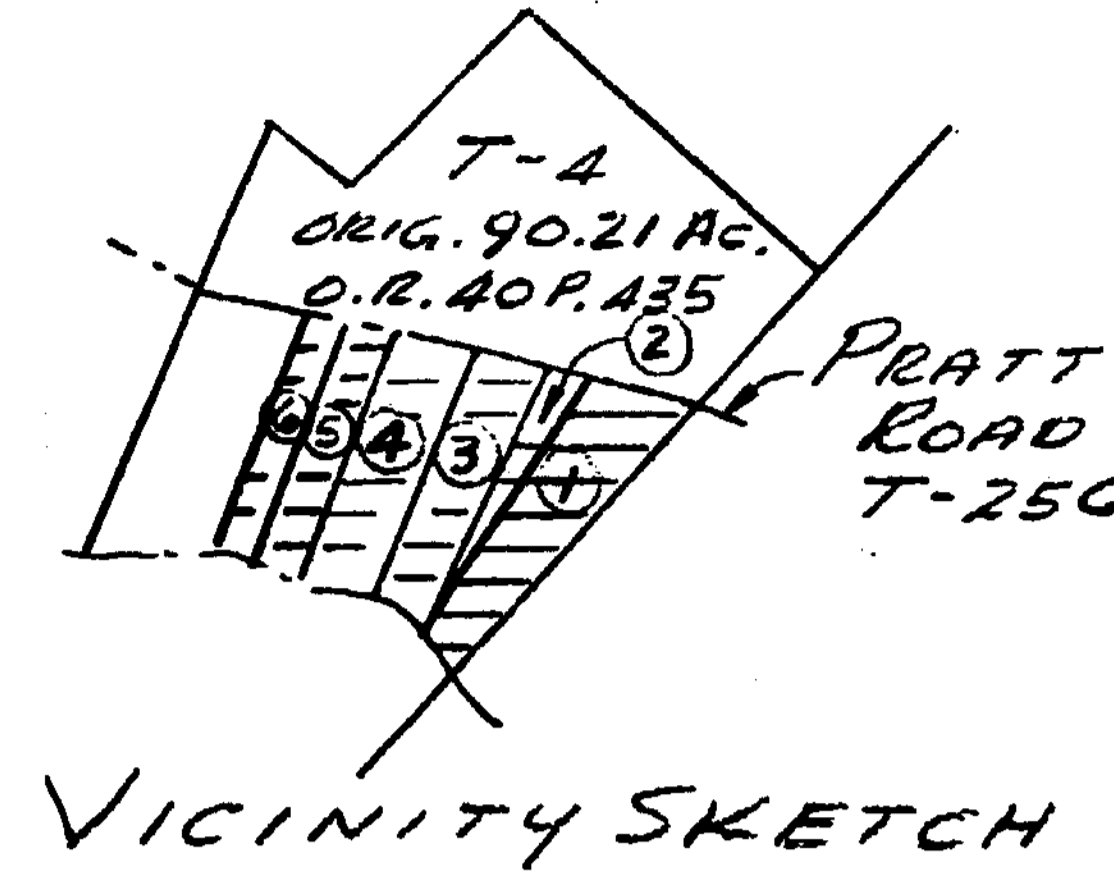
SCALE: 1"=200'

MILITARY SURVEY NO. 2029

TOWNSHIP - WASHINGTON

DEED REFERENCE

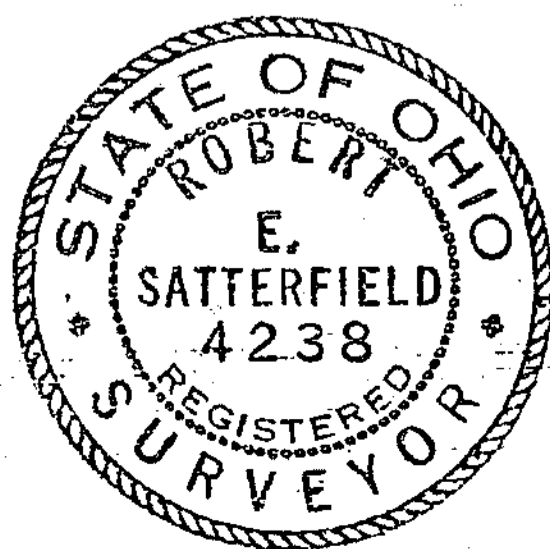
O. R. 40 PAGE 435



LEGEND

- ⊙ SPIKE SET
- ▽ 5/8" IRON PIN SET
- POINT IN CREEK
- x- FENCE

SURVEY BY
 SATTERFIELD & ASSOCIATES
Robert E. Satterfield
 ROBERT E. SATTERFIELD
 CIVIL ENGINEER & SURVEYOR
 WEST UNION, OHIO
 P. S. NO. 4238
 PHONE: 513-544-2833



APPROVED FOR
 MATHEMATICAL ACCURACY
 Clinton County Engineer
 Per William J. Temple, P.E.
 Approved by Engineer

ADDED TRACT NOS. 5 & 6 4-24-89
 ADDED TRACT NOS. 2, 3 & 4 2-10-89

SURVEY
 FOR
 HERBERT & HULDA FAYE
 PURVIS

MILITARY SURVEY NO. 2029
 WASHINGTON TOWNSHIP
 CLINTON COUNTY, OHIO
 SCALE 1"=200' OCTOBER, 1988