

**CLINTON COUNTY ENGINEERS
RECORD OF LAND DIVISION**

VOLUME 19 PLAT NO. 289
DATE 8-16-1988
SCALE 1" = 100'

DEED REFERENCE

VOLUME 232 PAGE 317
VOLUME 263 PAGE 479
TOWNSHIP ADAMS
MILITARY SURVEY NO. 2371

RECEIVED BY THE CLINTON COUNTY COMMISSIONERS ON July 11 1988.

CLERK Mary McKay

APPROVED ON July 11 1988.

David R. Stewart David Emmett Bailey

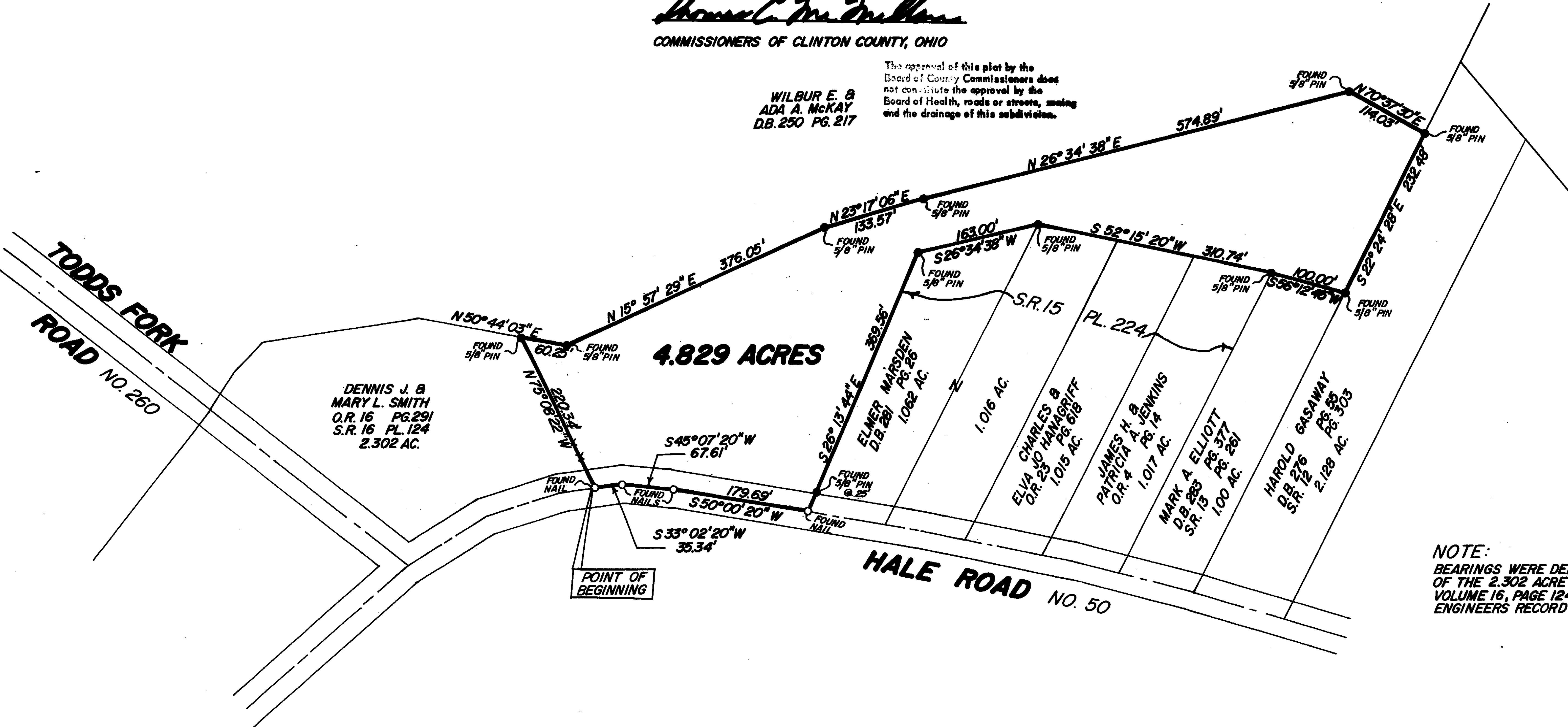
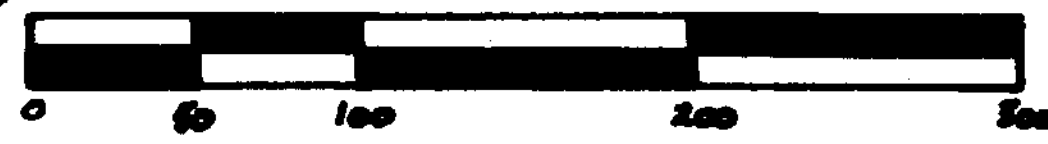
Thomas C. McMillan

COMMISSIONERS OF CLINTON COUNTY, OHIO

WILBUR E. &
ADA A. MCKAY
D.B. 250 PG. 217

The approval of this plat by the Board of County Commissioners does not constitute the approval by the Board of Health, roads or streets, zoning and the drainage of this subdivision.

1" = 100'



NOTE:
BEARINGS WERE DERIVED FROM THE SURVEY OF THE 2.302 ACRE TRACT AS RECORDED IN VOLUME 16, PAGE 124, OF THE CLINTON COUNTY ENGINEERS RECORD OF LAND DIVISION.

I HEREBY CERTIFY THIS TO BE A CORRECT PLAT OF A SURVEY MADE UNDER MY DIRECTION IN JULY, 1988.



Richard D. Roll
REGISTERED SURVEYOR NO. 4957

SURVEY PLAT OF
PART OF **HERBERT C. LAMB** LANDS
SITUATED IN
MILITARY SURVEY NO. 2371
ADAMS TOWNSHIP
CLINTON COUNTY, OHIO

APPROVED FOR
MATHEMATICAL ACCURACY
Clinton County Engineer
For Margaret Waters
AUG 16 1988

CLINGO
ENGINEERS ~ SURVEYORS
P.O. BOX 241

62 1/2 E. SUGARTREE ST. WILMINGTON, OHIO

SCALE 1" = 100'	DRAWN BY MSH	CHECKED BY RDR
DATE 7-6-88	ORIG. C-5328	