

RECEIVED BY THE CLINTON COUNTY COMMISSIONERS ON January 12 1987.

Nancy McKay
CLERK

APPROVED ON January 12 1987.

David R. Stewart Thomas C. Miller Daniel E. Bailey
Commissioners of Clinton County, Ohio

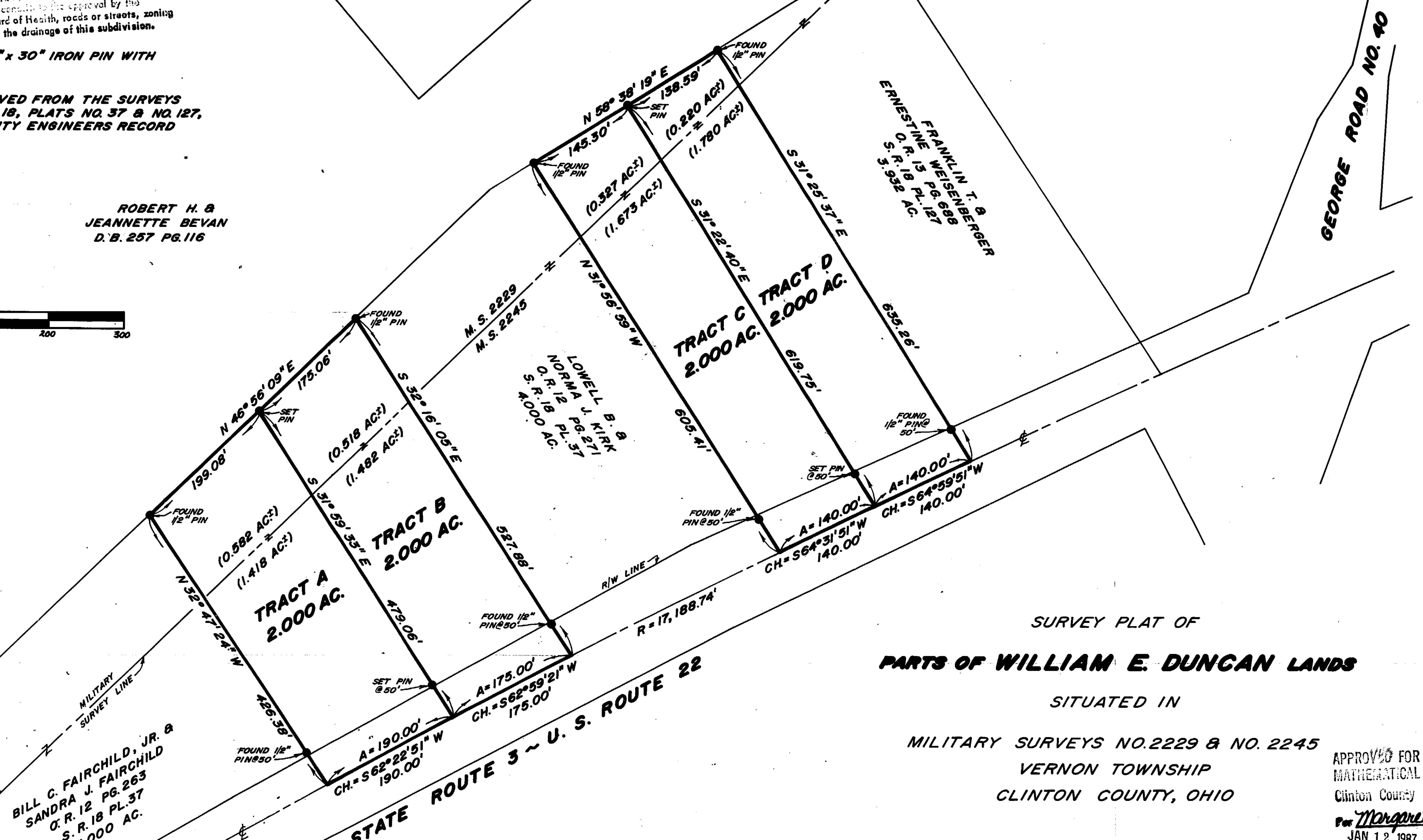
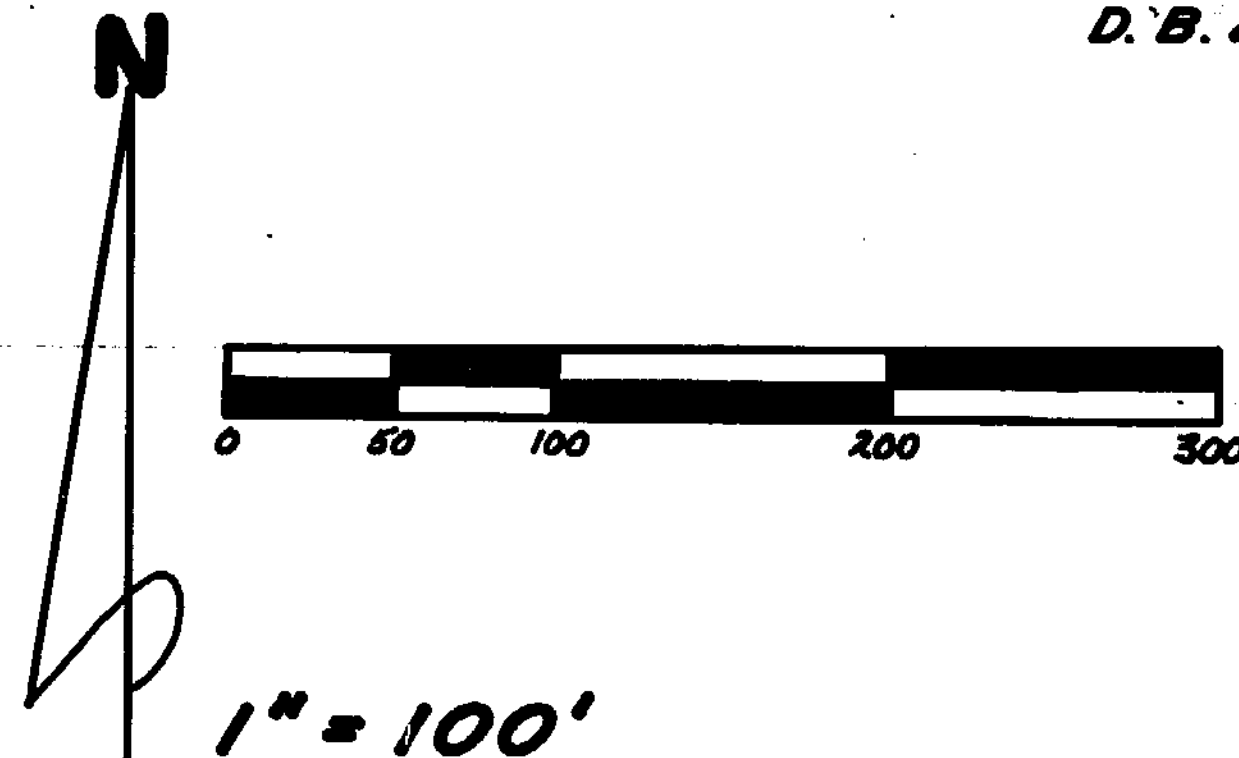
CLINTON COUNTY ENGINEERS
RECORD OF LAND DIVISION
VOLUME 19 PLAT NO. 279
DATE 07-29-1988
SCALE 1" = 100'
DEED REFERENCE 12 267
OFFICIAL RECORD 13 PAGE 482
TOWNSHIP VERNON
MILITARY SURVEY NO. 2229 &
NO. 2245

The approval of this plat by the Board of County Commissioners does not constitute approval by the Board of Health, roads or streets, zoning and the drainage of this subdivision.

NOTES:

- (1) "SET PIN" DENOTES 1/2" x 30" IRON PIN WITH PLASTIC CAP.
- (2) BEARINGS WERE DERIVED FROM THE SURVEYS RECORDED IN VOLUME 18, PLATS NO. 37 & NO. 127, OF THE CLINTON COUNTY ENGINEERS RECORD OF LAND DIVISION.

ROBERT H. & JEANNETTE BEVAN
D.B. 257 PG. 116



SURVEY PLAT OF
PARTS OF WILLIAM E. DUNCAN LANDS
SITUATED IN
MILITARY SURVEYS NO. 2229 & NO. 2245
VERNON TOWNSHIP
CLINTON COUNTY, OHIO

APPROVED FOR MATHEMATICAL ACCURACY
Clinton County Engineer
Margaret Watters
JAN 12 1987

I HEREBY CERTIFY THIS TO BE A CORRECT PLAT OF A SURVEY MADE UNDER MY DIRECTION IN JANUARY, 1987.

Richard D. Roll
REGISTERED SURVEYOR NO. 4957



CLINGO
ENGINEERS ~ SURVEYORS
P. O. BOX 241
62 1/2 E. SUGARTREE ST. WILMINGTON, OHIO

SCALE 1" = 100'	DRAWN BY CLY	CHECKED BY RDR
DATE JANUARY 5, 1987	DRWG. C-5016	