

VOLUME 19 PLAT NO. 149
CLINTON CO. ENGINEERS
RECORD OF LAND SURVEYS

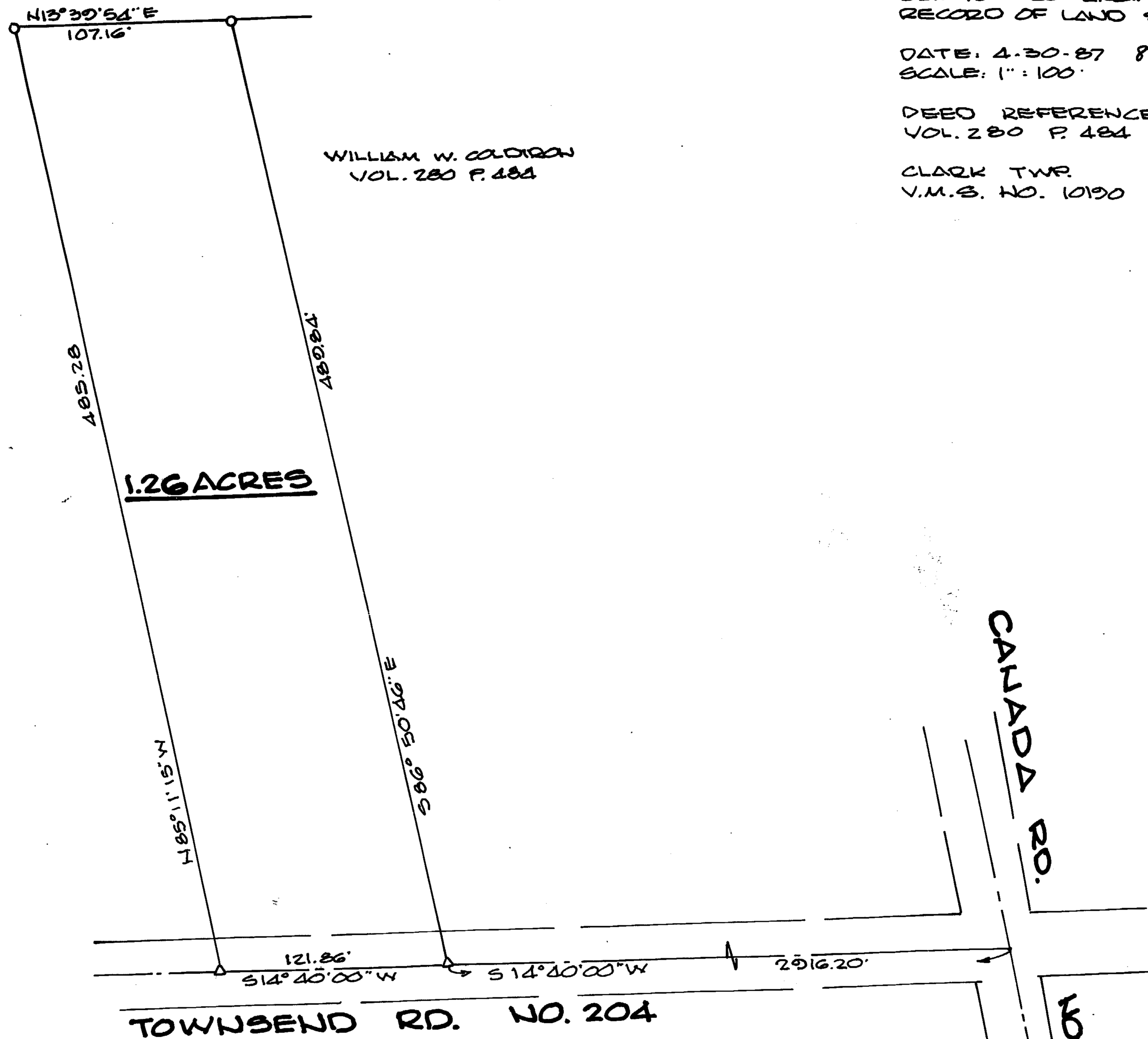
DATE: 4-30-87 8-24-1987
SCALE: 1" = 100'

DEED REFERENCE
VOL. 280 P. 484

CLARK TWP.
V.M.S. NO. 10190

MARJORIE HERTLEIN
VOL. 273 P. 299

WILLIAM W. COLDIRON
VOL. 280 P. 484



LEGEND
SPIKE SET
1/2\" IRON PIN SET

BEARINGS ARE BASED ON THE
RECORD (S14°40'00\" W) RECORDED
IN VOL. 249 P. 349.

BY: Charles M. Ryan
CHARLES M. RYAN

APPROVAL
CLINTON CO. COMMISSIONERS

David R. Stewart
David Emmett Bailey



The approval of this plat by the
Board of County Commissioners does
not constitute the approval by the
Board of Health, roads or streets, zoning
and the drainage of this subdivision.

APPROVED FOR
MATHEMATICAL ACCURACY
Clinton County Engineer
Per Melodie Kilderscraft
AUG 24 1987

SURVEY FOR
WILLIAM W. COLDIRON
CLARK TWP. CLINTON CO., O.
APRIL 30, 1987 V.M.S. 10190

BY: CHARLES M. RYAN
BOX 312 HILLSBORO, O.

0 100 200 300
SCALE: 1" = 100'