

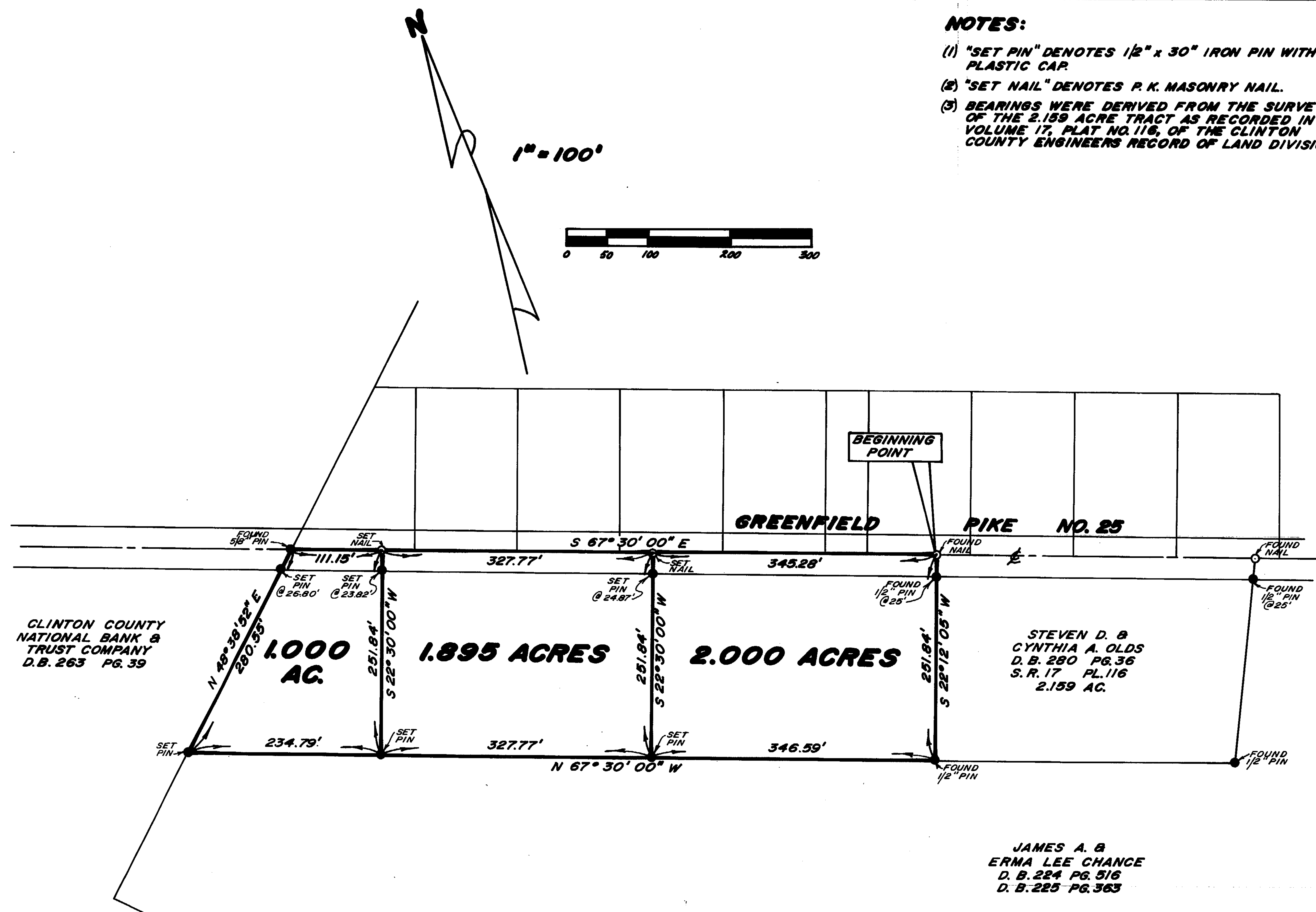
**CLINTON COUNTY ENGINEERS
RECORD OF LAND DIVISION**
VOLUME 19 PLAT NO. 12
DATE 11-20-1986
SCALE 1"=100'

DEED REFERENCE
 224 516
DEED BOOK 225 PAGE 363
TOWNSHIP RICHLAND
MILITARY SURVEY NO. 837

NOTES:

- (1) "SET PIN" DENOTES 1/2" x 30" IRON PIN WITH PLASTIC CAP.
- (2) "SET NAIL" DENOTES P. K. MASONRY NAIL.
- (3) BEARINGS WERE DERIVED FROM THE SURVEY OF THE 2.159 ACRE TRACT AS RECORDED IN VOLUME 17, PLAT NO. 116, OF THE CLINTON COUNTY ENGINEERS RECORD OF LAND DIVISION.

1" = 100'



CLINTON COUNTY
NATIONAL BANK &
TRUST COMPANY
D.B. 263 PG. 39

STEVEN D. &
CYNTHIA A. OLDS
D. B. 280 PG. 36
S. R. 17 PL. 116
2.159 AC.

JAMES A. &
ERMA LEE CHANCE
D. B. 224 PG. 516
D. B. 225 PG. 363

I HEREBY CERTIFY THIS TO BE A CORRECT PLAT
OF A SURVEY MADE UNDER MY DIRECTION IN OCTOBER, 1986.

Richard D. Roll
REGISTERED SURVEYOR NO. 4957



SURVEY PLAT OF
PARTS OF JAMES A. & ERMA LEE CHANCE LANDS
 SITUATED IN
 MILITARY SURVEY NO. 837
 RICHLAND TOWNSHIP
 CLINTON COUNTY, OHIO

RECEIVED BY THE CLINTON COUNTY COMMISSIONERS ON November 3 1986.

Randy McKay
CLERK

APPROVED ON November 3 1986.

David R. Stewart *Thomas C. McMillan* *David E. Bailey*
 Commissioners of Clinton County, Ohio

The approval of this plat by the Board of County Commissioners does not constitute the approval by the Board of Health, roads or streets, zoning and the drainage of this subdivision.

APPROVED FOR
 MATHEMATICAL ACCURACY
 Clinton County Engineer
 Per *Marianne Winters*
 NOV 3 1986

CLINCO
 ENGINEERS - SURVEYORS
 P. O. BOX 241
 62 1/2 E. SUGARTREE ST. WILMINGTON, OHIO

SCALE 1" = 100'	DRAWN BY CLY	CHECKED BY RDR
DATE OCTOBER 27, 1986		DRWG. C-4975