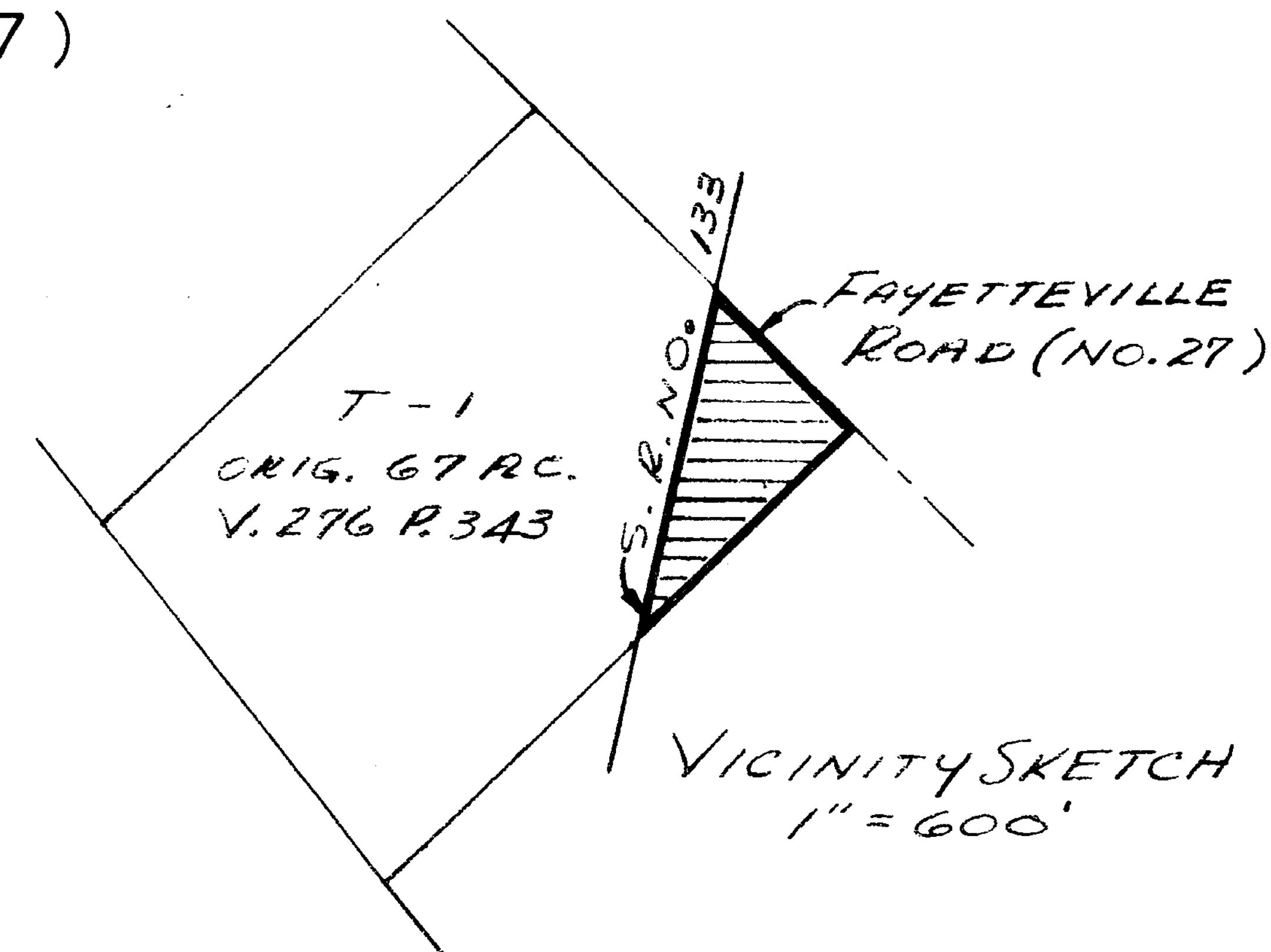
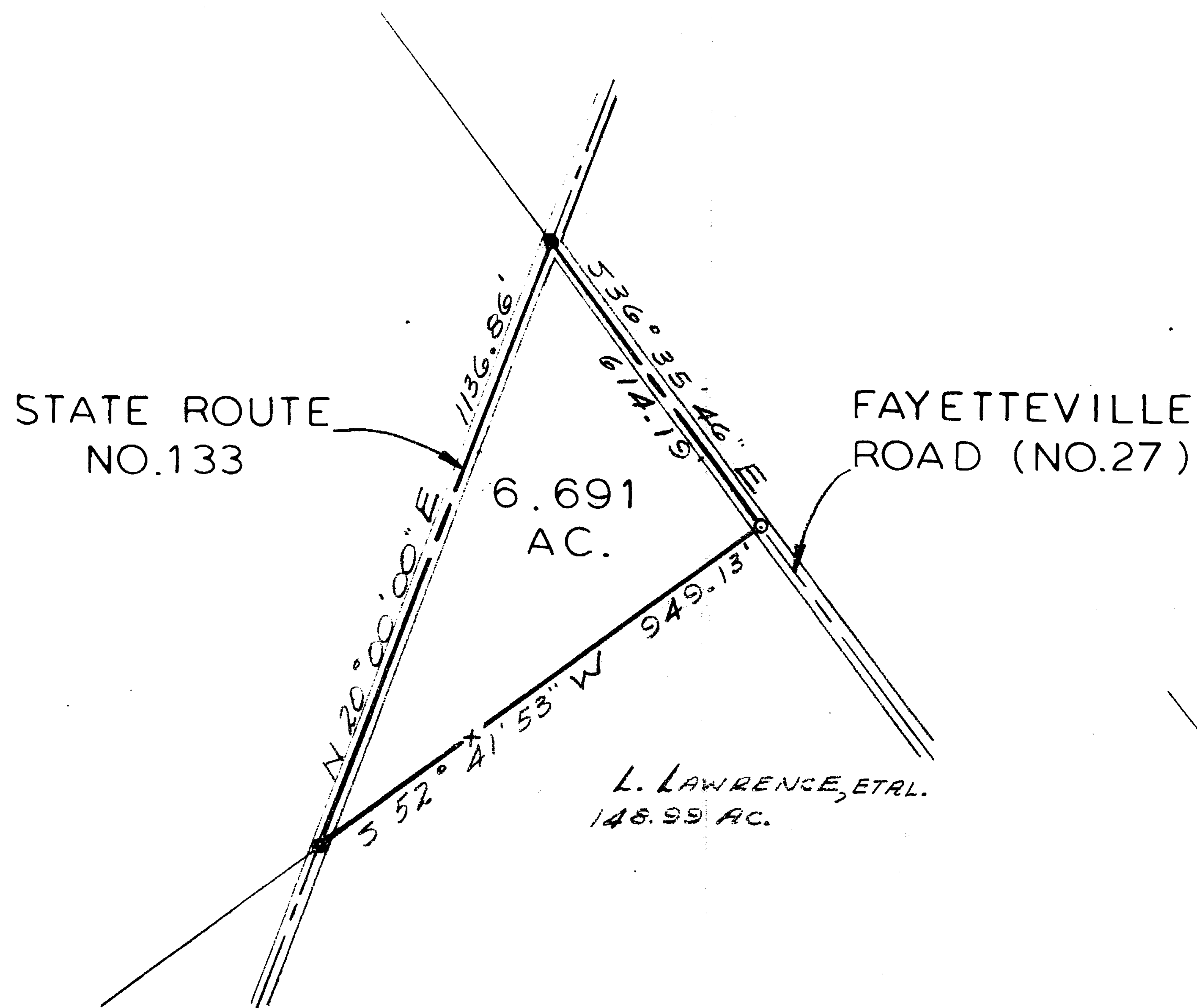


BEARINGS ARE MAGNETIC
AND BASED UPON THE
N 20° 00' 00" E LINE.

0 200 400
SCALE: 1"=200'

VOLUME 18 PART NO. 27
CLINTON COUNTY ENGINEERS
RECORD OF LAND DIVISION
DATE: MAY 13, 1985
SCALE: 1"=200'
TOWNSHIP MARION
MILITARY SURVEY NO. 9009

DEED REFERENCE
DEED BOOK 276 PAGE 343



LEGEND

- SPIKE FOUND
- SPIKE SET
- ▽ 5/8" IRON PIN SET
- x — FENCE

SURVEY BY
SATTERFIELD & ASSOCIATES

Robert E. Satterfield
ROBERT E. SATTERFIELD
CIVIL ENGINEER & SURVEYOR
WEST UNION, OHIO
P. S. NO. 4238



APPROVED FOR
MATHEMATICAL ACCURACY
Clinton County Engineer
Per *Melba Lee Niederkorn*
MAY 20 1985

SURVEY
FOR
HAROLD DEAN CARNAHAN, ETAL.

MILITARY SURVEY NO. 9009
MARION TOWNSHIP
CLINTON COUNTY, OHIO
SCALE 1"=200' MAY, 1985