

I HEREBY CERTIFY THIS TO BE A CORRECT PLAT OF A SURVEY MADE UNDER MY DIRECTION IN FEBRUARY, 1986.

Richard D. Roll  
REGISTERED SURVEYOR No. 4957

CLINTON COUNTY ENGINEERS  
RECORD OF LAND DIVISION

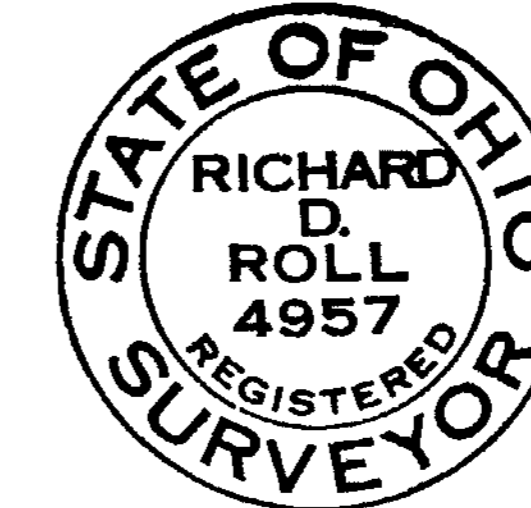
VOLUME 18 PLAT NO. 179

DATE 5-7-86

SCALE 1" = 80'

DEED REFERENCE

OFFICIAL RECORD 3 PAGE 679  
TOWNSHIP Union - City of Wilmington  
MILITARY SURVEY NO. 2690



NOTES:

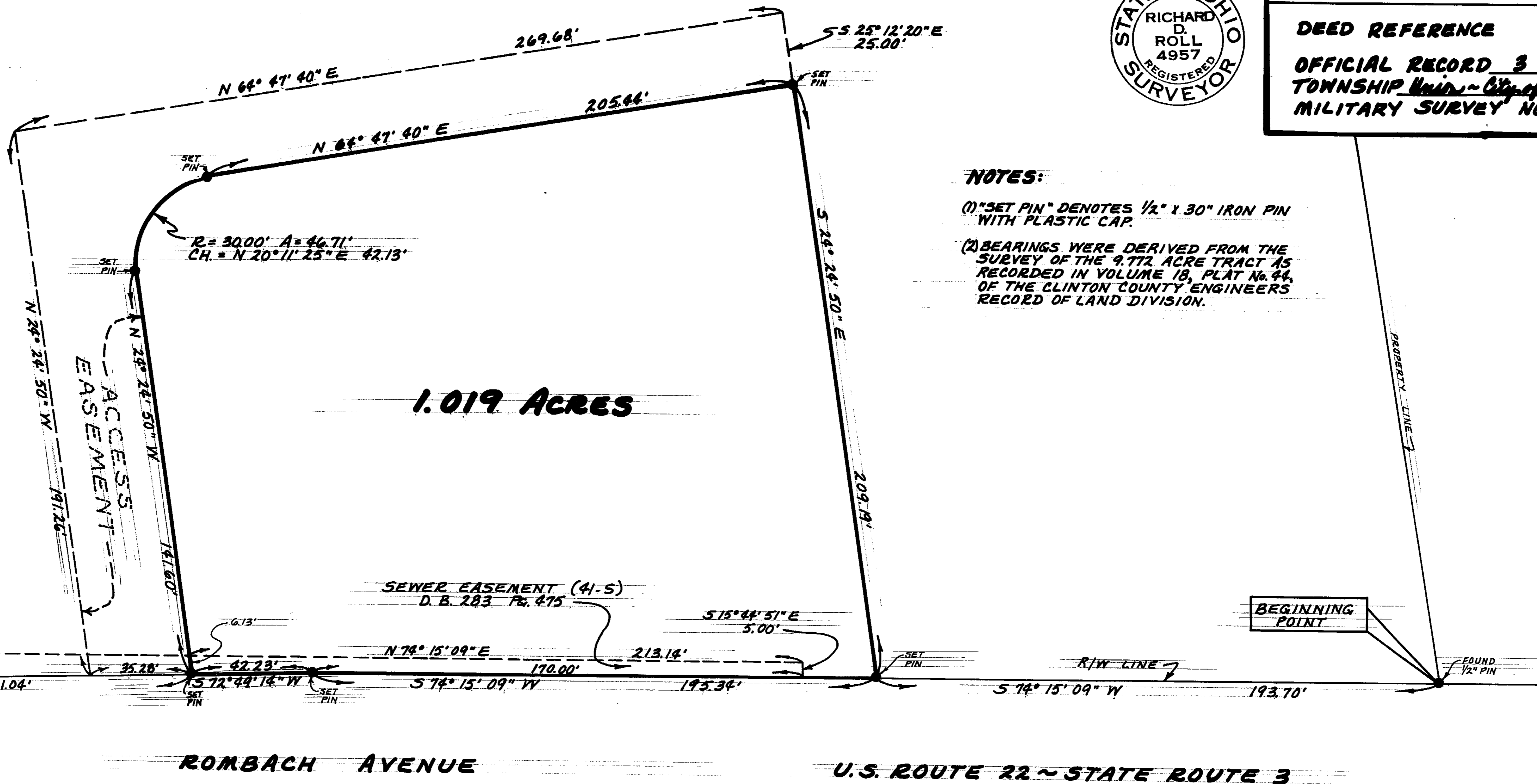
(1) "SET PIN" DENOTES 1/2" x 30" IRON PIN WITH PLASTIC CAP.

(2) BEARINGS WERE DERIVED FROM THE SURVEY OF THE 9.772 ACRE TRACT AS RECORDED IN VOLUME 18, PLAT No. 44, OF THE CLINTON COUNTY ENGINEERS RECORD OF LAND DIVISION.

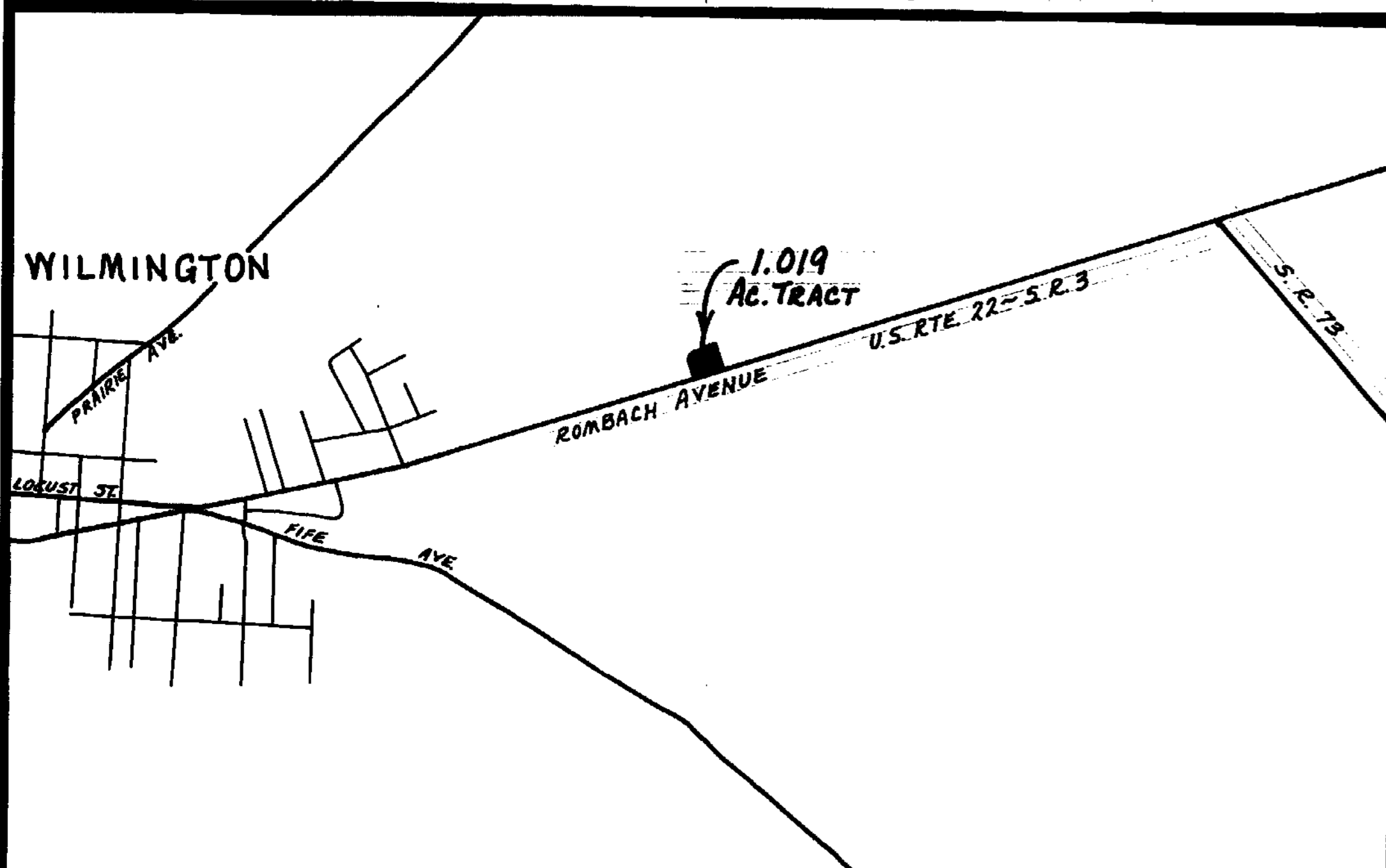
ROMBACH PROPERTIES  
D. B. 3 P. 679  
S. R. 18 P. 44  
(9.772 Ac.)



1" = 30'



VICINITY SKETCH



SURVEY PLAT OF  
PART OF ROMBACH PROPERTIES LANDS

SITUATED IN

MILITARY SURVEY No. 2690  
CITY OF WILMINGTON  
UNION TOWNSHIP  
CLINTON COUNTY, OHIO  
FOR

GOLDEN CORRAL CORPORATION

APPROVED FOR  
MATHEMATICAL ACCURACY  
Clinton County Engineer  
Per *Melodus Widenbrant*

MAR 14 1986

REVISED 3-13-86 ACCESS EASEMENT ADDED

RECEIVED BY THE WILMINGTON CITY PLANNING COMMISSION ON  
MARCH 25 1986

*Bonnie MacDonald*  
SECRETARY

APPROVED ON MARCH 25 1986

*John J. Smith*  
CHAIRMAN

*Bonnie MacDonald*  
SECRETARY

CLINCO

ENGINEERS ~ SURVEYORS  
P. O. Box 241

62 1/2 E. SUGARTREE ST. WILMINGTON, OHIO

SCALE 1" = 30' DRAWN BY CLY CHECKED BY RDR

DATE February 7, 1986 DRAW. C-4829