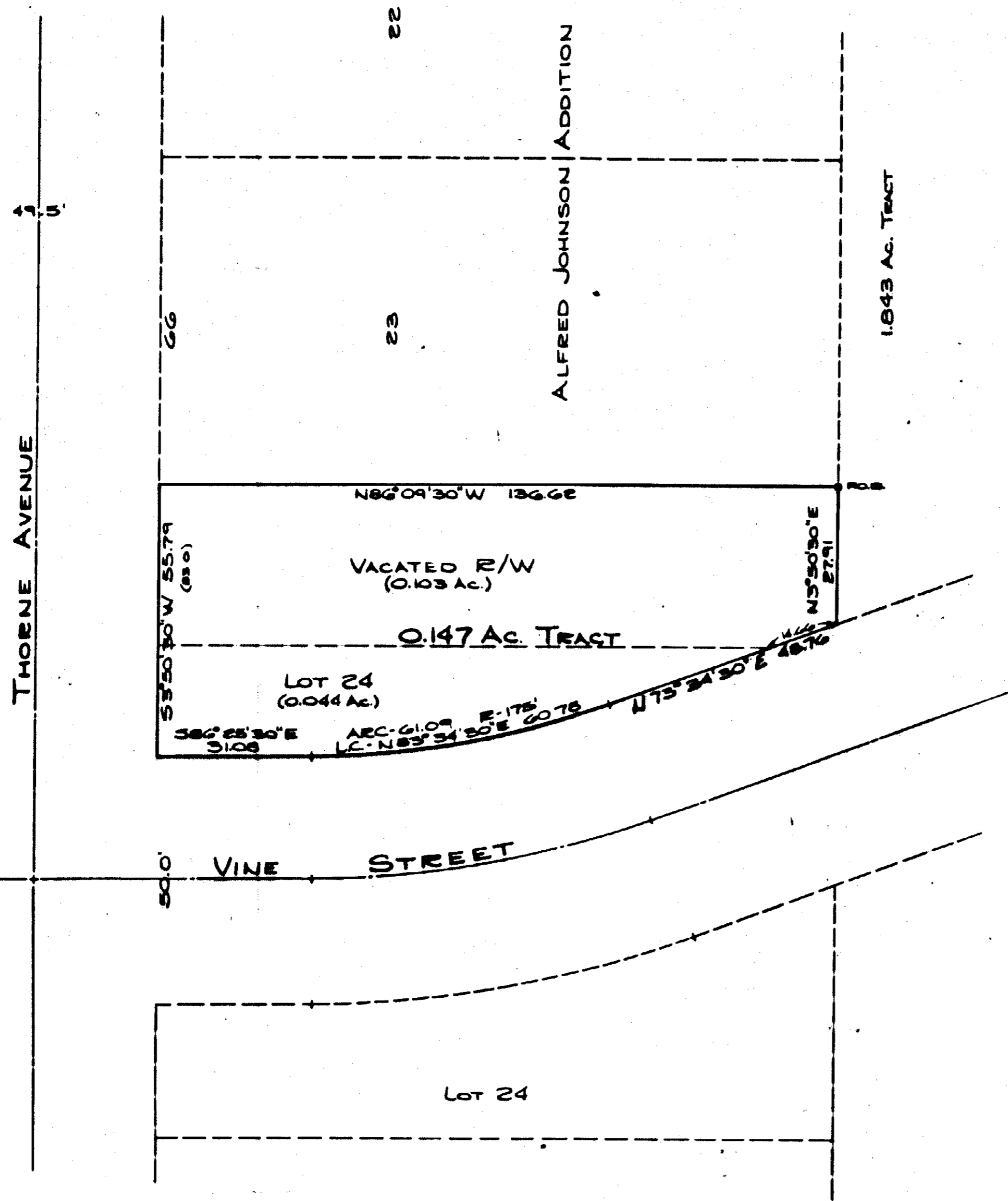


DEED REFERENCE
 DEED BOOK _____ PAGE _____
 CITY OF WILMINGTON
 UNION TWR M.S. 1057



SURVEY PLAT OF
 ADDITION TO LOT 23 - ALFRED JOHNSON ADDITION

CERTIFICATION

I CERTIFY THAT THIS IS A MAP OF A TRUE AND COMPLETE SURVEY MADE IN CONJUNCTION WITH THE STREET DEDICATIONS FOR THE CITY OF WILMINGTON IN AUGUST 1985.

Michael L. Smith
 MICHAEL L. SMITH - KLINE ENGINEERING
 XENIA, OHIO
 REG. SURVEYOR - OHIO 6890



APPROVED FOR
 MATHEMATICAL ACCURACY
 Clinton County Engineer
 Per *Ricky Stewart*
 MAR 25 1985

APPROVAL:
 APPROVAL IS MADE BY THE PLANNING COMMISSION OF THE CITY OF WILMINGTON, OHIO
 THIS THE 25th DAY OF January 1985.

Cyril R. Eichel
 CHIEF, PLANNING COMMISSION

Bonnie McDonald
 SECRETARY

KLINE ENGINEERING
 83 SPRING ST.
 XENIA, OH 45385

SCALE: 1"=20'	DRAWN BY: E.F.W.	CHECKED BY: M.L.S.
DATE: JANUARY 10, 1985		