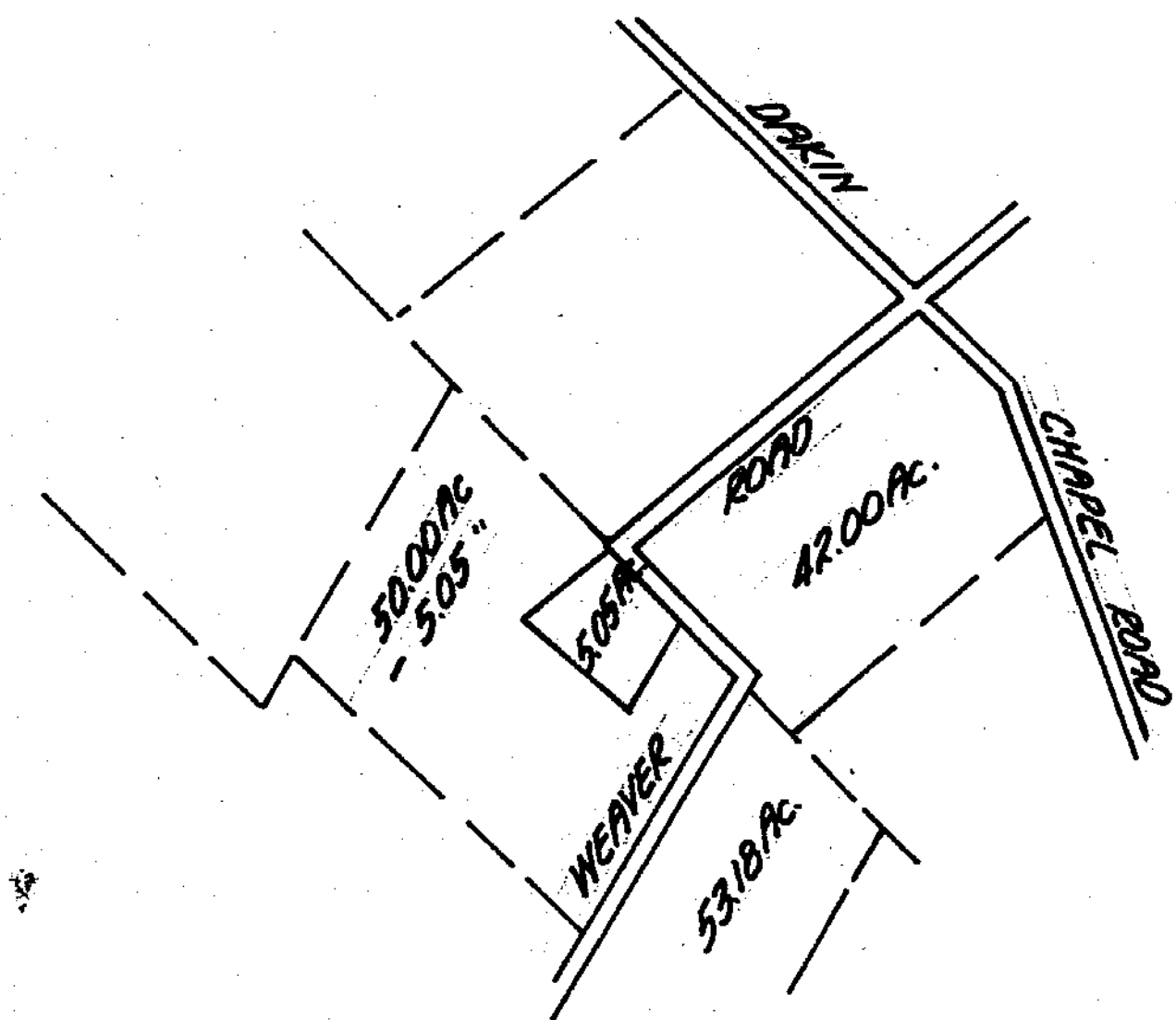
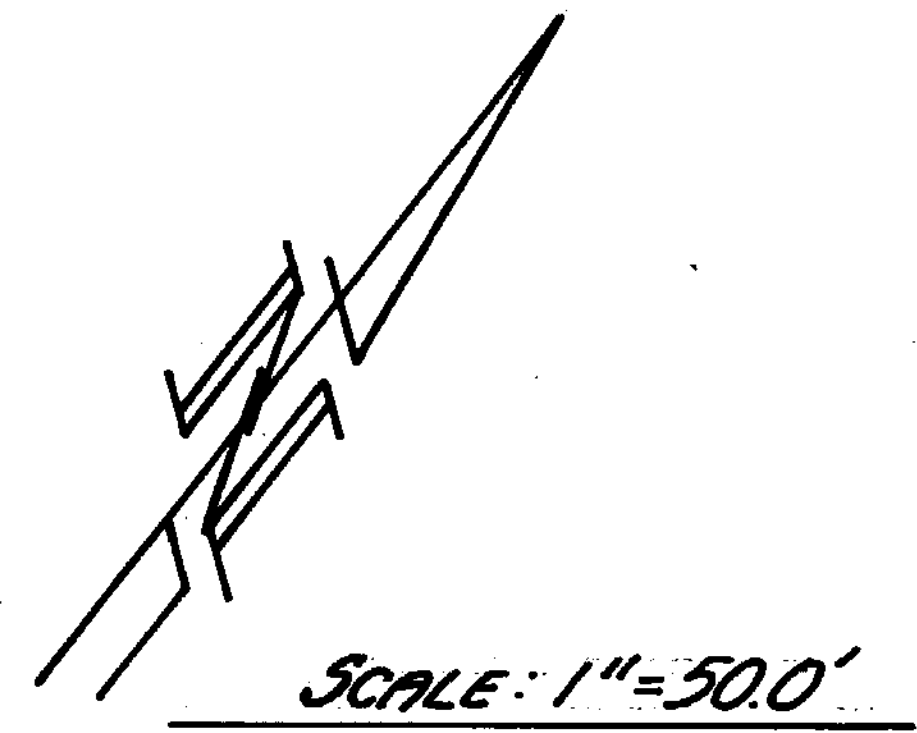


WILLIAM & HAZEL BEARD  
 VOL. 187 Pg. 116  
 50.00 AC.  
 - 5.05 "

PLAT OF 5.05 AC.  
 WILSON TWP. CLINTON CO., OHIO  
 M.S. # 749 SEPT. 81

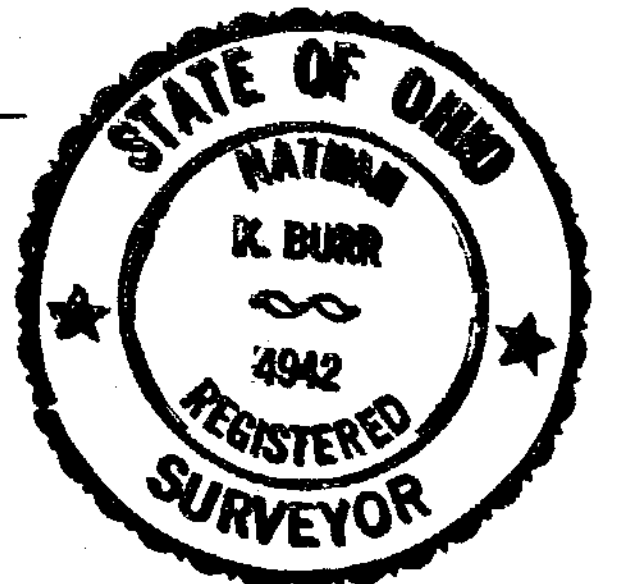


G.R. & M.E. GRAY  
 42.00 AC.

CERTIFICATION:  
 I hereby certify that distances are  
 correct and monuments set as shown.

*Nathan K. Burr*  
 NATHAN K. BURR REG. SURVEYOR #1942

APPROVED FOR ACCURACY  
 Clinton County Engineer  
 Per *Becky Stewart*  
 NOV 2 1982



WEAVER RD. 173  
 F. & G. WOLFE 53.18 AC.