

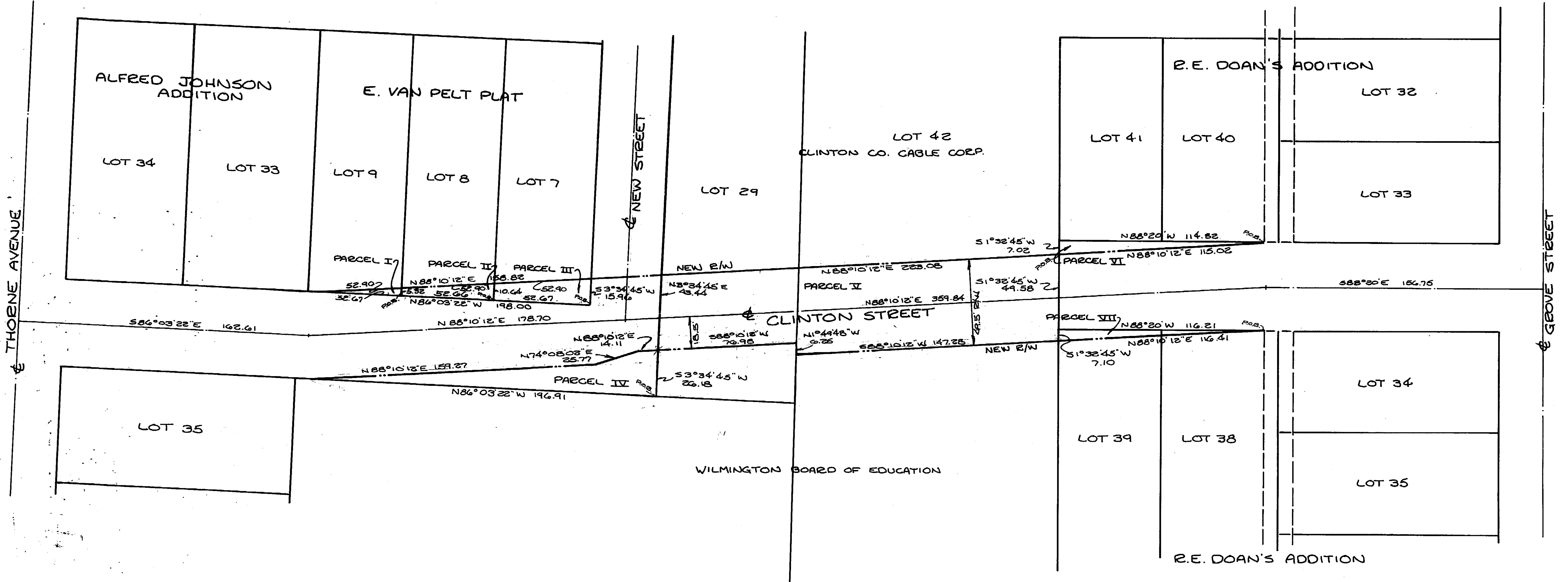
CLINTON STREET - DEDICATION AND VACATION

UNION TWP. - WILMINGTON CITY M.S.1057

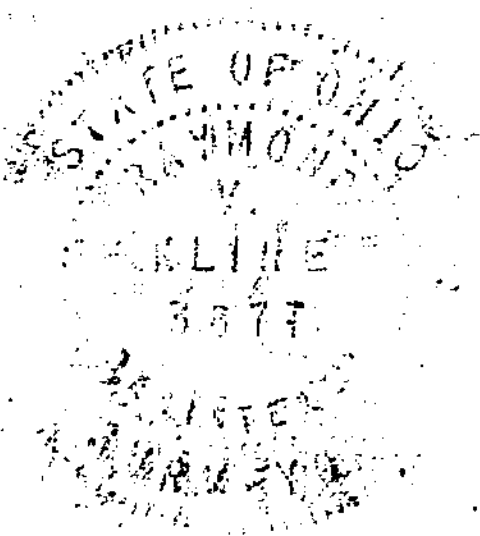
DEDICATION	
PARCEL I	- 0.003 Ac.
PARCEL II	- 0.010 Ac.
PARCEL III	- 0.016 Ac.
PARCEL V	- 0.243 Ac.
PARCEL VII	- 0.009 Ac.

VACATION	
PARCEL IV	- 0.049 Ac.
PARCEL VI	- 0.009 Ac.

SCALE: 1"=40'-0"



Raymond V. Kline AUG. 26, 1977
 RAYMOND V. KLINE
 KLINE ENGINEERING
 XENIA, OHIO
 REG. SURVEYOR, OHIO #3877



APPROVED FOR ACCURACY
 Clinton County Engineer
 Per *Bobby Stewart*
 OCT 26 1982