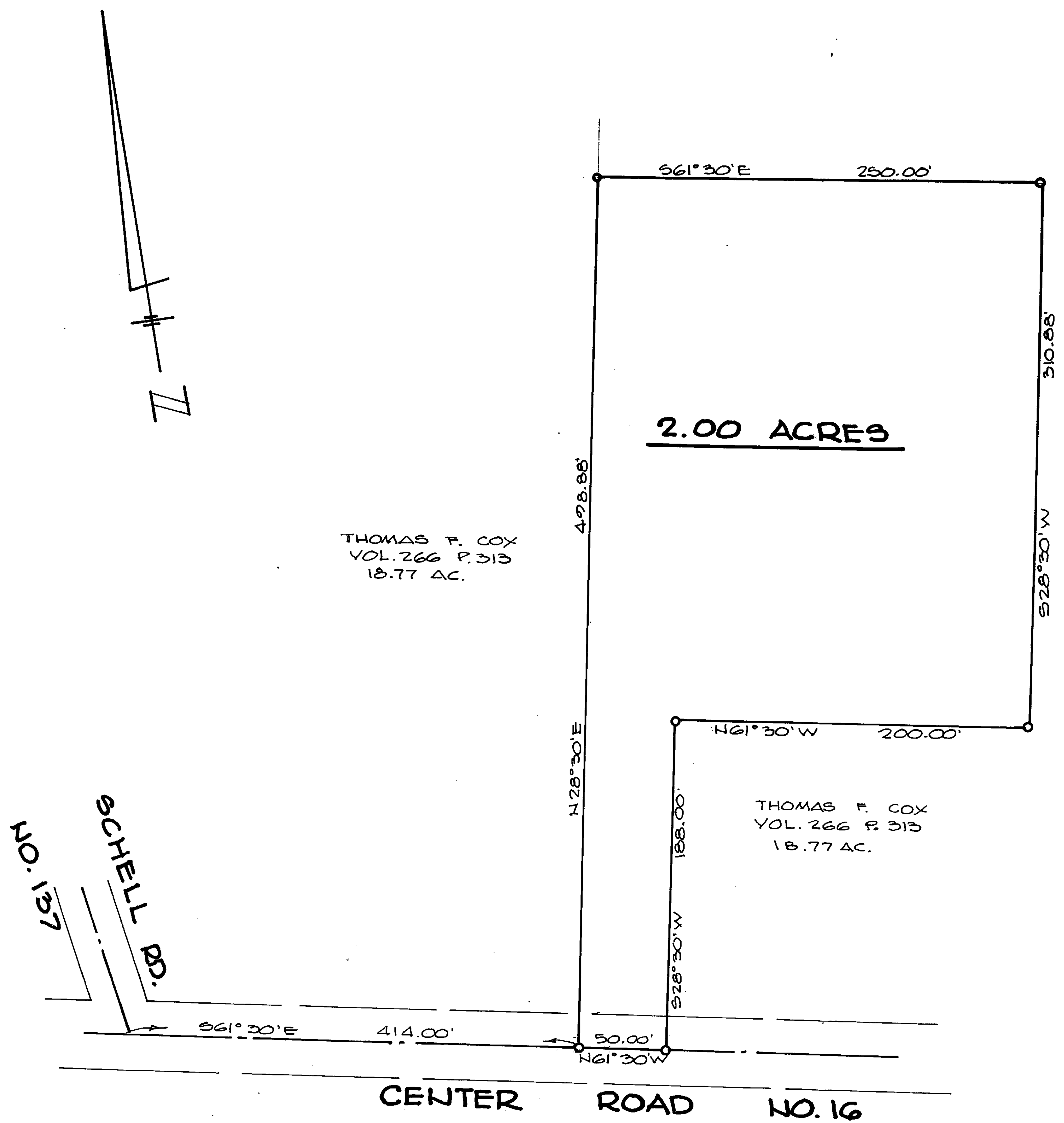


PLAT NO. 17 VOLUME 199
 CLINTON CO. ENGINEERS
 RECORD OF LAND DIVISION

DATE 6-19-84
 SCALE 1" = 50'

DEED REFERENCE
 VOL. 266 P. 313

TOWNSHIP CHESTER
 V.M.S. NO. 15240



THOMAS F. COX
 VOL. 266 P. 313
 18.77 AC.

2.00 ACRES

THOMAS F. COX
 VOL. 266 P. 313
 18.77 AC.

CENTER ROAD NO. 16

APPROVED FOR
 MATHEMATICAL ACCURACY
 Clinton County Engineer
 Per *M. D. ...*
 JUN 26 1984

BY: *Charles M. Ryan*
 CHARLES M. RYAN

APPROVED BY
 CLINTON COUNTY COMMISSIONERS

6-28-84 *Daniel E Bailey*
 6/28/84 *L. ...*
 6-28-84 *D M F.*

The approval of this plat by the Board of County Commissioners does not constitute the approval by the Board of Health, roads or streets, zoning and the drainage of this subdivision.

PROPERTY OF
THOMAS F. COX
 CHESTER TWP CLINTON CO., O.
 JUNE 19, 1984 V.M.S. NO. 15240

BY: CHARLES M. RYAN
 P.O. BOX 312
 HILLSBORO, O.

