

RECEIVED BY THE CLINTON COUNTY COMMISSIONERS ON August 26 1982

Nancy Island
CLERK

APPROVED ON 8-26 1982

Harold N. Uvri

D M F.P.

Daniel E. Bailey

COMMISSIONERS OF CLINTON COUNTY, OHIO

CLINTON COUNTY ENGINEERS
RECORD OF LAND DIVISION

VOLUME 17 PLAT NO. 19

DATE 8-12-82

SCALE 1"=100'

DEED REFERENCE

DEED BOOK 239 PAGE 200

TOWNSHIP Union

MILITARY SURVEY NO. 1162

The approval of this plat by the Board of County Commissioners does not constitute the approval by the Board of Health, roads or streets, zoning and the drainage of this subdivision.

I HEREBY CERTIFY THIS TO BE A CORRECT PLAT OF A SURVEY MADE UNDER MY DIRECTION IN AUGUST, 1982.

Richard D. Roll
REGISTERED SURVEYOR No. 4957



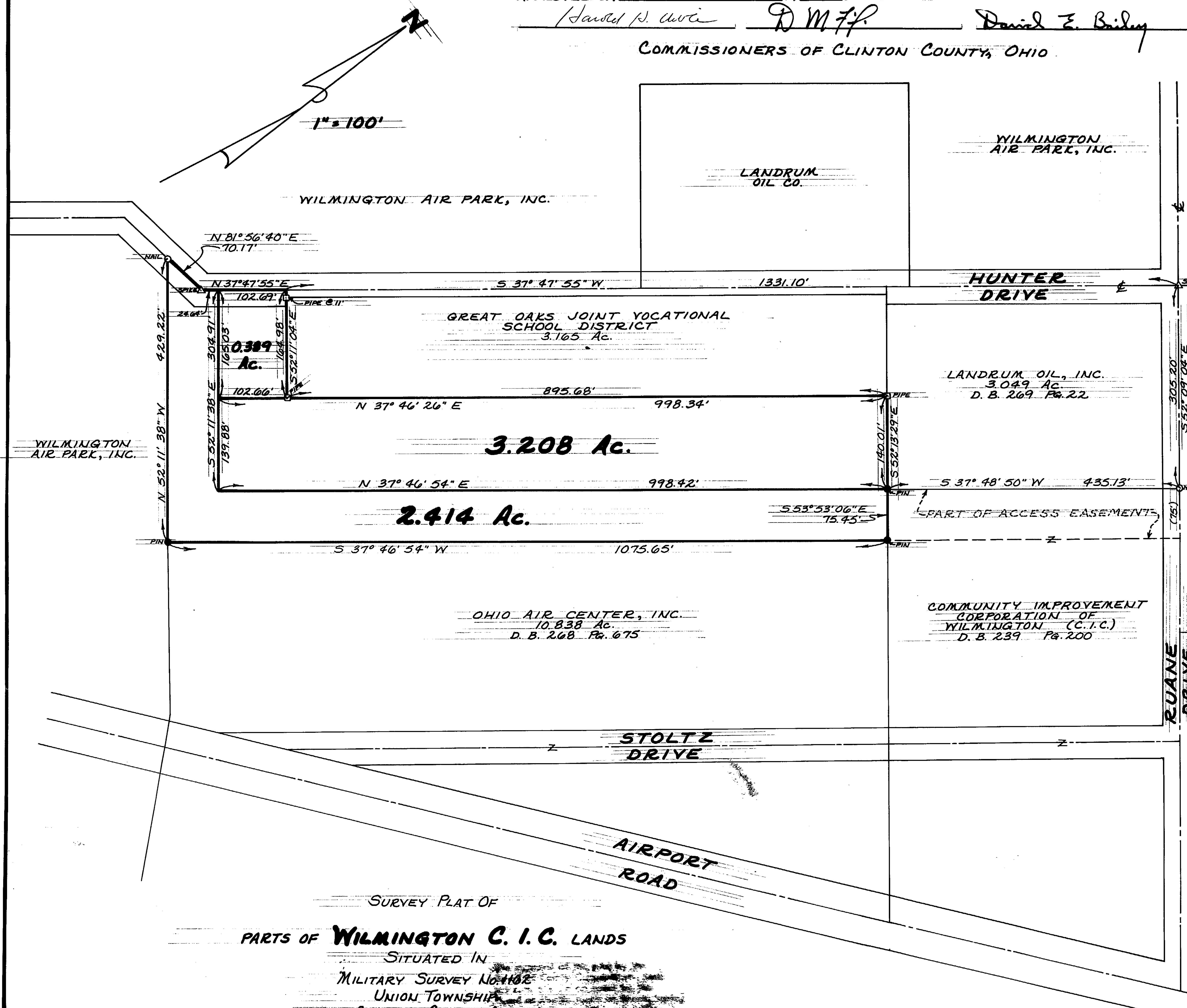
APPROVED FOR ACCURACY
Clinton County Engineer
Per William Wildenbrand
AUG-2-4 1982

CLINCO

ENGINEERS-SURVEYORS
P. O. Box 241

62 1/2 E. SUGARTREE ST. WILMINGTON, OHIO

SCALE 1"=100' DRAWN BY CLY CHECKED BY RDR
DATE August 12, 1982 DRWG. C-4331



SURVEY PLAT OF
PARTS OF **WILMINGTON C. I. C. LANDS**
SITUATED IN
MILITARY SURVEY NO. 1162
UNION TOWNSHIP
CLINTON COUNTY, OHIO