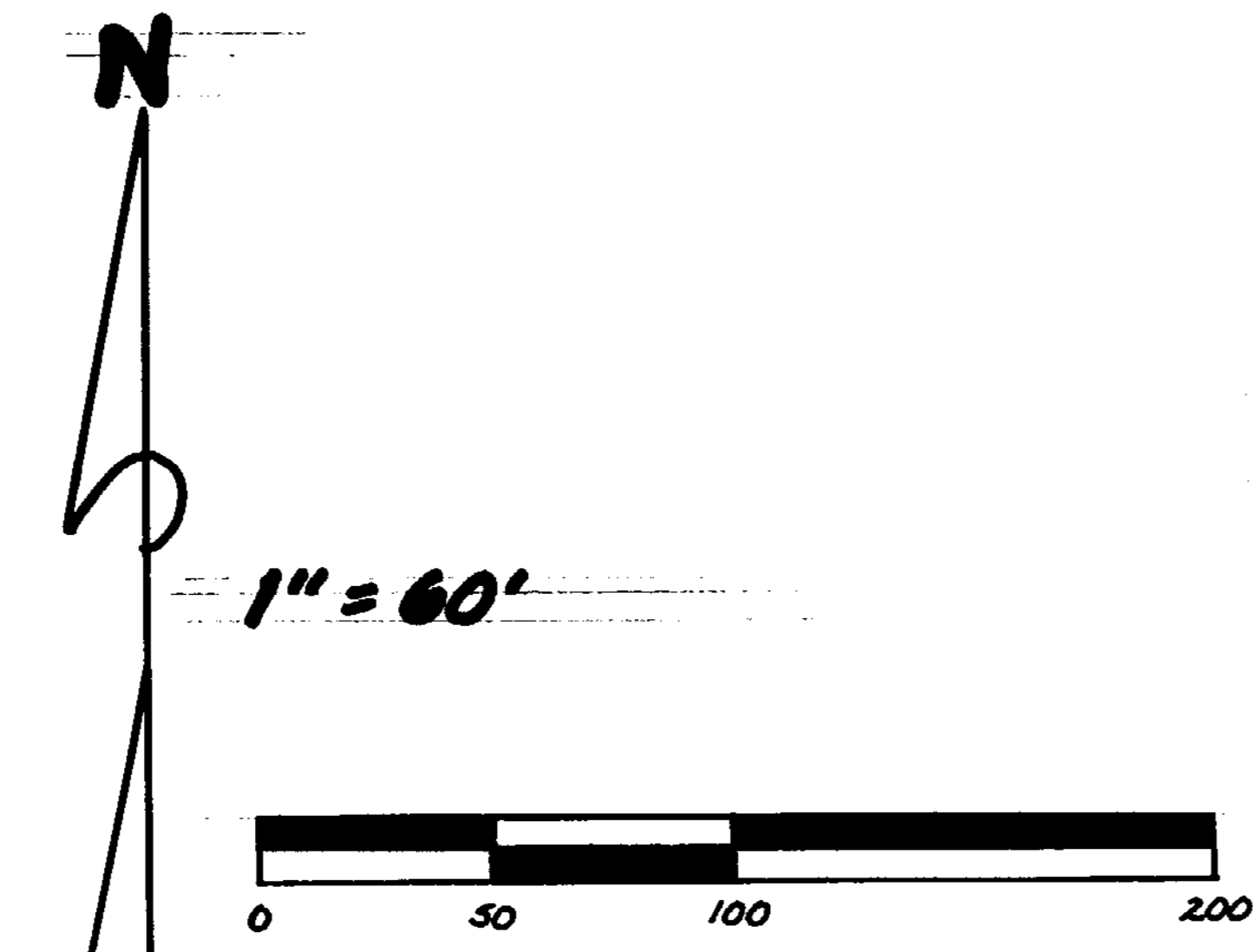


CLINTON COUNTY ENGINEERS
 RECORD OF LAND DIVISION
 VOLUME 17 PLAT NO. 179
 DATE 4-2-84
 SCALE 1" = 60'

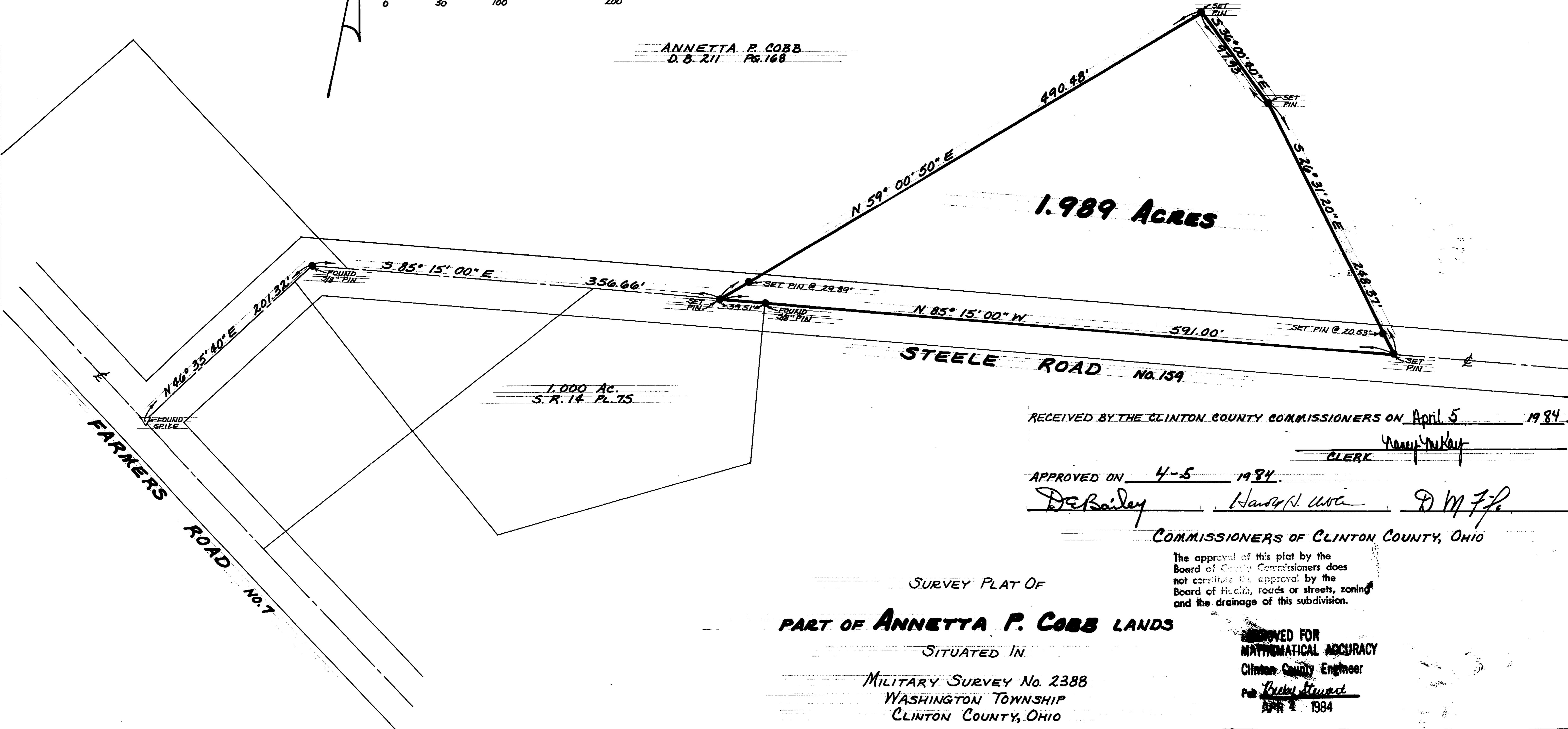
DEED REFERENCE
 DEED BOOK 211 PAGE 168
 TOWNSHIP Washington
 MILITARY SURVEY NO. 2388

NOTES:

- (1) "SET PIN" DENOTES 1/2" x 30" IRON PIN WITH PLASTIC CAP.
- (2) BEARING REFERENCE: BEARINGS WERE DERIVED FROM THE SURVEY OF THE 1,000 ACRE TRACT AS RECORDED IN VOLUME 15, PLAT No. 75, OF THE CLINTON COUNTY ENGINEERS RECORD OF LAND DIVISION.



ANNETTA P. COBB
 D. B. 211 Pg. 168



RECEIVED BY THE CLINTON COUNTY COMMISSIONERS ON April 5 1984.

CLERK Nancy Yerkoff

APPROVED ON 4-5 1984.

DeBailey Harold N. Urie D M Fife

COMMISSIONERS OF CLINTON COUNTY, OHIO

The approval of this plat by the Board of County Commissioners does not constitute the approval by the Board of Health, roads or streets, zoning and the drainage of this subdivision.

SURVEY PLAT OF
PART OF ANNETTA P. COBB LANDS

SITUATED IN
 MILITARY SURVEY No. 2388
 WASHINGTON TOWNSHIP
 CLINTON COUNTY, OHIO

APPROVED FOR
 MATHEMATICAL ACCURACY
 Clinton County Engineer
 P. O. Clay Stewart
 APR 2 1984

I HEREBY CERTIFY THIS TO BE A CORRECT PLAT OF A SURVEY MADE UNDER MY DIRECTION IN APRIL, 1984.

Richard D. Roll
 REGISTERED SURVEYOR No. 4957



CLINCO
 ENGINEERS & SURVEYORS
 P. O. Box 241
 62 1/2 E. SUGARTREE ST. WILMINGTON, OHIO

SCALE	1" = 60'	DRAWN BY	CLY	CHECKED BY	RDR
DATE	April 2, 1984	DRWG.	C-4532		