

RECEIVED BY THE CLINTON COUNTY COMMISSIONERS ON October 14 1982

The approval of this plat by the Board of County Commissioners does not constitute the approval by the Board of Health, roads or streets, zoning and the drainage of this subdivision.

Norman Island
CLERK

APPROVED ON 10-14 1982

Hansel Kline DM 7 Daniel E. Bailey

COMMISSIONERS OF CLINTON COUNTY, OHIO

CLINTON COUNTY ENGINEERS
RECORD OF LAND DIVISION

VOLUME 17 PLAT NO. 13

DATE 9-23-82

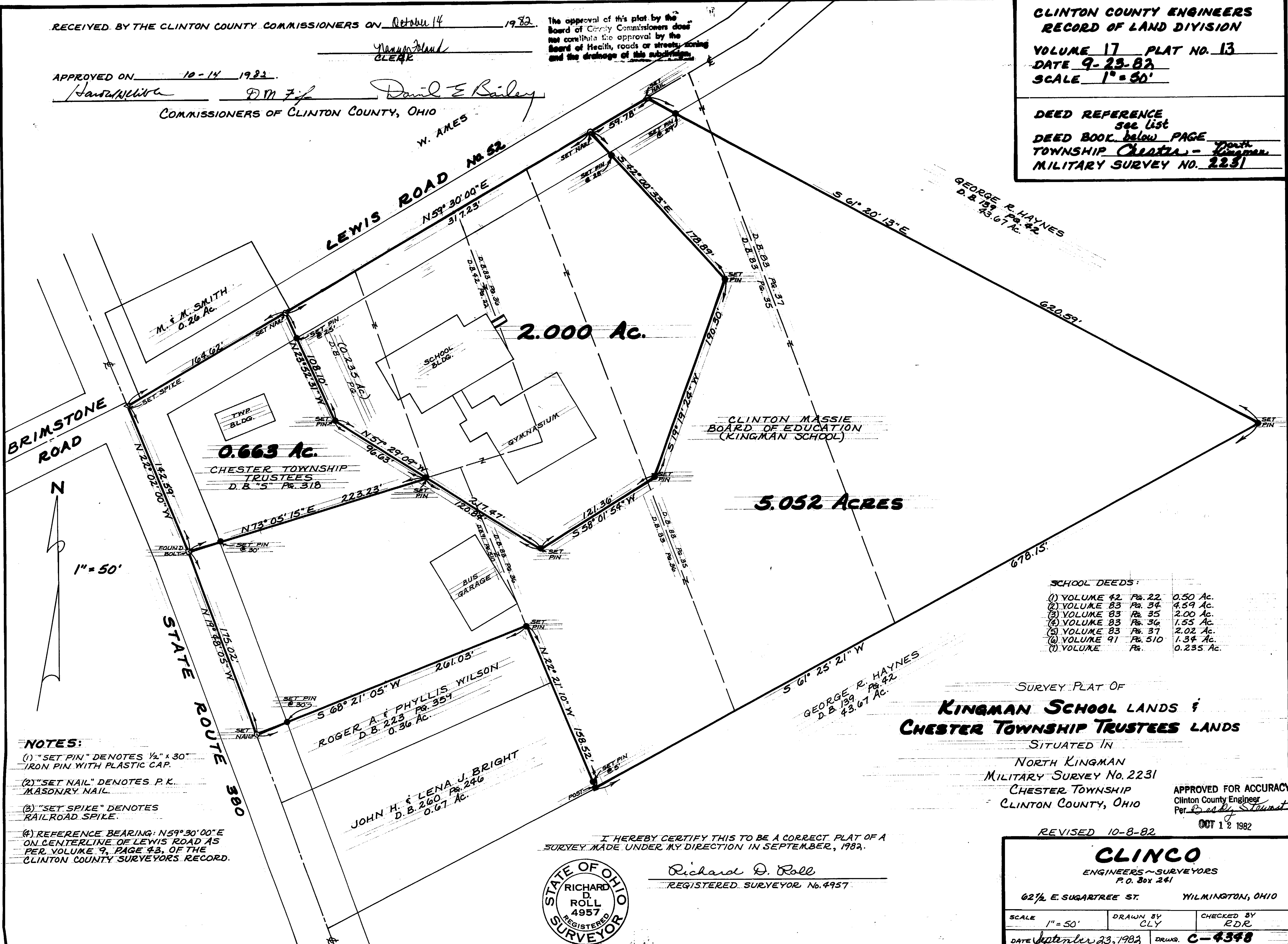
SCALE 1" = 50'

DEED REFERENCE
see list

DEED BOOK below PAGE

TOWNSHIP Chester - North Kingman

MILITARY SURVEY NO. 2231



BRIMSTONE ROAD

LEWIS ROAD No. 52

M. & M. SMITH
0.26 Ac.

0.663 Ac.

2.000 Ac.

5.052 ACRES

CHESTER TOWNSHIP TRUSTEES
D. B. "5" Pg. 318

CLINTON MASSIE BOARD OF EDUCATION
(KINGMAN SCHOOL)

ROGER A. & PHYLLIS WILSON
D. B. 223 Pg. 357
0.36 Ac.

JOHN H. & LENA J. BRIGHT
D. B. 260 Pg. 246
0.67 Ac.

GEORGE R. HAYNES
D. B. 139 Pg. 42
43.67 Ac.

SCHOOL DEEDS:

(1) VOLUME 42 Pg. 22	0.50 Ac.
(2) VOLUME 83 Pg. 34	4.59 Ac.
(3) VOLUME 83 Pg. 35	2.00 Ac.
(4) VOLUME 83 Pg. 36	1.55 Ac.
(5) VOLUME 83 Pg. 37	2.02 Ac.
(6) VOLUME 91 Pg. 510	1.34 Ac.
(7) VOLUME Pg.	0.235 Ac.

SURVEY PLAT OF
**KINGMAN SCHOOL LANDS &
CHESTER TOWNSHIP TRUSTEES LANDS**

SITUATED IN
NORTH KINGMAN
MILITARY SURVEY No. 2231
CHESTER TOWNSHIP
CLINTON COUNTY, OHIO

APPROVED FOR ACCURACY
Clinton County Engineer
Per B. Bailey

REVISED 10-8-82

OCT 12 1982

I HEREBY CERTIFY THIS TO BE A CORRECT PLAT OF A SURVEY MADE UNDER MY DIRECTION IN SEPTEMBER, 1982.

Richard D. Roll

REGISTERED SURVEYOR No. 4957



CLINCO
ENGINEERS - SURVEYORS
P. O. Box 241
62 1/2 E. SUGARTREE ST. WILMINGTON, OHIO

SCALE 1" = 50' DRAWN BY CLY CHECKED BY RDR
DATE September 23, 1982 DRAWN C-4348

- NOTES:
- "SET PIN" DENOTES 1/2" x 30" IRON PIN WITH PLASTIC CAP.
 - "SET NAIL" DENOTES P. K. MASONRY NAIL.
 - "SET SPIKE" DENOTES RAILROAD SPIKE.
 - REFERENCE BEARING: N59°30'00"E ON CENTERLINE OF LEWIS ROAD AS PER VOLUME 9, PAGE 43, OF THE CLINTON COUNTY SURVEYORS RECORD.