

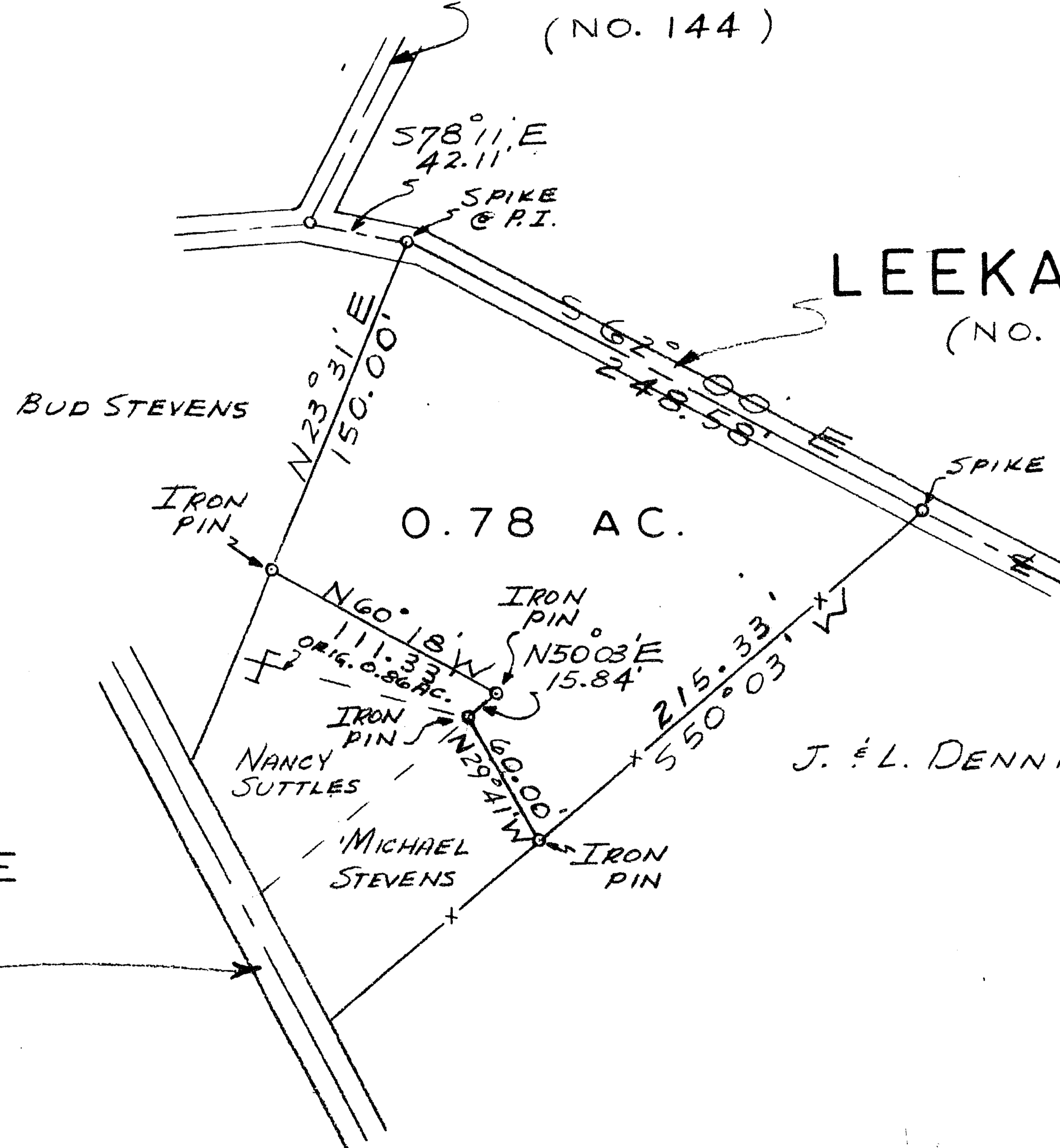
MAGNETIC BEARINGS

VOLUME 16 PLAT NO. 7
CLINTON COUNTY ENGINEERS
RECORD OF LAND DIVISION
DATE: SEPTEMBER 8, 1980
SCALE: 1" = 50'
TOWNSHIP - GREEN
MILITARY SURVEY NO. 1192

DEED REFERENCE
DEED BOOK 254 PAGE 300

LEVO ROAD
(NO. 144)

LEEKA ROAD
(NO. 143)



STATE ROUTE
NO. 73

J. & L. DENNIS

RECEIVED BY THE CLINTON COUNTY COMMISSIONERS
ON September 19 1980

APPROVED ON 9-19 1980

D M Fitz Daniel E Bailey

COMMISSIONERS OF CLINTON CO., OHIO

The approval of this plat by the Board of County Commissioners does not constitute the approval by the Board of Health, roads or streets, zoning and the drainage of this subdivision.

APPROVED FOR ACCURACY
Clinton County Engineer
Per M. Satterfield
SEP 18 1980



Robert E. Satterfield
CIVIL ENGINEER & SURVEYOR
WEST UNION, OHIO

APPROVAL
CLINTON COUNTY REGIONAL
PLANNING COMMISSION
DATE EXECUTIVE DIRECTOR

SURVEY
FOR
NANCY ANN SUTTLES
MILITARY SURVEY NO. 1192
GREEN TOWNSHIP
CLINTON COUNTY, OHIO
SCALE 1" = 50' SEPTEMBER, 1980