

I HEREBY CERTIFY THIS TO BE A CORRECT PLAT OF A SURVEY MADE UNDER MY DIRECTION IN JUNE, 1980.



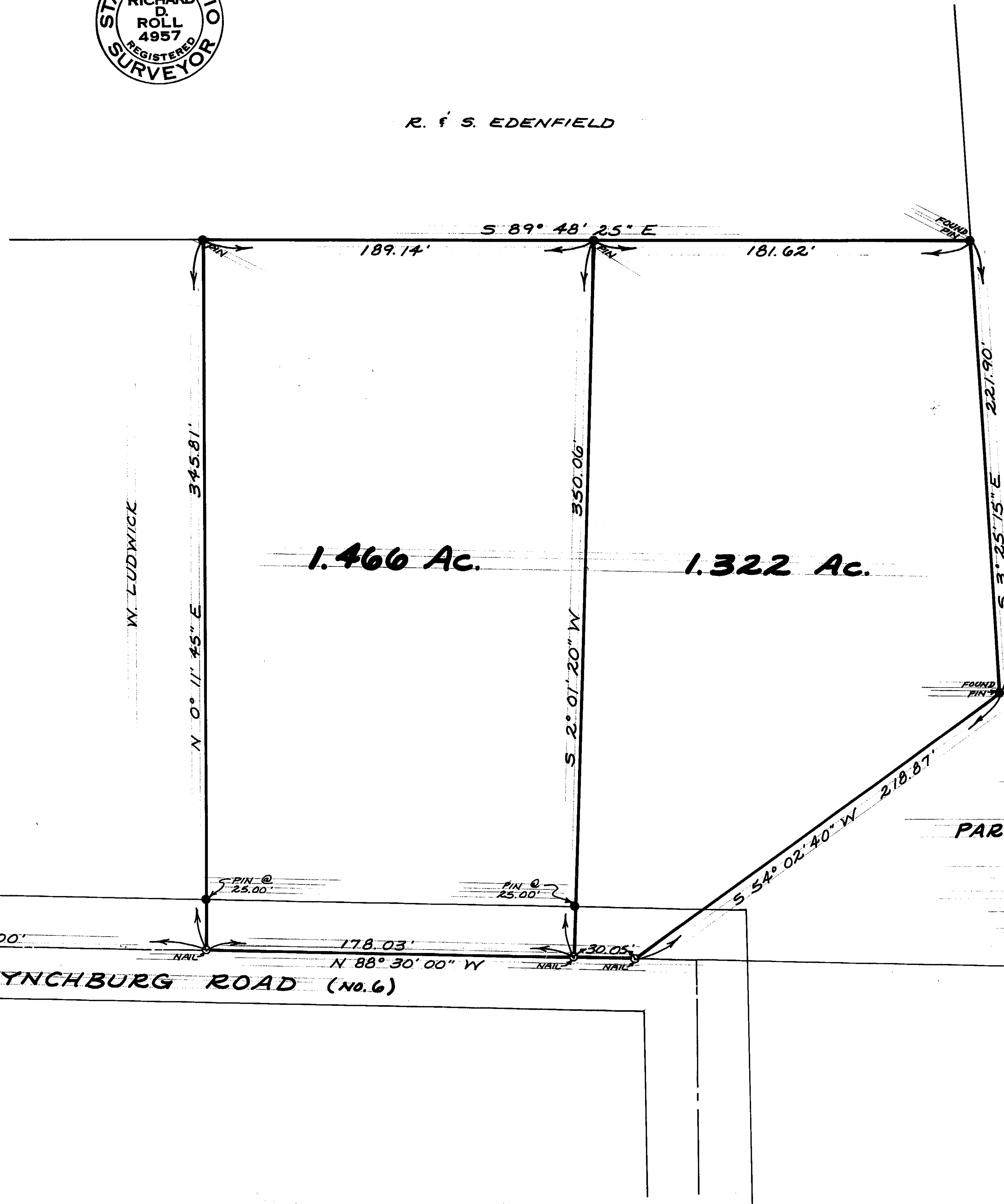
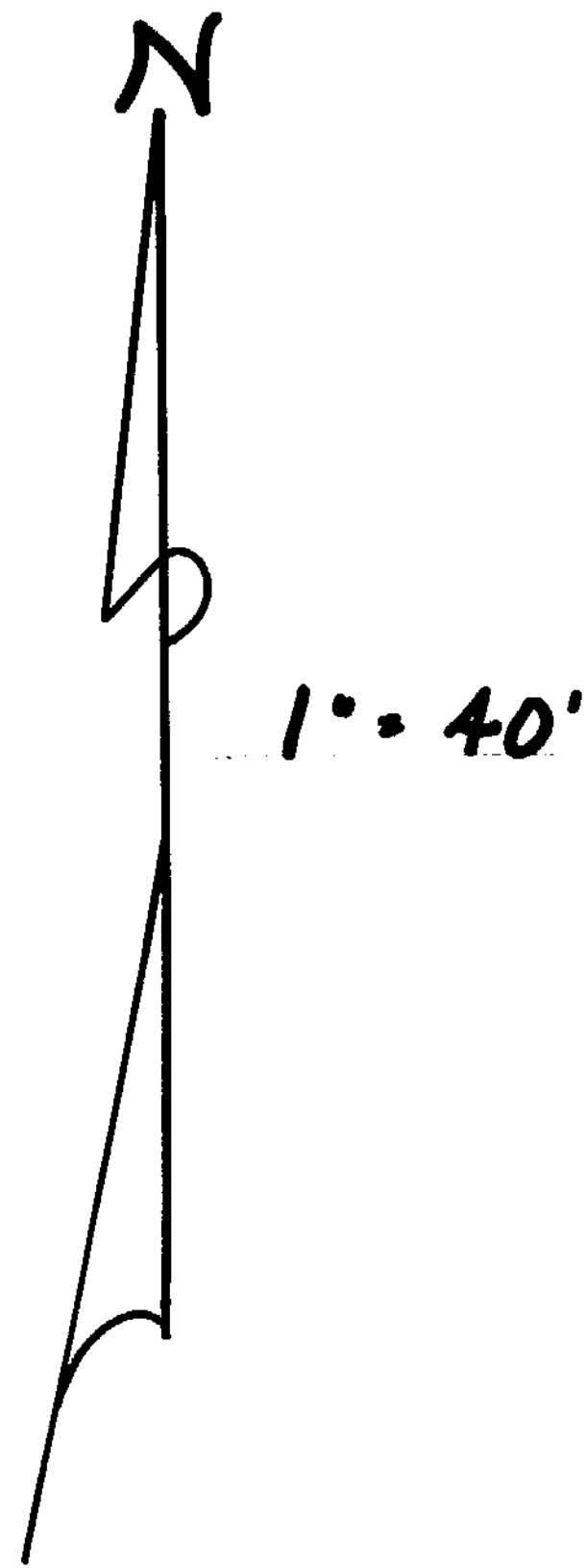
Richard D. Roll
REGISTERED SURVEYOR # 4957

R. & S. EDENFIELD

CLINTON COUNTY ENGINEERS
RECORD OF LAND DIVISION
VOLUME 16 PLAT NO. 59
DATE 7-1-80
SCALE 1" = 40'

DEED REFERENCE

DEED BOOK 264 PAGE 447
TOWNSHIP Clark
MILITARY SURVEY NO. 9534



J. E. H. WILSON

The approval of this plat by the Board of County Commissioners does not constitute the approval by the Board of Health, Health or Health, Health and the drainage of all substances.

RECEIVED BY THE CLINTON COUNTY COMMISSIONERS ON July 7 1980

Thompson J. Island
CLERK

APPROVED ON 7-7 1980

D. M. F. Orval C. Heckman

COMMISSIONERS OF CLINTON COUNTY, OHIO

SURVEY PLAT OF
PARTS OF **BEULAH GREGORY LANDS**

SITUATED IN
MILITARY SURVEY No. 9534
CLARK TOWNSHIP
CLINTON COUNTY, OHIO

APPROVED BY PRIOR DESCRIPTION
Clinton County Engineer
For M. Waters 7-7-80

CLINCO

ENGINEERS ~ SURVEYORS
P. O. Box 241

62 1/2 E. SUGARTREE ST. WILMINGTON, OHIO

SCALE <u>1" = 40'</u>	DRAWN BY <u>CLY</u>	CHECKED BY <u>RDR</u>
DATE <u>July 1, 1980</u>	DRAWING <u>C-4034</u>	