

RECEIVED BY THE CLINTON COUNTY COMMISSIONERS ON
September 2 1980

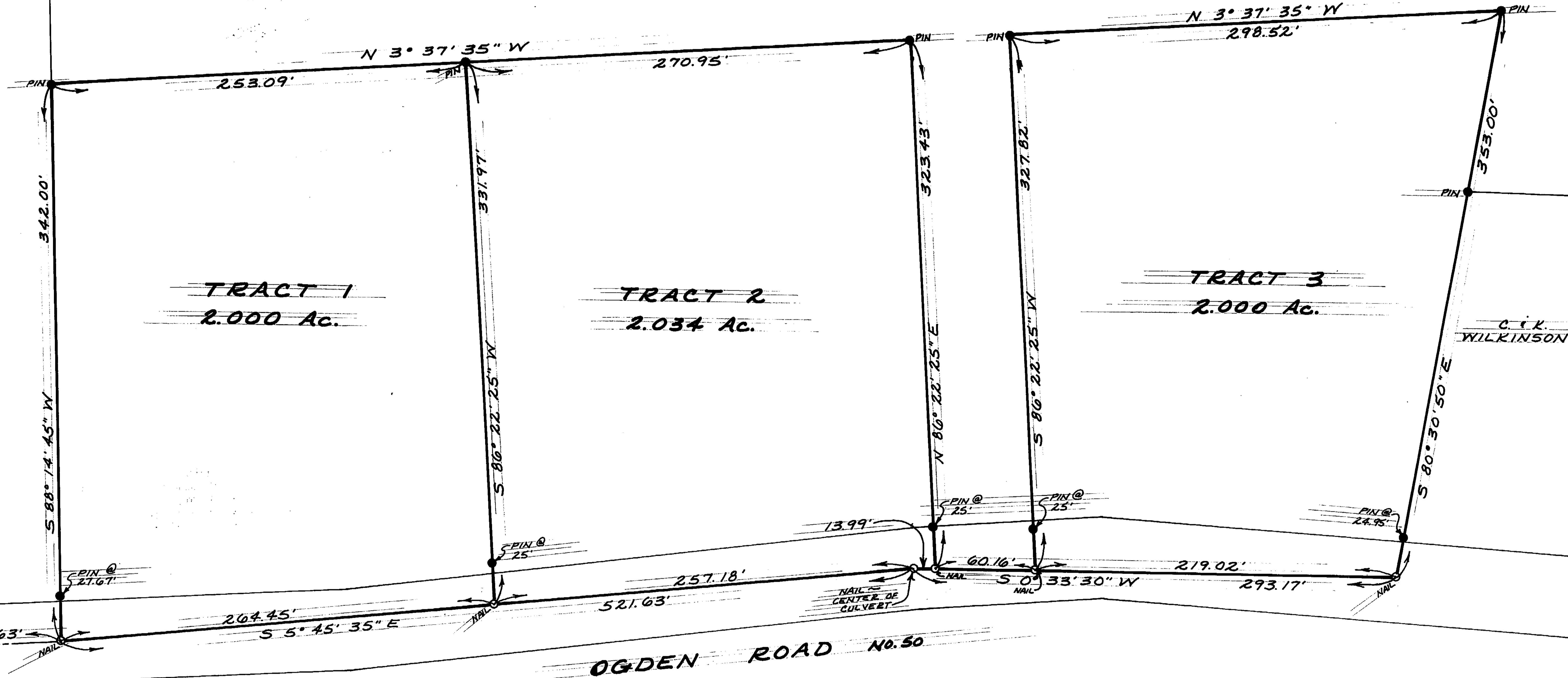
CLINTON COUNTY ENGINEERS
RECORD OF LAND DIVISION

VOLUME 16 PLAT NO. 4
DATE 8-26-80
SCALE 1"=50'

Nancy J. Island
CLERK
APPROVED ON 9-2 1980
D M Zil David E Bailey Oscar C Hackney
COMMISSIONERS OF CLINTON Co., OHIO

NATHAN S. HALE
D. B. 210 P. 612

The approval of this plat by the Board of County Commissioners does not constitute the approval by the Board of Health, roads or streets, zoning and the drainage of this subdivision.



SURVEY PLAT OF
PARTS OF **NATHAN S. HALE** LANDS

SITUATED IN
MILITARY SURVEY No. 2189
ADAMS TOWNSHIP
CLINTON COUNTY, OHIO

I HEREBY CERTIFY THIS TO BE A CORRECT PLAT OF A SURVEY MADE UNDER MY DIRECTION IN AUGUST, 1980.



Richard D. Roll
REGISTERED SURVEYOR No. 4957

APPROVED FOR ACCURACY
Clinton County Engineer
Per D M Zil
SEP 8 1980

CLINCO
ENGINEERS - SURVEYORS
P. O. Box 241
62 1/2 E. SUGARTREE ST. WILMINGTON, OHIO

SCALE <u>1"=50'</u>	DRAWN BY <u>CLY</u>	CHECKED BY <u>RDR</u>
DATE <u>August 26, 1980</u>	DRWS. <u>C-4059</u>	