

RECEIVED BY THE CLINTON COUNTY COMMISSIONERS ON October 27 1980.

Henry J. Island
CLERK

APPROVED ON 10-27 1980

D M Fife Daniel E Bailey

COMMISSIONERS OF CLINTON COUNTY, OHIO

The approval of this plat by the Board of County Commissioners does not constitute the approval by the Board of Health, roads or streets, zoning and the drainage of this subdivision.

BEGINNING POINT -
S E CORNER OF A
3.588 ACRE TRACT -
S. R. 15 Pg. 18

1" = 100'

N

CLINTON COUNTY ENGINEERS
RECORD OF LAND DIVISION

VOLUME 16 PLAT NO. 85

DATE 10-22-80

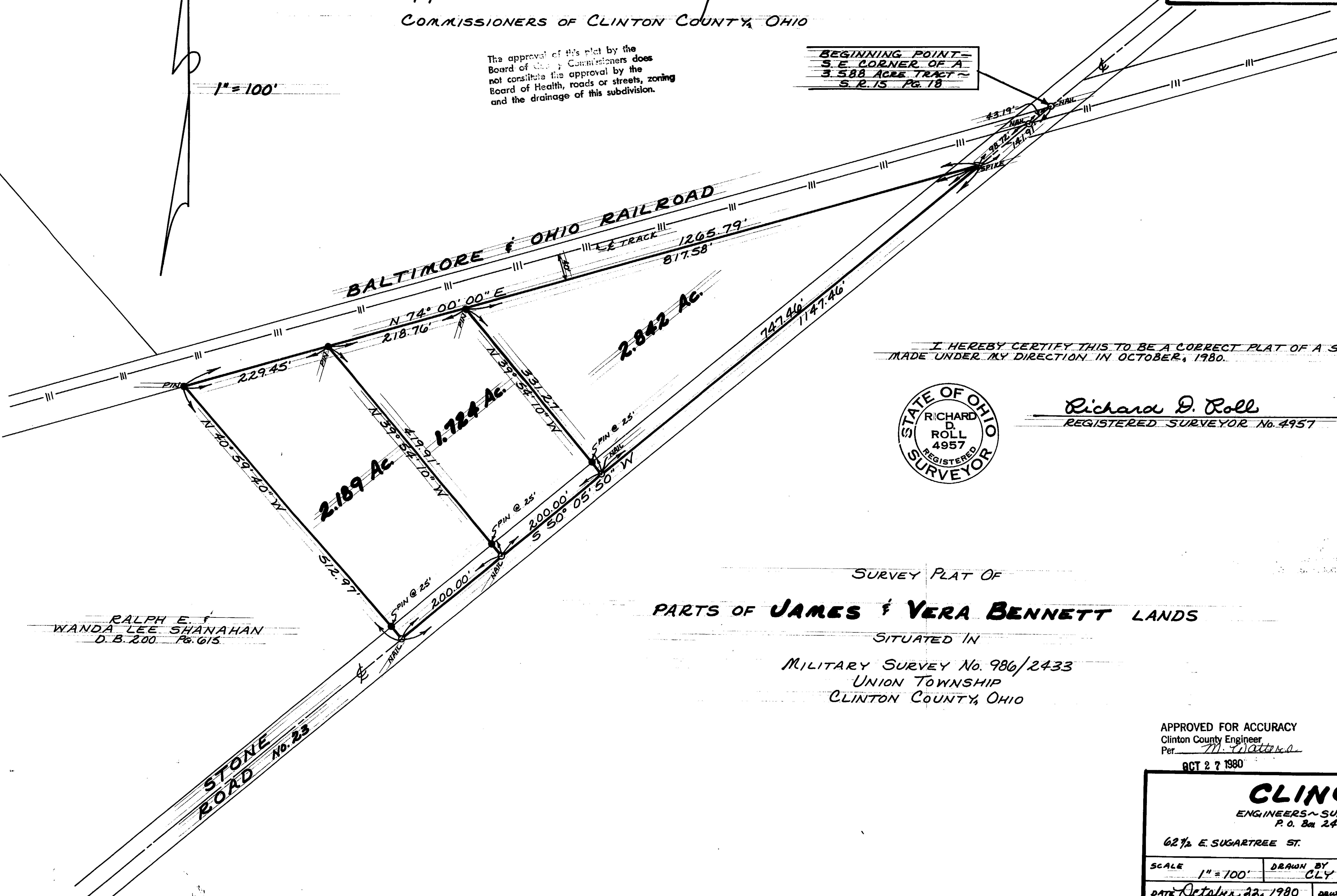
SCALE 1" = 100'

DEED REFERENCE

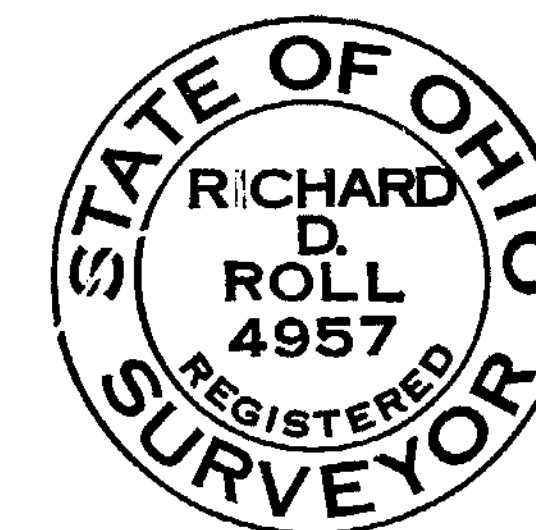
DEED BOOK 260 PAGE 666

TOWNSHIP Union

MILITARY SURVEY NO. 986/2433



I HEREBY CERTIFY THIS TO BE A CORRECT PLAT OF A SURVEY
MADE UNDER MY DIRECTION IN OCTOBER, 1980.



Richard D. Roll

REGISTERED SURVEYOR No. 4957

SURVEY PLAT OF

PARTS OF JAMES & VERA BENNETT LANDS

SITUATED IN

MILITARY SURVEY No. 986/2433

UNION TOWNSHIP

CLINTON COUNTY, OHIO

RALPH E. & WANDA LEE SHANAHAN
D. B. 200 Pg. 615

APPROVED FOR ACCURACY
Clinton County Engineer
Per M. J. [Signature]

OCT 27 1980

CLINCO

ENGINEERS-SURVEYORS
P. O. Box 241

62 1/2 E. SUGARTREE ST.

WILMINGTON, OHIO

SCALE 1" = 100'

DRAWN BY CLY

CHECKED BY RDR

DATE October 22, 1980

DRAWN C-4081