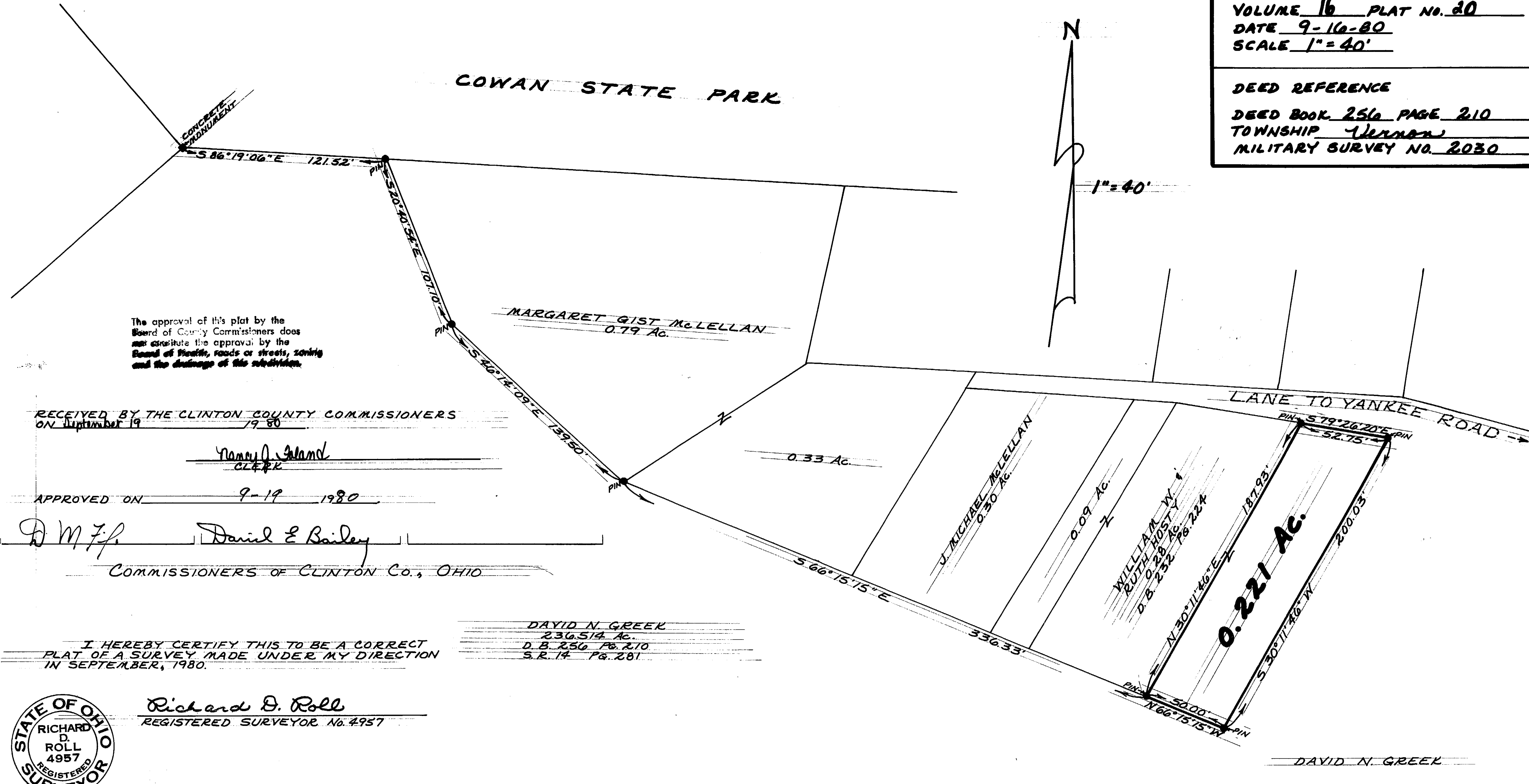


CLINTON COUNTY ENGINEERS
 RECORD OF LAND DIVISION
 VOLUME 16 PLAT No. 20
 DATE 9-16-80
 SCALE 1" = 40'

DEED REFERENCE
 DEED BOOK 256 PAGE 210
 TOWNSHIP Vernon
 MILITARY SURVEY NO. 2030



The approval of this plat by the Board of County Commissioners does not constitute the approval by the Board of Health, roads or streets, zoning and the drainage of this subdivision.

RECEIVED BY THE CLINTON COUNTY COMMISSIONERS
 ON September 19 1980

Nancy J. Island
 CLERK

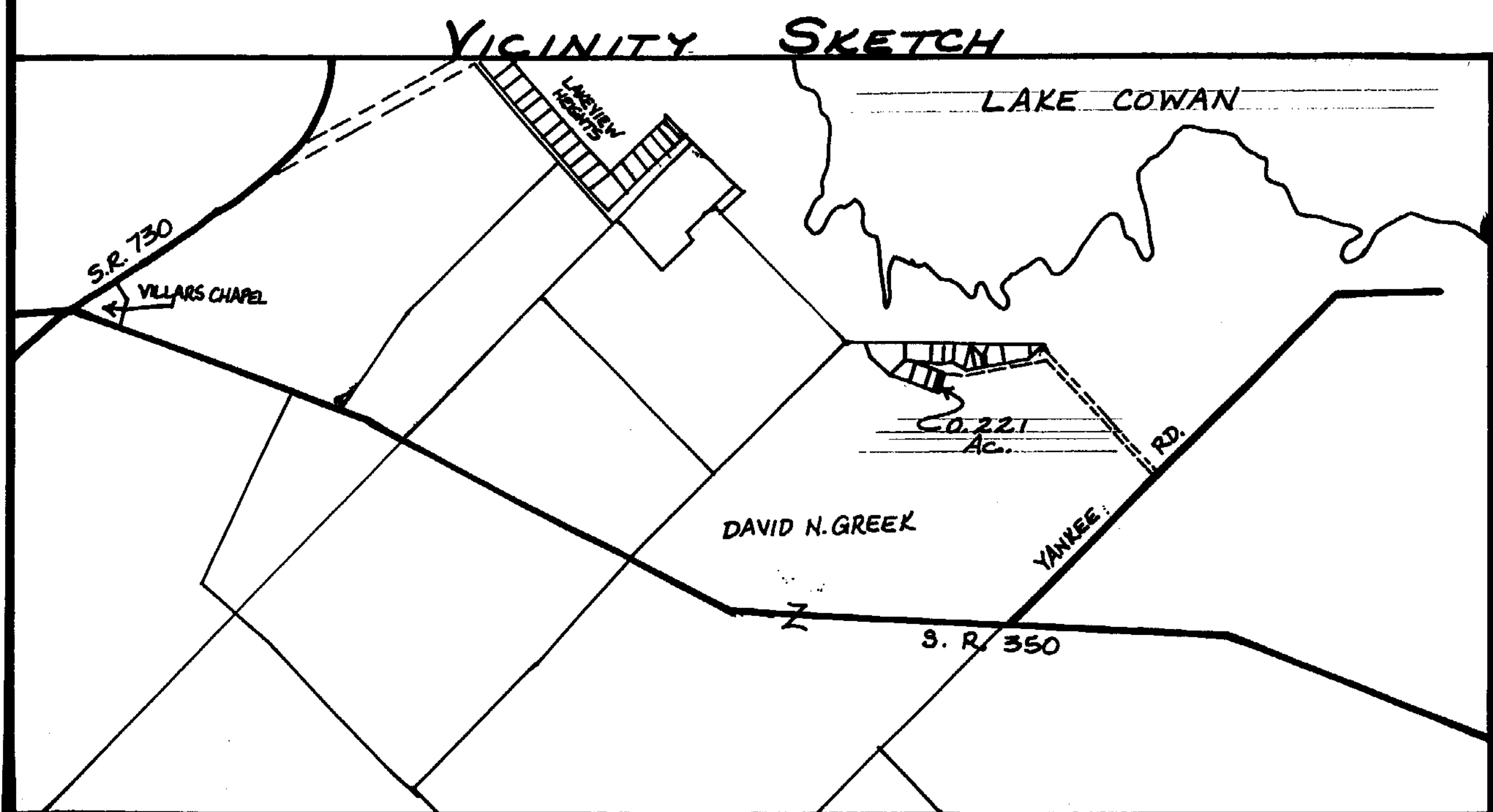
APPROVED ON 9-19 1980

D. M. F. David E. Bailey
 COMMISSIONERS OF CLINTON Co., OHIO

I HEREBY CERTIFY THIS TO BE A CORRECT
 PLAT OF A SURVEY MADE UNDER MY DIRECTION
 IN SEPTEMBER, 1980.

DAVID N. GREEK
 236.514 Ac.
 D. B. 256 Pg. 210
 S. R. 14 Pg. 281

Richard D. Roll
 REGISTERED SURVEYOR No. 4957



SURVEY PLAT OF
PART OF DAVID N. GREEK LANDS

SITUATED IN
 MILITARY SURVEY No. 2030
 YERNON TOWNSHIP
 CLINTON COUNTY, OHIO

APPROVED FOR ACCURACY
 Clinton County Engineer
 Per M. Waters
 SEP 18 1980

CLINCO
 ENGINEERS-SURVEYORS
 P. O. Box 241
 62 1/2 E. SUGARTREE ST. WILMINGTON, OHIO

SCALE <u>1" = 40'</u>	DRAWN BY <u>CLY</u>	CHECKED BY <u>RDR</u>
DATE <u>September 16, 1980</u>	DEWB. <u>C-4065</u>	