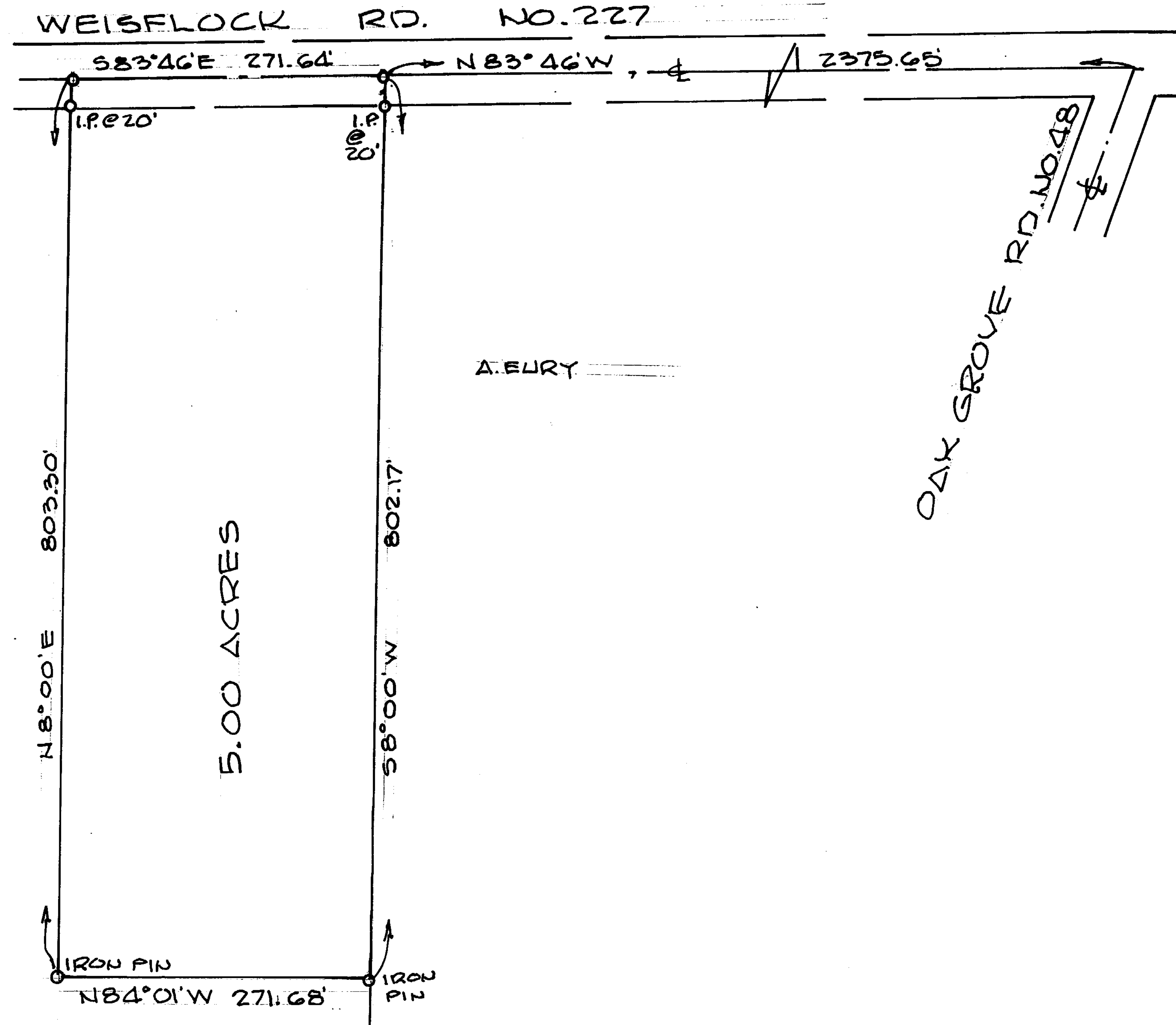
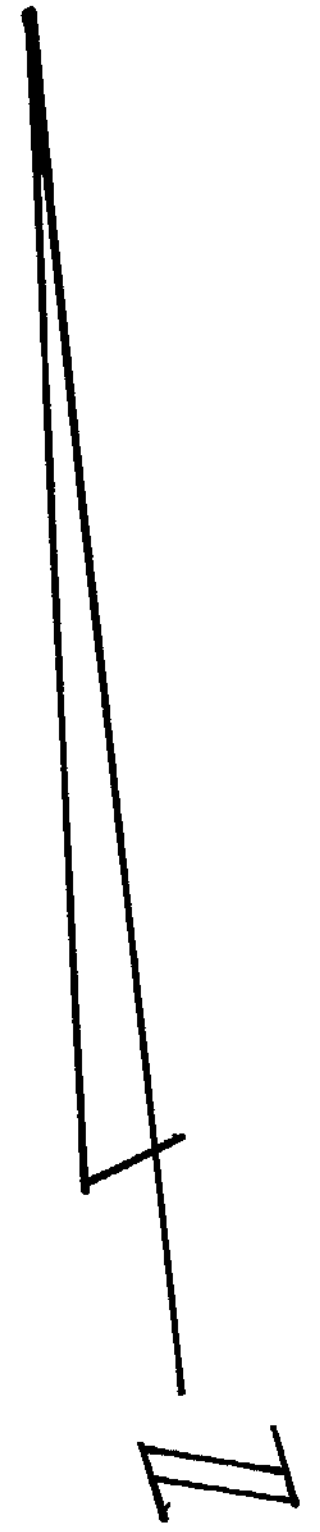


PLAT NO. 16 VOLUME 19
 CLINTON COUNTY ENGINEERS
 RECORD OF LAND DIVISION
 DATE 8-25-75
 SCALE 1"=100'
 DEED REFERENCE
 DEED BOOK 189 PAGE 364
 TOWNSHIP JEFFERSON
 MILITARY SURVEY NO. 446



CHARLES GREEN
 66.46 ACRES

APPROVED BY
 CLINTON COUNTY COMMISSIONERS

10-14-80 D M F
 DATE
10-14-80 Daniel E Bailey
 DATE

 DATE

The approval of this plat by the Board of County Commissioners does not constitute the approval by the Board of Health, roads or streets, zoning and the drainage of this subdivision.

APPROVED FOR ACCURACY
 Clinton County Engineer
 Per M. Waters
 OCT 9 1980

Charles M. Ryan



SURVEY FOR
 CHARLES GREEN
 BY
 CHARLES RYAN
 BOX 312 HILLSBORO, O.
 DATE 8-25-75 SCALE 1"=100'