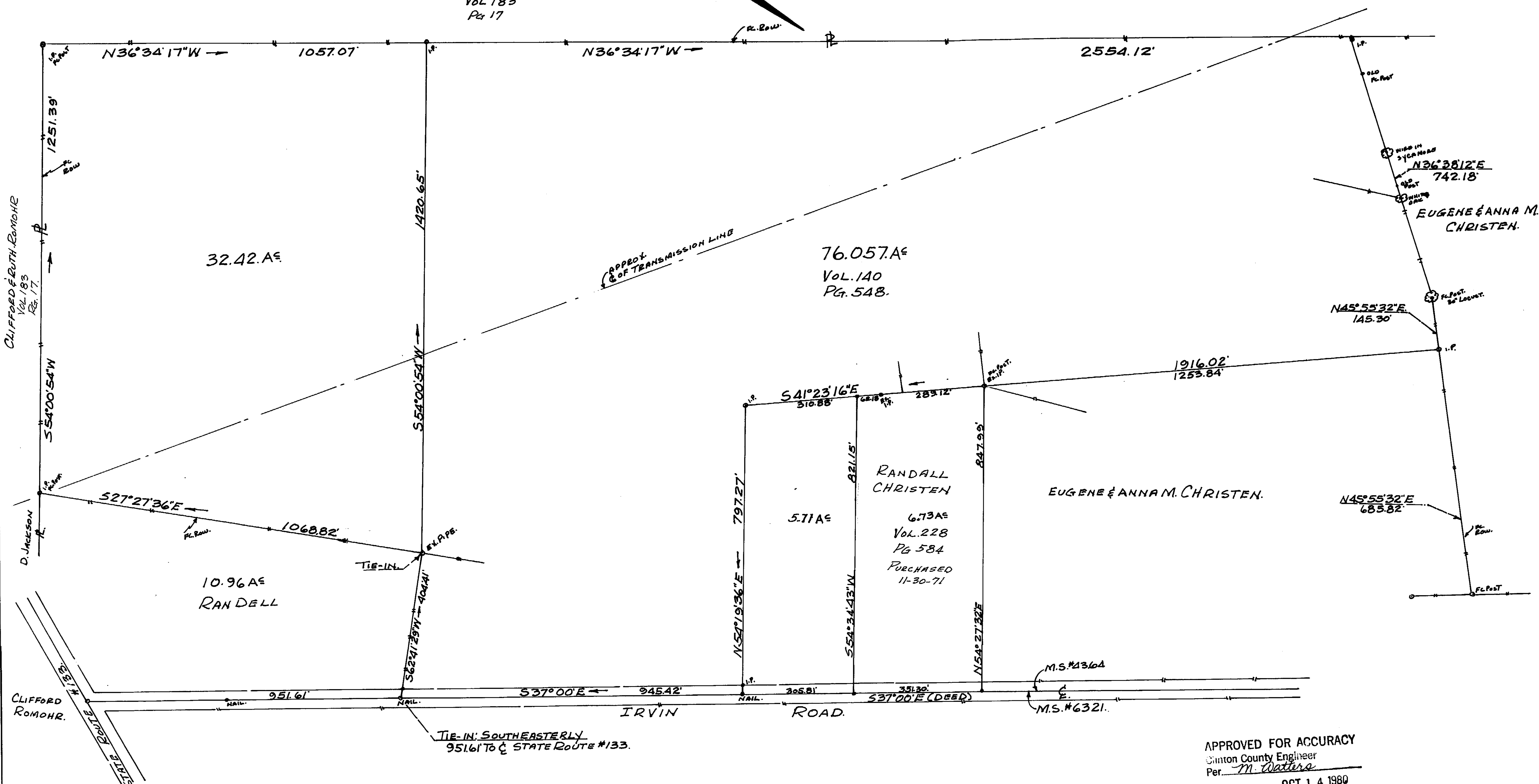
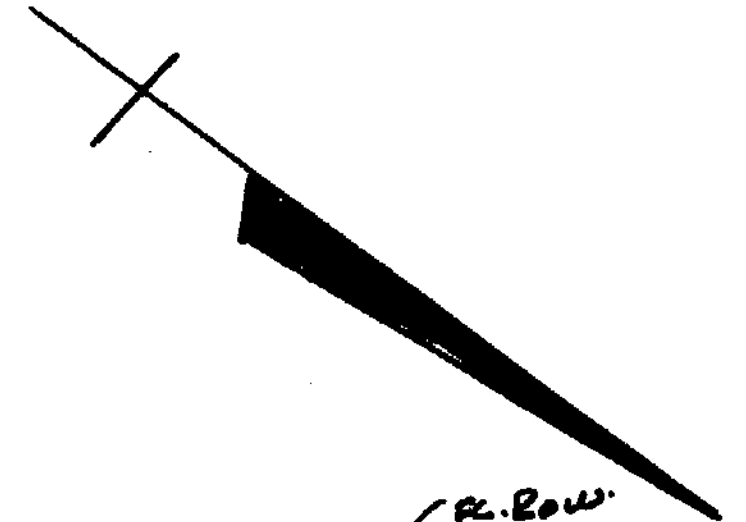
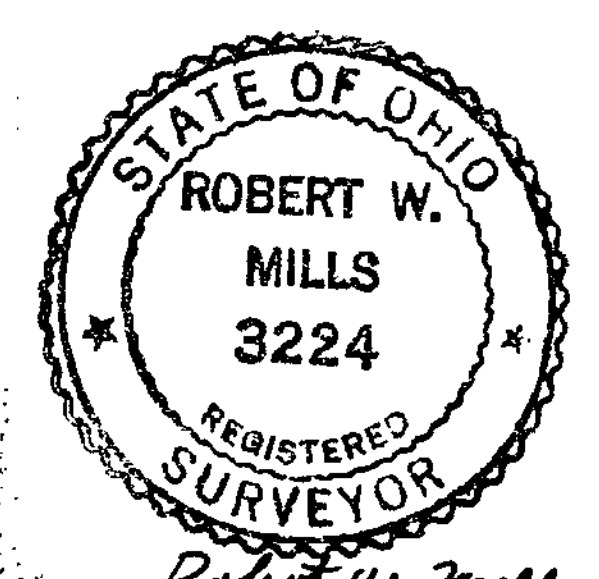


50 AC  
 CLIFFORD & RUTH  
 ROMOHR  
 Vol 183  
 Pg 17



CLIFFORD & RUTH ROMOHR  
 Vol 183  
 Pg. 17

CLIFFORD ROMOHR  
 STATE ROUTE #133



Robert W. Mills

APPROVED FOR ACCURACY  
 Clinton County Engineer  
 Per: M. Waters  
 OCT 14 1980

EUGENE & ANNA M. CHRISTEN  
 M.S. #4364.  
 MARION TOWNSHIP  
 CLINTON COUNTY, OHIO.  
 SCALE 1"=200'  
 SURVEYED DEC. 1979  
 ROBERT W. MILLS  
 #3224.