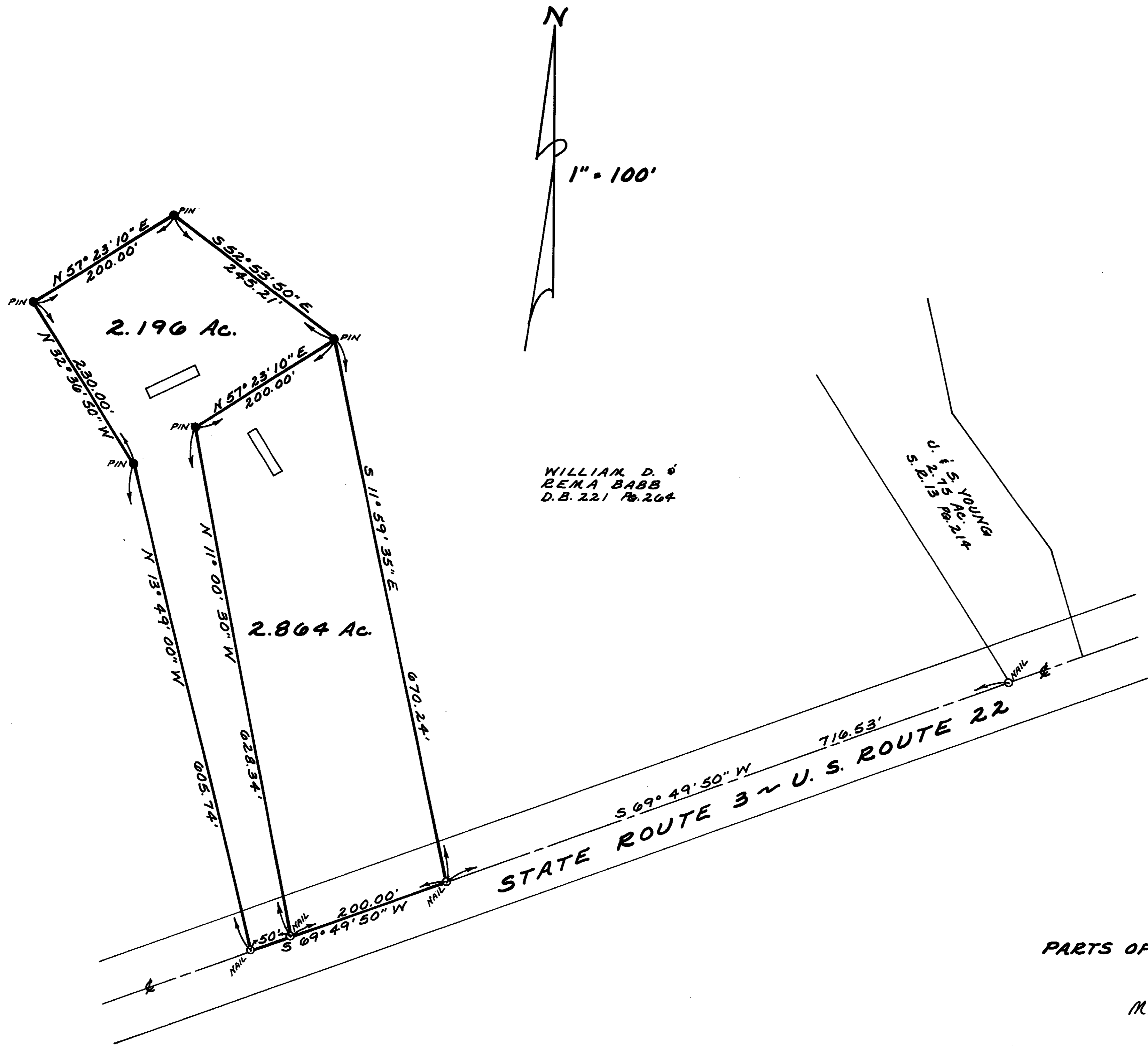


CLINTON COUNTY ENGINEERS
 RECORD OF LAND DIVISION
 VOLUME 16 PLAT NO. 159
 DATE 4-11-79
 SCALE 1"=100'

DEED REFERENCE
 DEED BOOK 221 PAGE 264
 TOWNSHIP Adams
 MILITARY SURVEY NO. 1507



WILLIAM D. &
 REINA BABB

WILLIAM D. &
 REINA BABB
 D.B. 221 Pg. 264

RECEIVED BY THE CLINTON COUNTY COMMISSIONERS ON
4-20 19 79

Helene L. Rannels
 CLERK

APPROVED ON 4-20 19 79

Oran C. Ashby David E. Bailey

COMMISSIONERS OF CLINTON COUNTY, OHIO

The approval of this plat by the Board of County Commissioners does not constitute the approval by the Board of Health, roads or streets, zoning and the drainage of this subdivision.

SURVEY PLAT OF
 PARTS OF WILLIAM D. BABB LANDS

SITUATED IN
 MILITARY SURVEY No. 1507
 ADAMS TOWNSHIP
 CLINTON COUNTY, OHIO

I HEREBY CERTIFY THIS TO BE A CORRECT PLAT OF A SURVEY MADE UNDER MY DIRECTION IN APRIL, 1979.



Richard D. Roll
 REGISTERED SURVEYOR No. 4957

APPROVED FOR ACCURACY
 Clinton County Engineer
 Per R. Lewis 4-11-79

CLINCO
 ENGINEERS & SURVEYORS
 P.O. Box 241
 62 1/2 E. SUGARTREE ST. WILMINGTON, OHIO

SCALE 1"=100'	DRAWN BY CLY	CHECKED BY RDR
DATE April 11, 1979	DRAWING C-3857	