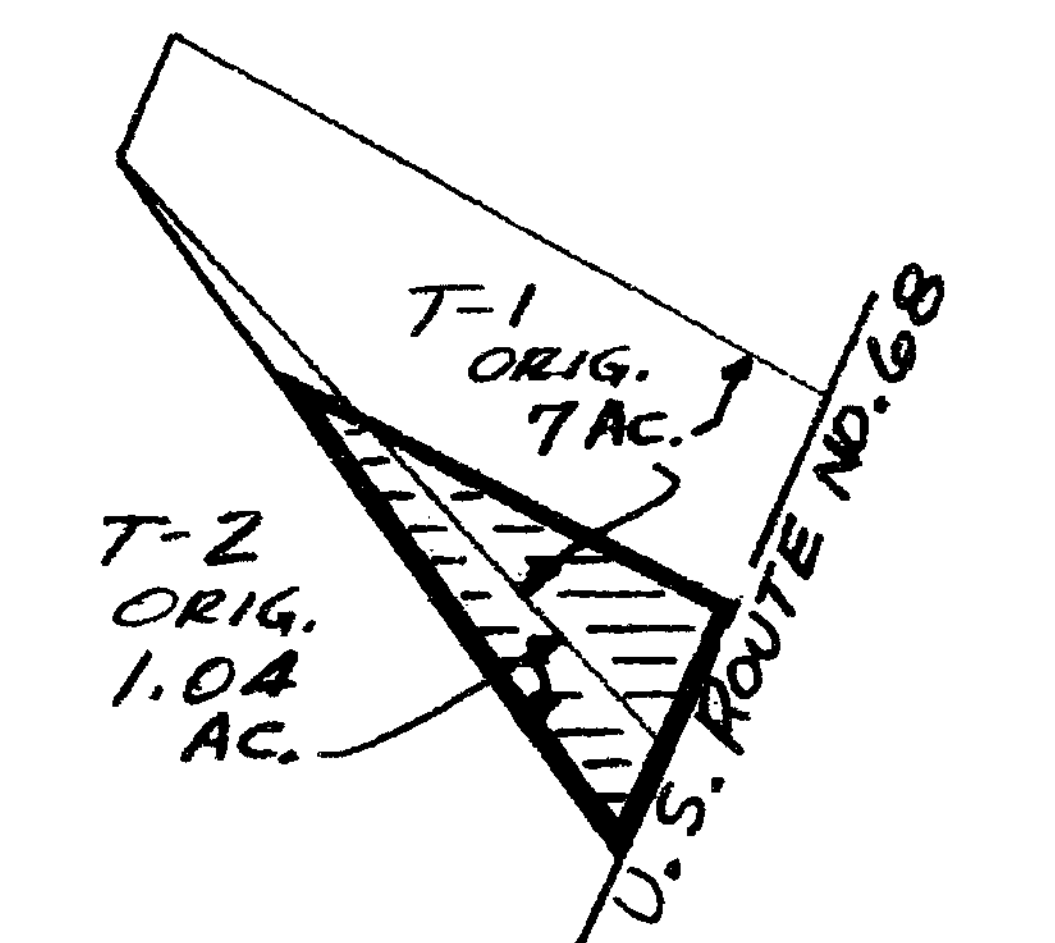


MAGNETIC BEARINGS



VOLUME 16 PLAT NO. 130
CLINTON COUNTY ENGINEERS
RECORD OF LAND DIVISION
DATE: AUGUST 20, 1981
SCALE: 1" = 100'
TOWNSHIP - JEFFERSON
MILITARY SURVEY NO. 2705

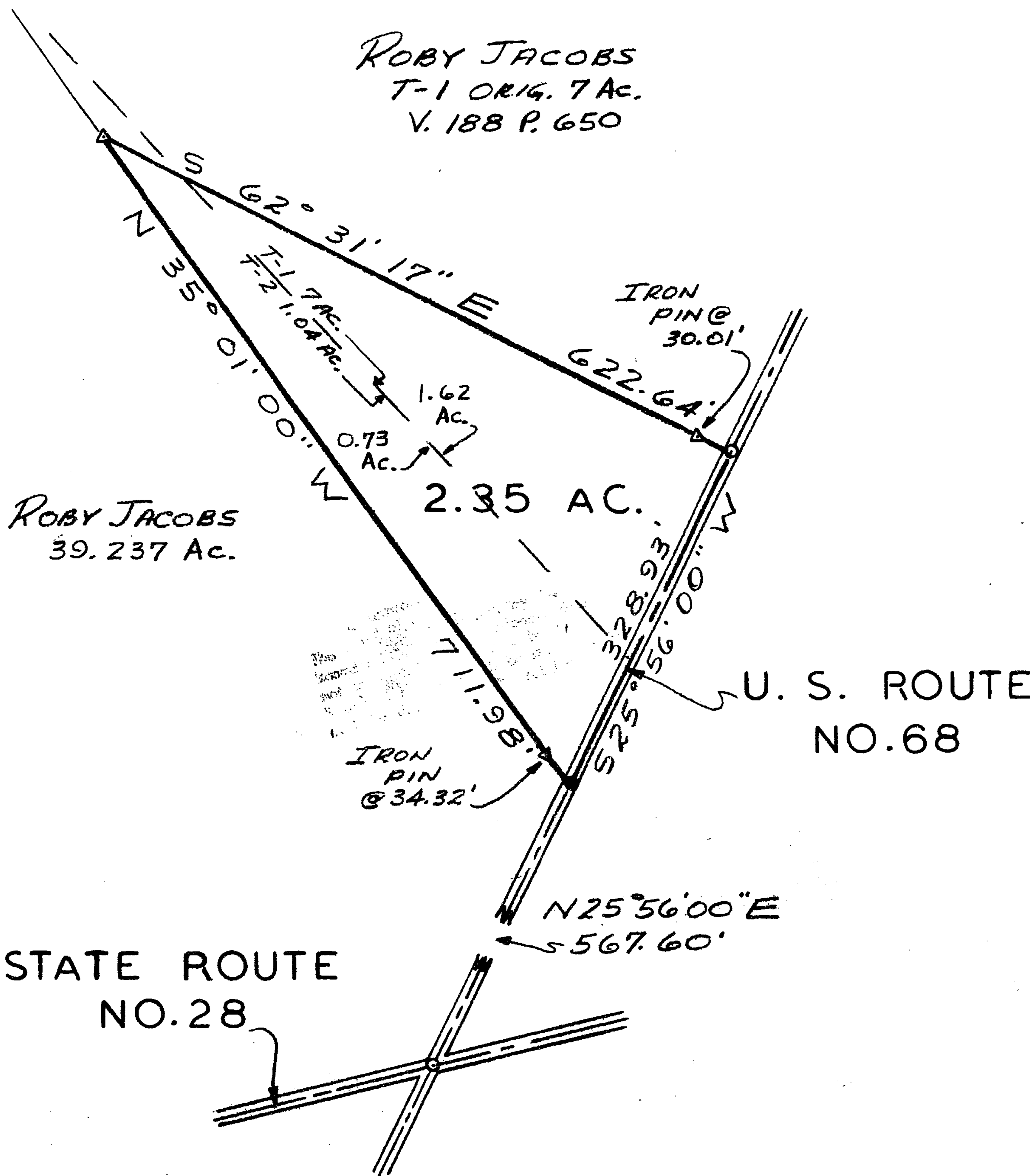
DEED REFERENCE
DEED BOOK 188 PAGE 650



VICINITY SKETCH
1" = 400'

LEGEND

- SPIKE FOUND IN E
- SPIKE SET IN E
- ▽ 5/8" IRON PIN SET



The approval of this plat by the Board of County Commissioners does not constitute the approval by the Board of Health, roads or streets, zoning and the drainage of this subdivision.

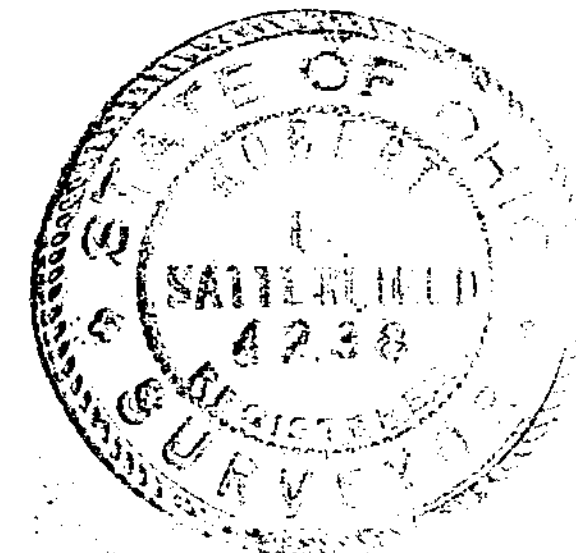
APPROVED FOR ACCURACY
Clinton County Engineer
Per B. Satterfield

AUG 24 1981

APPROVAL
CLINTON COUNTY COMMISSIONERS

DATE 8-24-81 David E. Bailey
 DATE 8-24-81 D.M. Fife
 DATE _____

SURVEY BY
Robert E. Satterfield
 ROBERT E. SATTERFIELD
 CIVIL ENGINEER & SURVEYOR
 WEST UNION, OHIO
 P. S. NO. 4238



SURVEY FOR
ROBY JACOBS
 MILITARY SURVEY NO. 2705
 JEFFERSON TOWNSHIP
 CLINTON COUNTY, OHIO
 SCALE 1" = 100' AUGUST, 1981