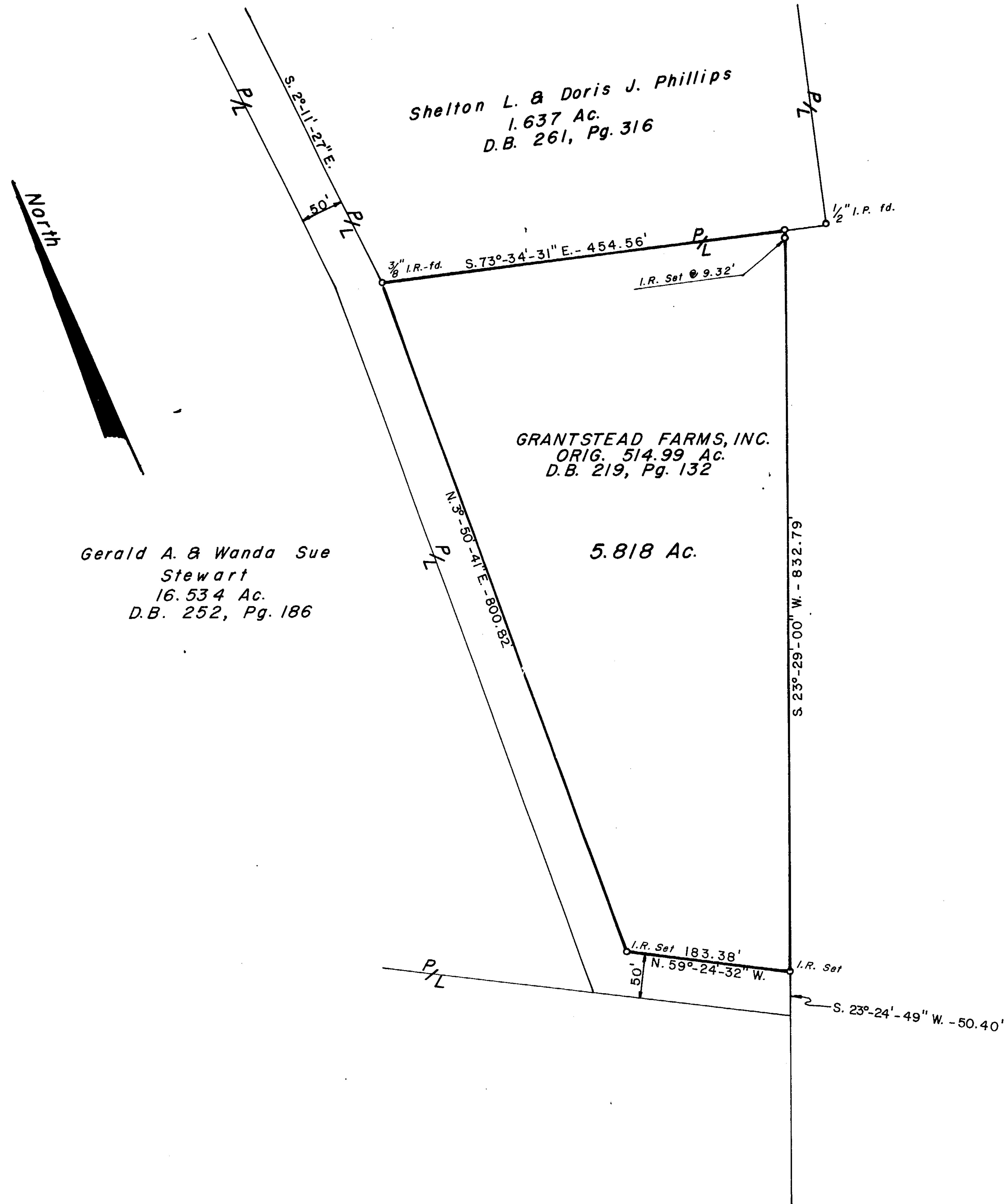


VOLUME 16 PLAT NO. 13
 CLINTON COUNTY ENGINEER'S
 RECORD OF LAND SURVEYS
 DATE: SEPT. 17, 1980
 SCALE: 1" = 100'
 DEED REFERENCE:
D.B. 219, Pg. 132
 TOWNSHIP: UNION
 MILITARY SURVEY: 2248



Gerald A. & Wanda Sue
 Stewart
 16.534 Ac.
 D.B. 252, Pg. 186

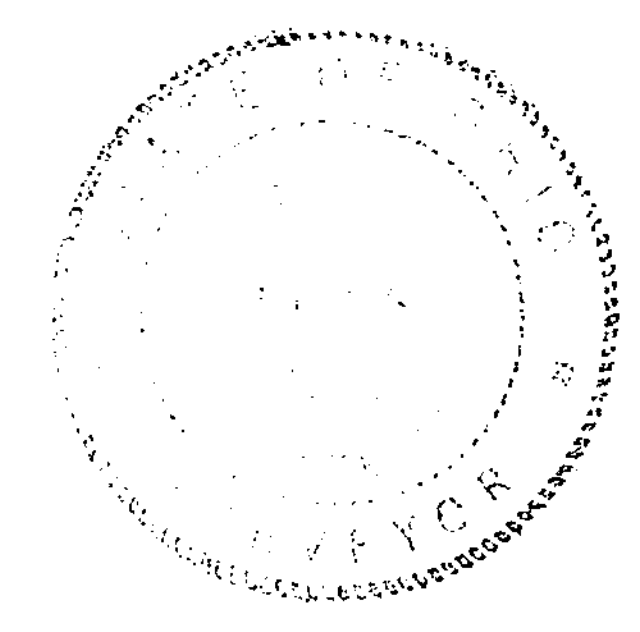
GRANTSTEAD FARMS, INC.
 ORIG. 514.99 Ac.
 D.B. 219, Pg. 132

Shelton L. & Doris J. Phillips
 1.637 Ac.
 D.B. 261, Pg. 316

APPROVED FOR ACCURACY
 County Engineer
Melodee L. Wildschmitt
 OCT 9 1980

GALE L. HELMS & ASSOC., INC. Consulting Engineers & Surveyors 222 N. OAKLAND AVE. WASHINGTON C.H., OHIO	
SURVEY OF 5.818 ACRES V.M.S. 2248 UNION TOWNSHIP CLINTON COUNTY, OHIO	
Sept. 17, 1980	Scale: 1" = 100'

This Survey prepared for Grantstead Farms, Inc.



Gale L. Helms
 Gale L. Helms, Registered Surveyor #4706