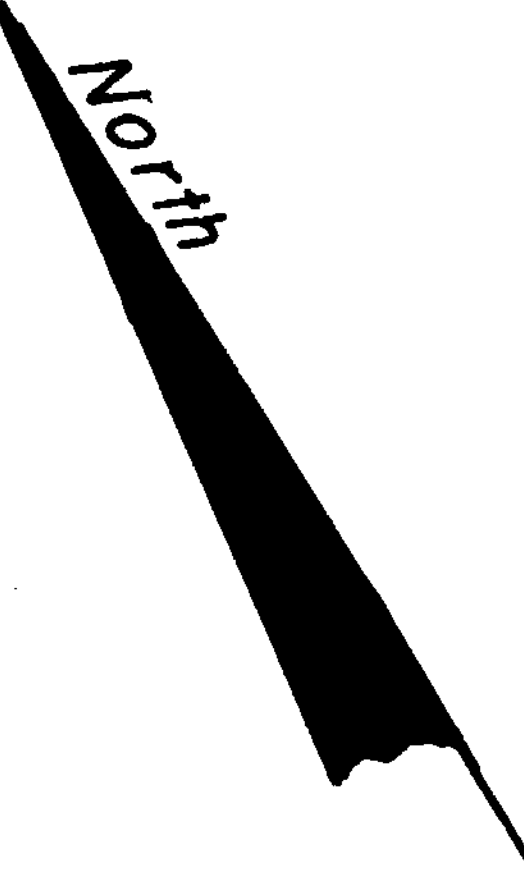
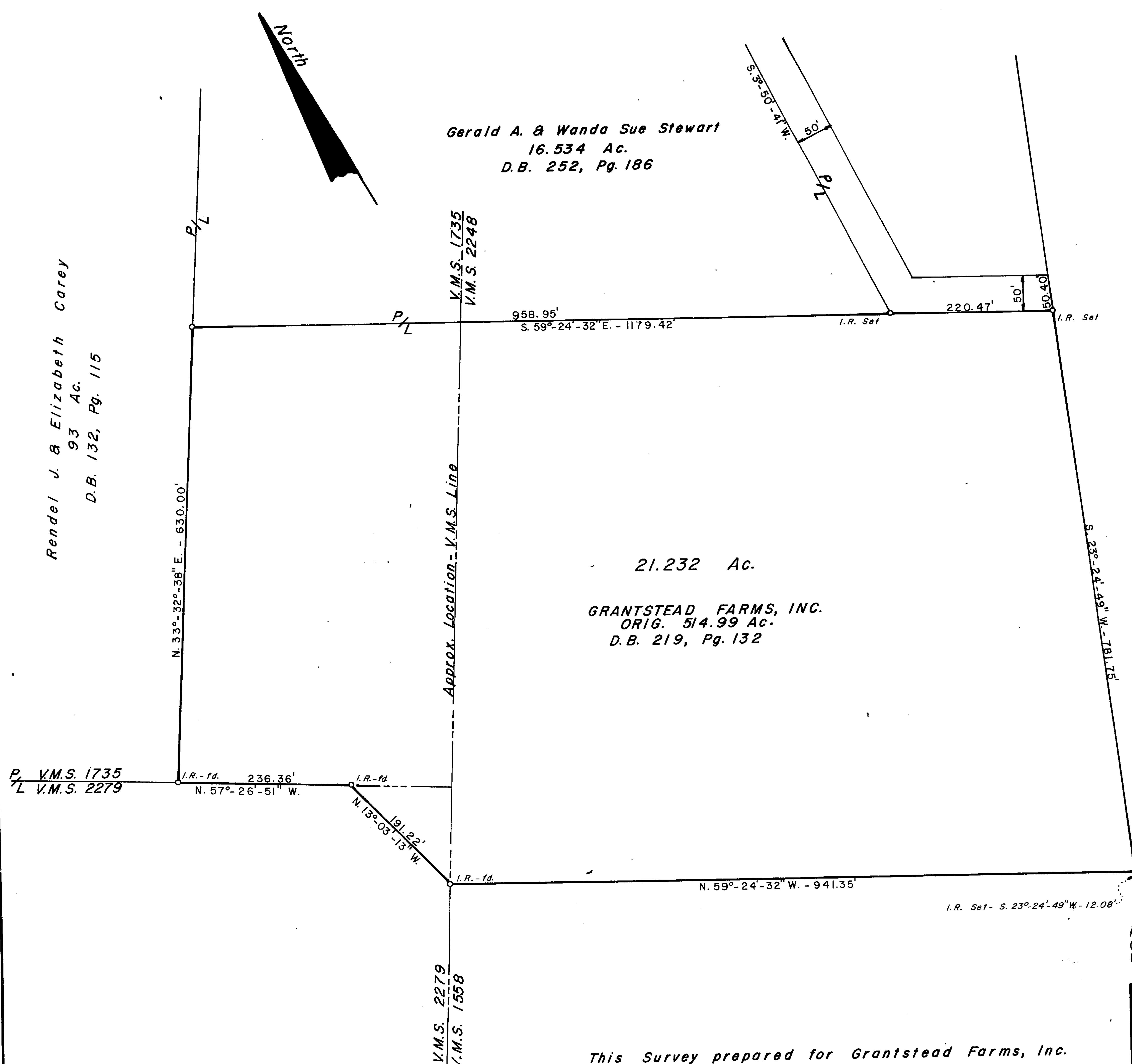


VOLUME 16 PLAT NO. 12
 CLINTON COUNTY ENGINEER'S
 RECORD OF LAND SURVEYS
 DATE: SEPT. 17, 1980
 SCALE: 1" = 100'
 DEED REFERENCE:
D.B. 219, Pg. 132
 TOWNSHIP: UNION
 MILITARY SURVEY: 1735, 2279,
2248



Gerald A. & Wanda Sue Stewart
 16.534 Ac.
 D.B. 252, Pg. 186

Rendel J. & Elizabeth Carey
 93 Ac.
 D.B. 132, Pg. 115



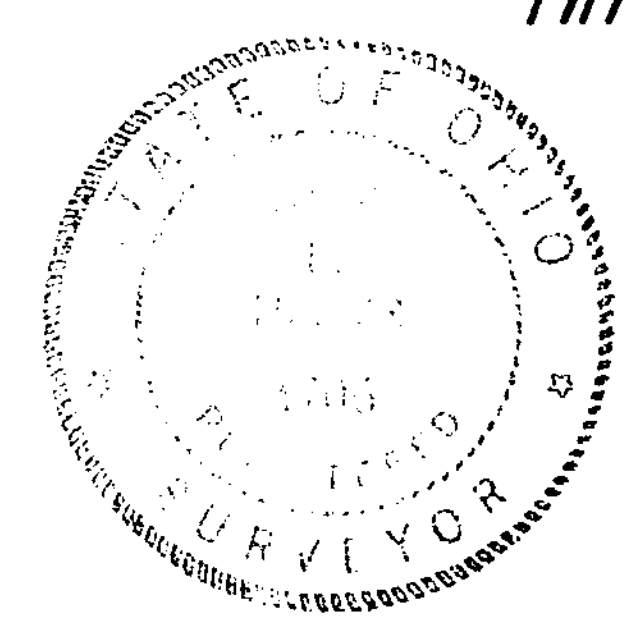
21.232 Ac.
 GRANTSTEAD FARMS, INC.
 ORIG. 514.99 Ac.
 D.B. 219, Pg. 132

APPROVED FOR ACCURACY
 Clinton County Engineer
 Per M. L. Helms
 OCT 3 1980

GALE L. HELMS & ASSOC., INC.
 CONSULTING ENGINEERS & SURVEYORS
 222 N. OAKLAND AVE.
 WASHINGTON C.H., OHIO

SURVEY OF 21.232 ACRES
 V.M.S. 1735, 2279 & 2248
 UNION TOWNSHIP
 CLINTON COUNTY, OHIO

Sept. 17, 1980 Scale: 1" = 100'



This Survey prepared for Grantstead Farms, Inc.
Gale L. Helms
 Gale L. Helms, Reg. Surveyor #4706