

CLINTON COUNTY ENGINEERS
 RECORD OF LAND DIVISION
 VOLUME 16 PLAT NO. 11
 DATE 5-10-79
 SCALE 1"=200'

DEED REFERENCE
 DEED BOOK 250 PAGE 53
 TOWNSHIP Green
 MILITARY SURVEY No. 1192

RECEIVED BY THE CLINTON COUNTY COMMISSIONERS ON 5-11 1979

Helen J. Rannella
 CLERK

APPROVED ON 5-11 1979

Dean C. Hackney D.M.F.

Daniel E. Bailey
 COMMISSIONERS OF CLINTON COUNTY, OHIO

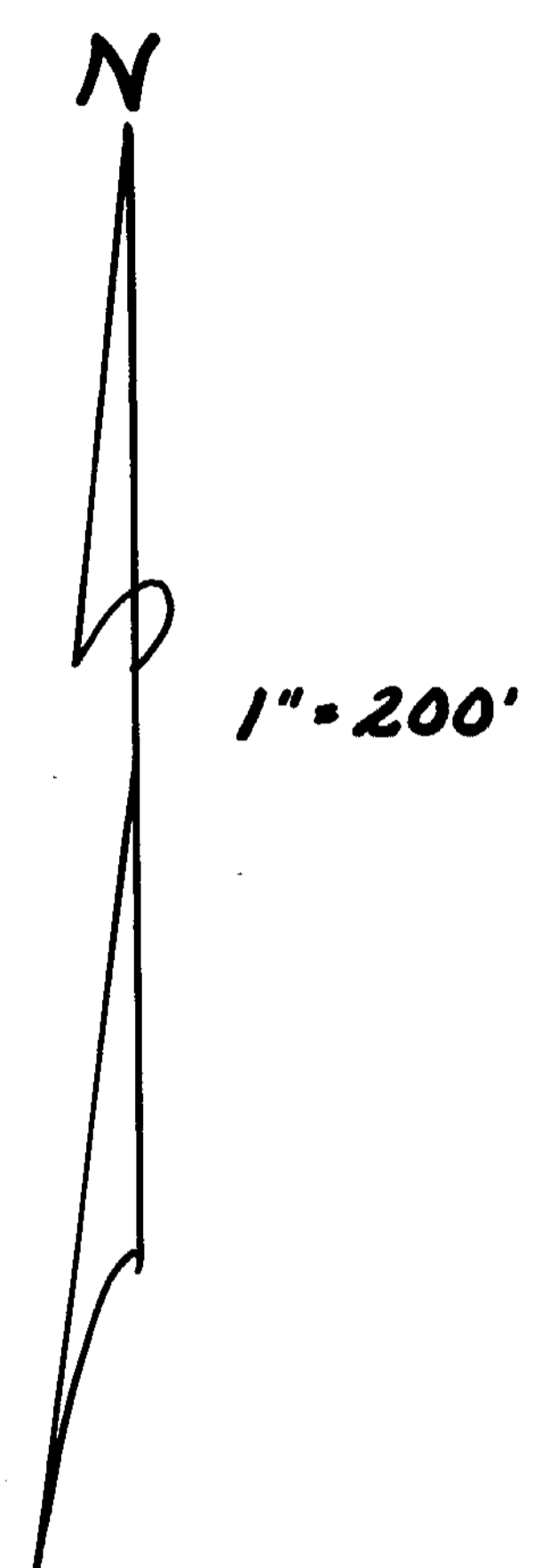
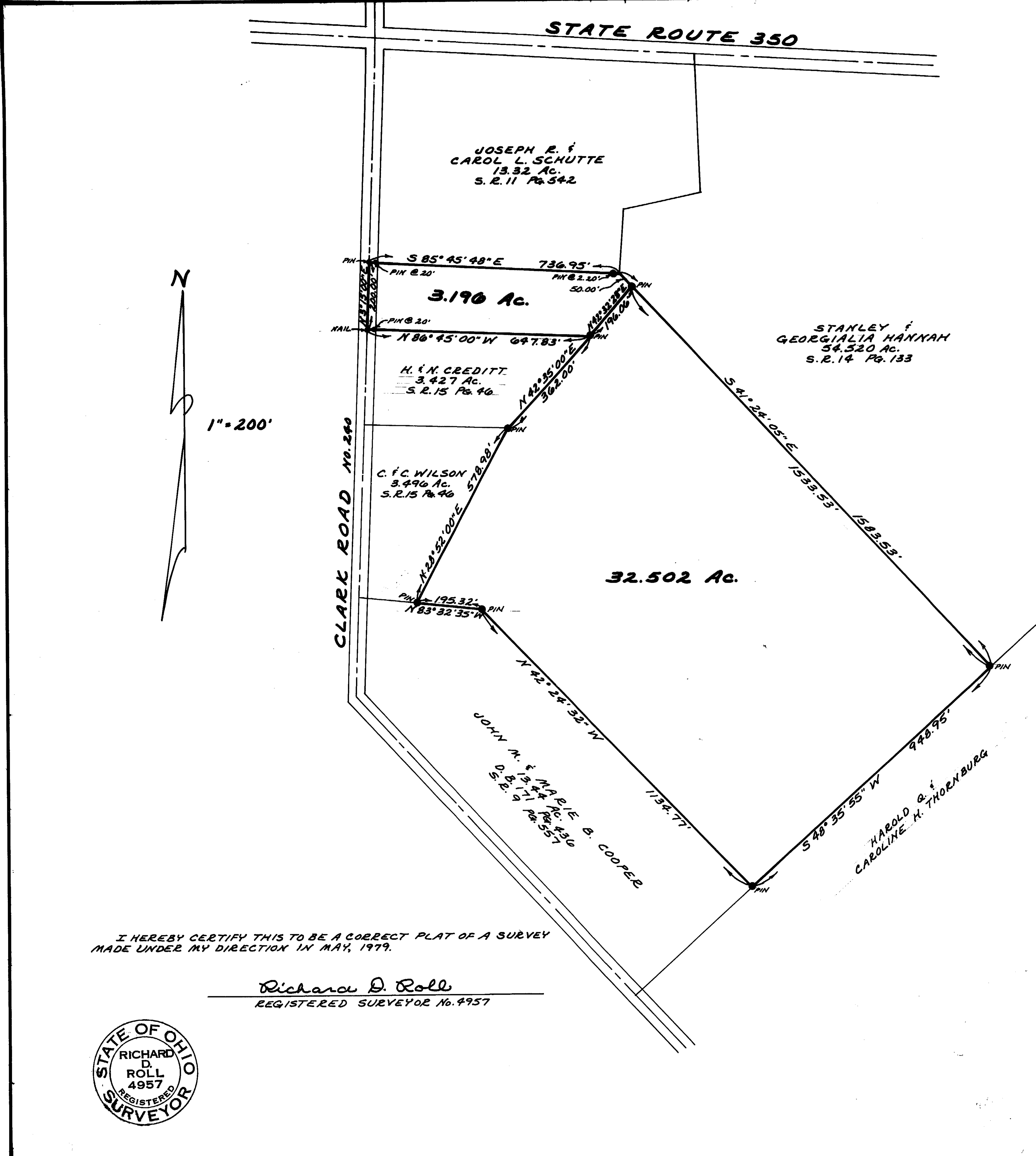
The approval of this plat by the Board of County Commissioners does not constitute the approval by the Board of Health, roads or streets, zoning and the drainage of this subdivision.

SURVEY PLAT OF
 PARTS OF JOHN M. COOPER LANDS
 SITUATED IN
 MILITARY SURVEY No. 1192
 GREEN TOWNSHIP
 CLINTON COUNTY, OHIO

APPROVED FOR ACCURACY
 Clinton County Engineer
 Per F. LEWIS 5-11-79

CLINCO
 ENGINEERS & SURVEYORS
 P. O. Box 241
 627 1/2 E. SUGARTREE ST. WILMINGTON, OHIO

SCALE 1"=200'	DRAWN BY CLY	CHECKED BY RDR
DATE May 10, 1979	DRAWN C-3867	



I HEREBY CERTIFY THIS TO BE A CORRECT PLAT OF A SURVEY MADE UNDER MY DIRECTION IN MAY, 1979.

Richard D. Roll
 REGISTERED SURVEYOR No. 4957

