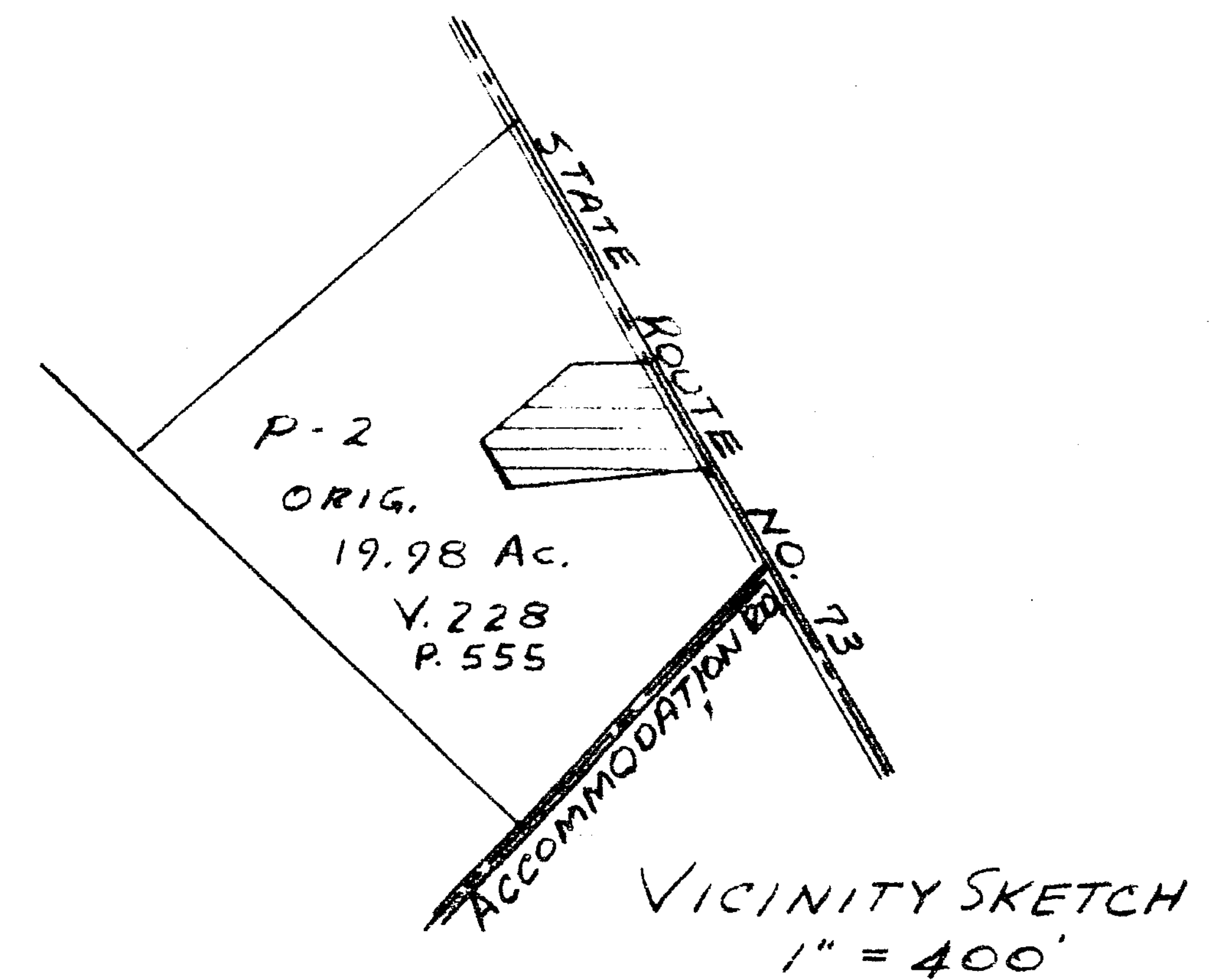
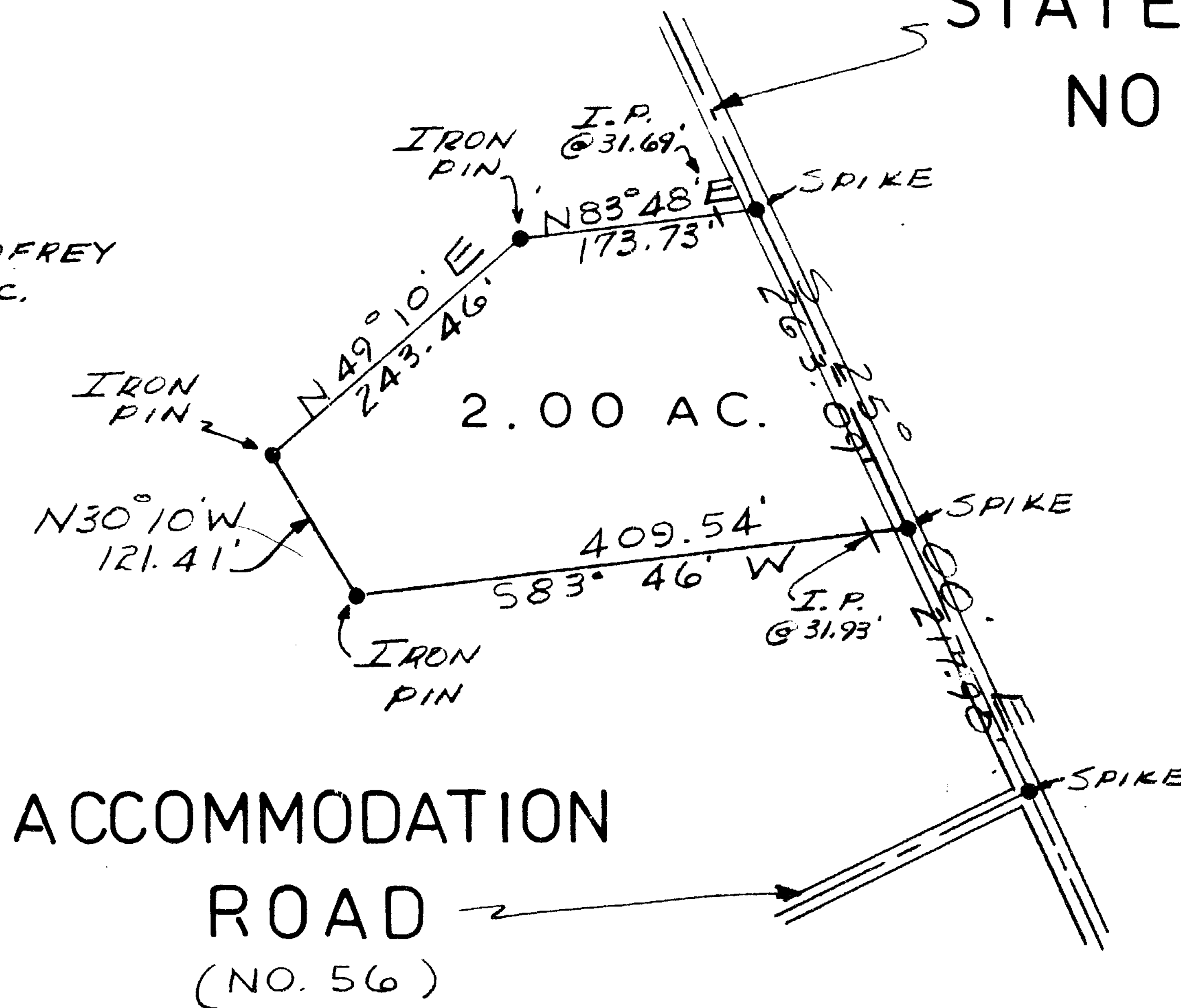


VOLUME 16 PLAT NO. 10
 CLINTON COUNTY ENGINEERS
 RECORD OF LAND DIVISION
 DATE: OCTOBER 1, 1979
 SCALE: 1" = 100'
 TOWNSHIP - GREEN
 M. S. NO. - 2386

DEED REFERENCE
 DEED BOOK 228 PAGE 555

STATE ROUTE
 NO. 73

LOUISE C. GODFREY
 ORIG. 19.98 AC.
 V. 228 P. 555



APPROVED BY CLINTON
 COUNTY COMMISSIONERS

NAMES	DATE
<i>D.M. Fife</i>	9-29-80
<i>David E. Barley</i>	9-29-80

The approval of this plat by the Board of County Commissioners does not constitute the approval by the Board of Health, roads or streets, zoning and the drainage of this subdivision.

APPROVED FOR ACCURACY
 Clinton County Engineer
Pat M. Hildebrand
 SEP 29 1980



Robert E. Satterfield
 CIVIL ENGINEER & SURVEYOR
 WEST UNION, OHIO

APPROVAL
 CLINTON COUNTY REGIONAL
 PLANNING COMMISSION

 DATE EXECUTIVE DIRECTOR

SURVEY
 FOR
LOUISE C. GODFREY

MILITARY SURVEY NO. 2386
 GREEN TOWNSHIP
 CLINTON COUNTY, OHIO
 SCALE 1" = 100' OCTOBER, 1979

REVISED PLAT 9-15-80