

I HEREBY CERTIFY THIS TO BE A CORRECT PLAT OF A SURVEY
MADE UNDER MY DIRECTION IN AUGUST, 1978.



Richard D. Roll
REGISTERED SURVEYOR No. 4957

CLINTON COUNTY ENGINEERS
RECORD OF LAND DIVISION

VOLUME 15 PLAT NO. 34

DATE 8-25-78

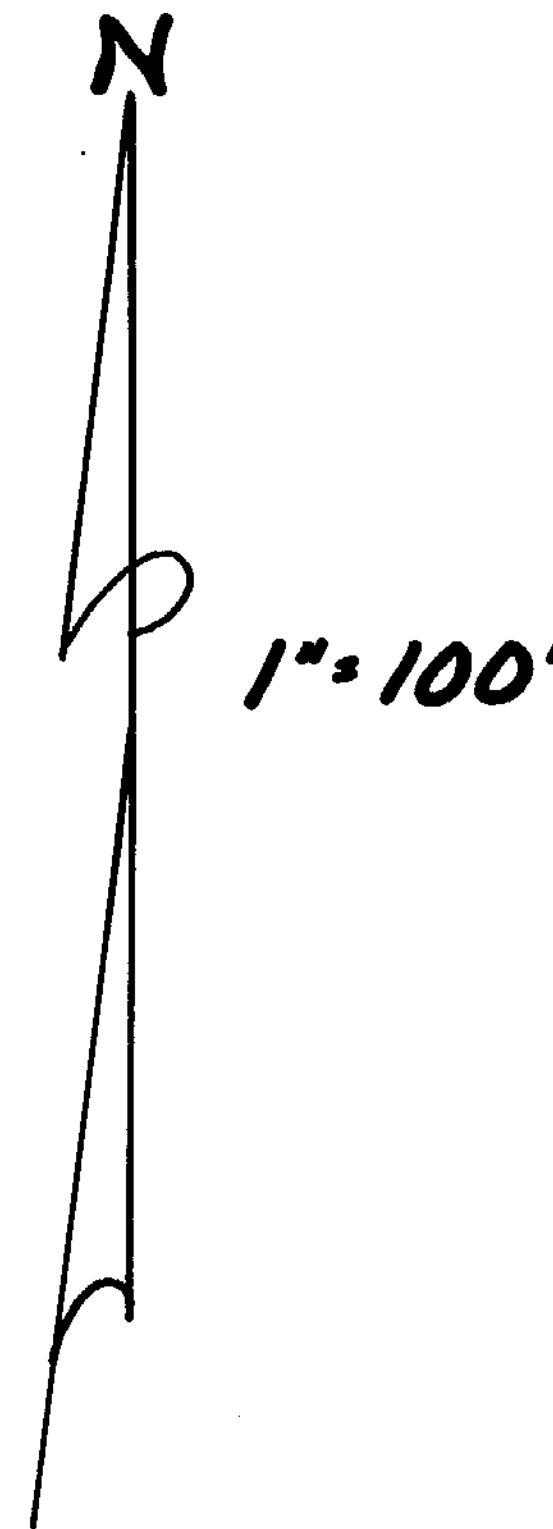
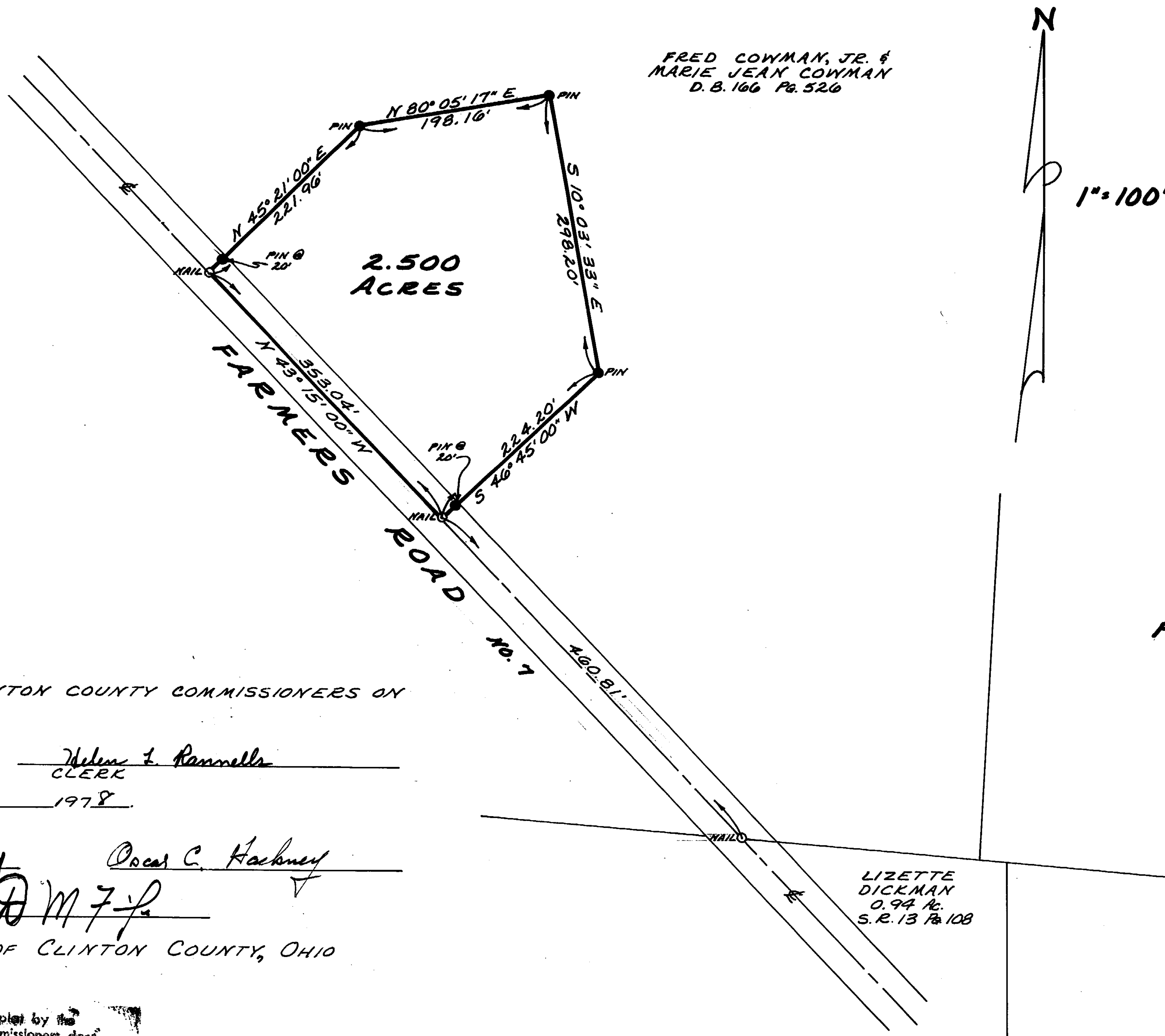
SCALE 1"=100'

DEED REFERENCE

DEED BOOK 166 PAGE 526

TOWNSHIP Washington

MILITARY SURVEY No. 2388



SURVEY PLAT OF
PART OF FRED COWMAN, JR. LANDS

SITUATED IN
MILITARY SURVEY No. 2388
WASHINGTON TOWNSHIP
CLINTON COUNTY, OHIO

RECEIVED BY THE CLINTON COUNTY COMMISSIONERS ON
9-1-1978

Helen L. Rannells
CLERK

APPROVED ON 9-1-1978

David E. Bailey Oscar C. Hackney

D M 7/8

COMMISSIONERS OF CLINTON COUNTY, OHIO

LIZETTE
DICKMAN
O. 94 Ac.
S. R. 13 Pg. 108

The approval of this plat by the
Board of County Commissioners does
not constitute the approval by the
Board of Health, roads or streets, zoning
and the drainage of this subdivision.

APPROVED FOR ACCURACY
Clinton County Engineer
Per R. LOUIS B-50-78

CLINCO
ENGINEERS-SURVEYORS
P.O. Box 281
62 1/2 E. SUGARTREE ST. WILMINGTON, OHIO

SCALE 1"=100'	DRAWN BY CH	CHECKED BY RDE
DATE August 25, 1978	ORIG. C-3780	