

RECEIVED BY THE CLINTON COUNTY COMMISSIONERS
 ON July 18 1980

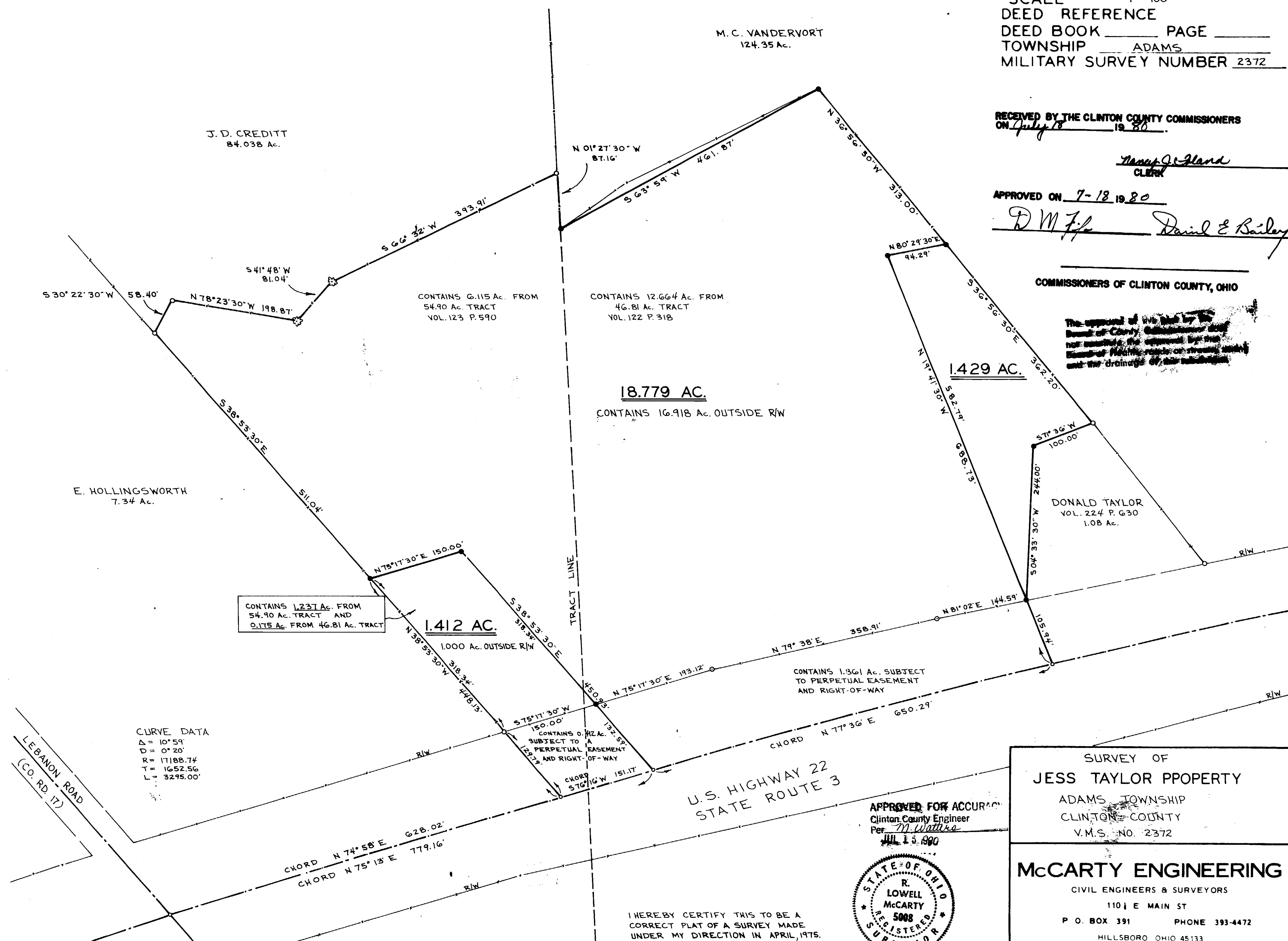
James J. Gland
 CLERK

APPROVED ON 7-18 1980

D.M. Fife Daniel E. Bailey

COMMISSIONERS OF CLINTON COUNTY, OHIO

The approval of this plat by the Board of County Commissioners does not constitute the approval by the Board of Health, roads or drainage, utility and the drainage of this subdivision.



18.779 AC.
 CONTAINS 16.918 AC. OUTSIDE R/W

CONTAINS 1.237 AC. FROM
 54.90 AC. TRACT AND
 0.175 AC. FROM 46.81 AC. TRACT

1.412 AC.
 1.000 AC. OUTSIDE R/W

1.429 AC.

CURVE DATA
 Δ = 10° 59'
 D = 0° 20'
 R = 17188.74
 T = 1652.56
 L = 3295.00'

APPROVED FOR ACCURACY
 Clinton County Engineer
 Per M. Walker
 JUL 18 1980



I HEREBY CERTIFY THIS TO BE A
 CORRECT PLAT OF A SURVEY MADE
 UNDER MY DIRECTION IN APRIL, 1975.

R. Lowell McCarty
 REG. SURVEYOR NO. 5008

SURVEY OF
JESS TAYLOR PROPERTY
 ADAMS TOWNSHIP
 CLINTON COUNTY
 V.M.S. NO. 2372

McCARTY ENGINEERING
 CIVIL ENGINEERS & SURVEYORS
 110 1/2 E MAIN ST
 P. O. BOX 391 PHONE 393-4472
 HILLSBORO OHIO 45133

DATE OCT. 22, 1977 SCALE 1" = 100' DRAWING NO. 75-137B