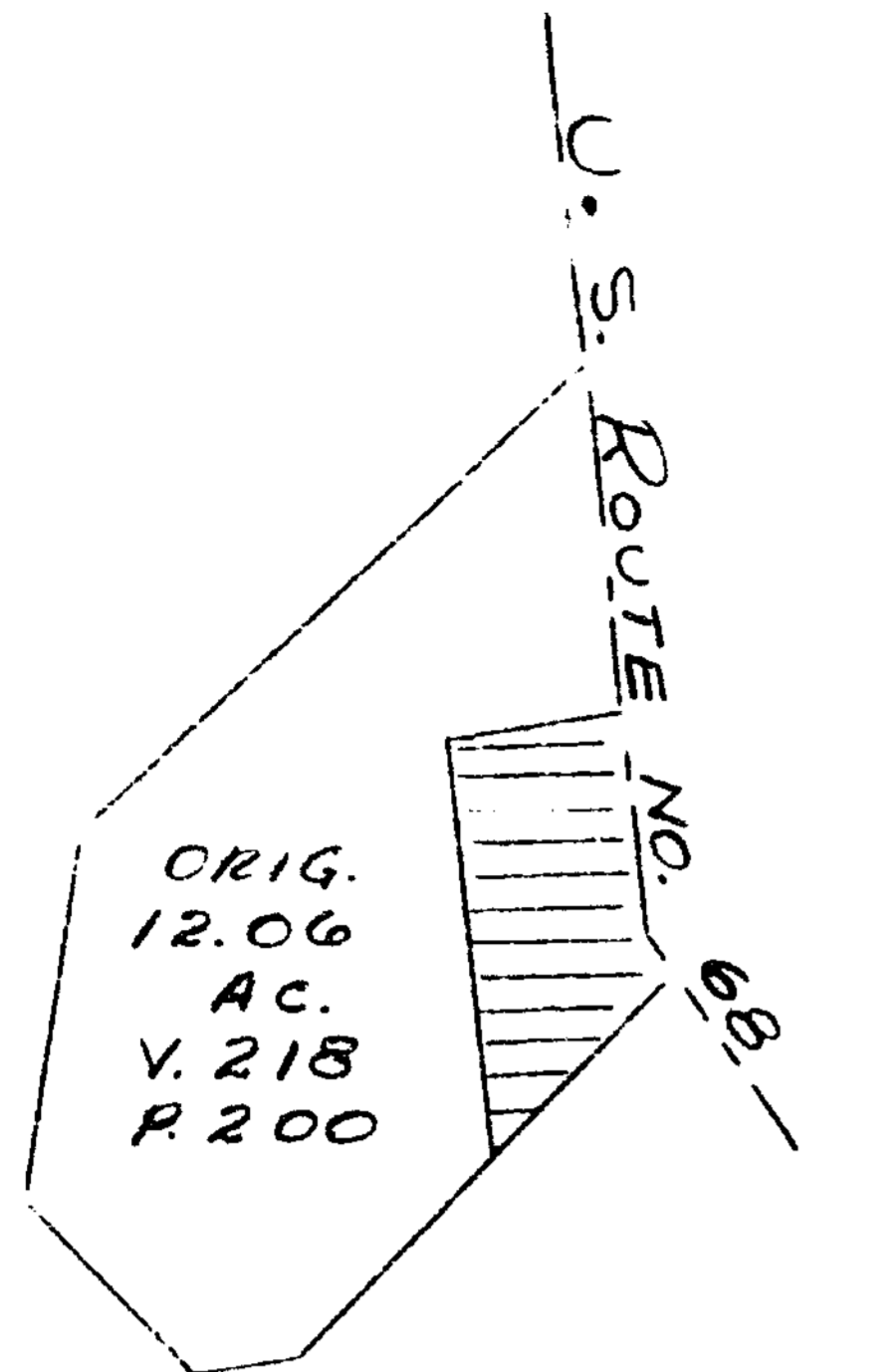
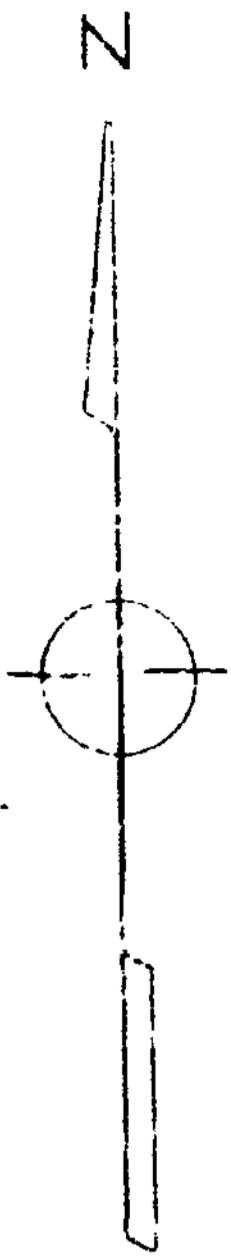


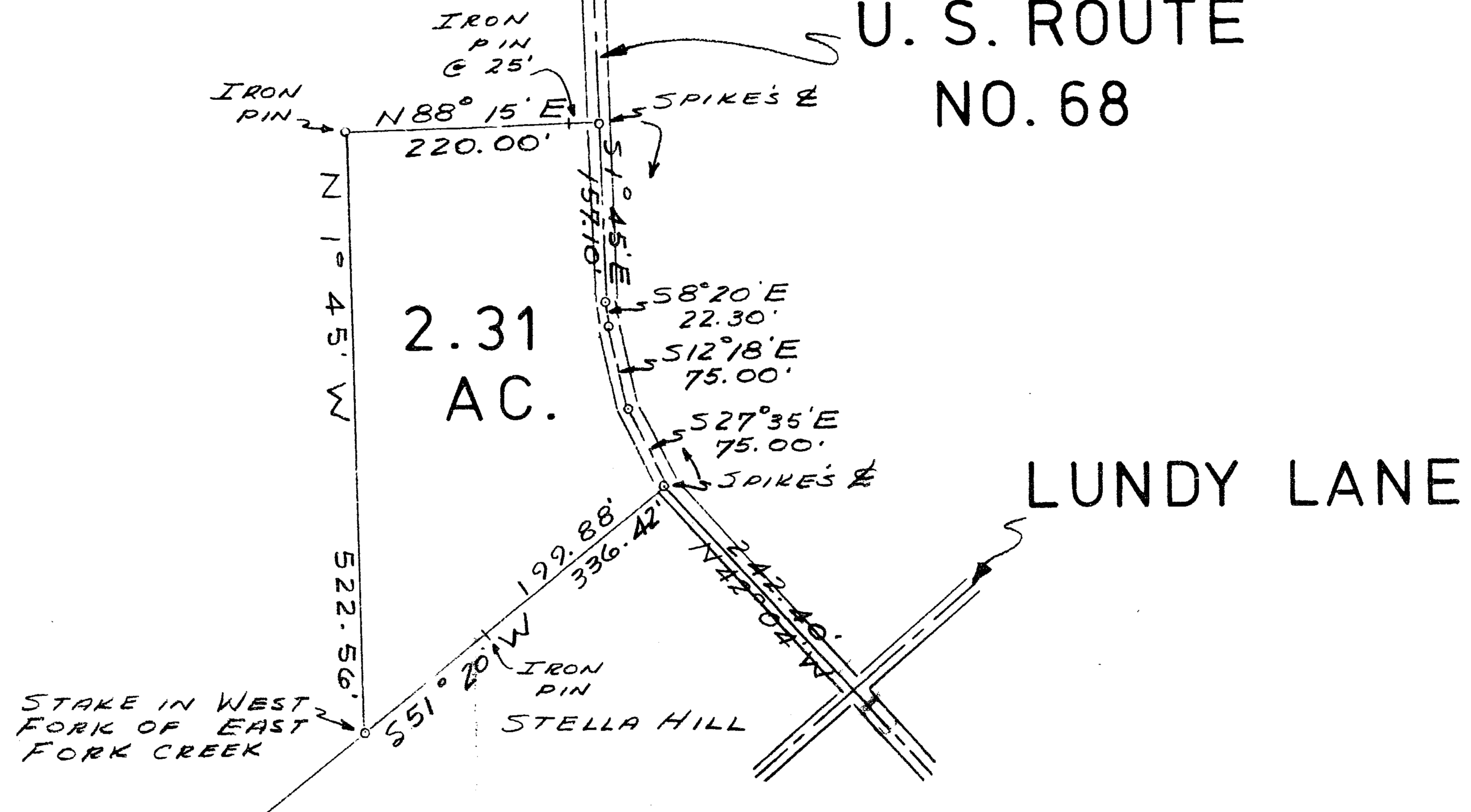
VOLUME 15 PLAT NO. 20
 CLINTON COUNTY ENGINEERS
 RECORD OF LAND DIVISION
 DATE: JULY 17, 1978
 SCALE: 1" = 100'
 TOWNSHIP - JEFFERSON
 M. S. NO. 3045

DEED REFERENCE
 DEED BOOK 218 PAGE 200



DONALD DAY
 ORIG. 12.06 AC.
 V. 218 P. 200

U. S. ROUTE
 NO. 68



APPROVAL
 CLINTON COUNTY COMMISSIONERS

DATE 7-21-78

DATE 7-20-78

DATE 7-31-78

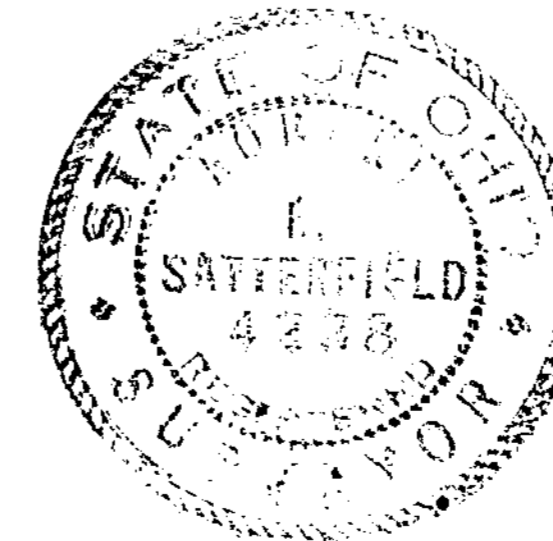
David E. Bailey

Robert C. Satterfield

W. M. F.

The approval of this plat by the Board of County Commissioners does not constitute the approval by the Board of Health, roads or streets, zoning and the drainage of this subdivision.

Robert C. Satterfield
 CIVIL ENGINEER SURVEYOR
 WEST UNION, OHIO



APPROVED FOR ACCURACY
 Clinton County Engineer
 Per. R. LEWIS 7-21-78

SURVEY
 FOR
DONALD DAY
 MILITARY SURVEY NO. 3045
 JEFFERSON TOWNSHIP
 CLINTON COUNTY, OHIO
 SCALE 1" = 100' JULY, 1978