

VOL. 15 PLAT 149

VOLUME 15 PLAT No. 149

CLINTON COUNTY ENGINEER'S
RECORD OF LAND SURVEYS

DATE: March 22, 1979

SCALE: 1" = 200'

DEED REFERENCE:

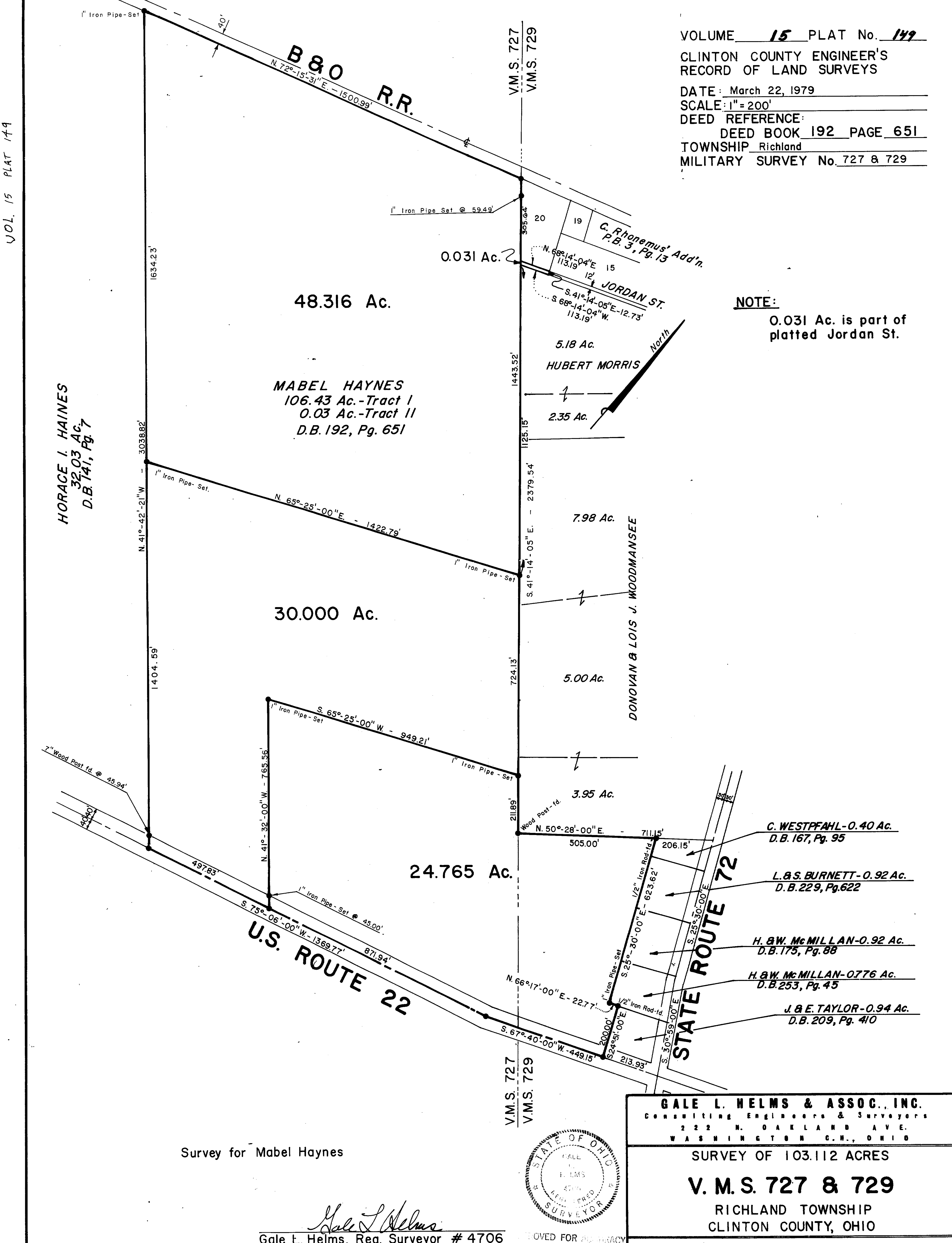
DEED BOOK 192 PAGE 651

TOWNSHIP Richland

MILITARY SURVEY No. 727 & 729

NOTE:

0.031 Ac. is part of
platted Jordan St.



HORACE I. HAINES
32.03 Ac.
D.B. 141, Pg. 7

MABEL HAYNES
106.43 Ac.-Tract I
0.03 Ac.-Tract II
D.B. 192, Pg. 651

HUBERT MORRIS

DONOVAN & LOIS J. WOODMANSEE

C. WESTPFAHL-0.40 Ac.
D.B. 167, Pg. 95

L. & S. BURNETT-0.92 Ac.
D.B. 229, Pg. 622

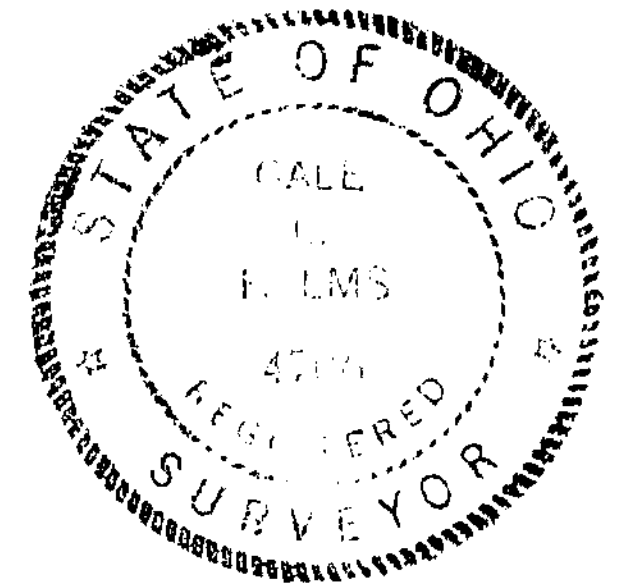
H. & W. McMILLAN-0.92 Ac.
D.B. 175, Pg. 88

H. & W. McMILLAN-0.776 Ac.
D.B. 253, Pg. 45

J. & E. TAYLOR-0.94 Ac.
D.B. 209, Pg. 410

Survey for Mabel Haynes

Gale L. Helms
Gale L. Helms, Reg. Surveyor # 4706



GALE L. HELMS & ASSOC., INC.
Consulting Engineers & Surveyors
222 N. OAKLAND AVE.
WASHINGTON C.H., OHIO

SURVEY OF 103.112 ACRES
V. M. S. 727 & 729
RICHLAND TOWNSHIP
CLINTON COUNTY, OHIO

March 22, 1979

Scale: 1" = 200'