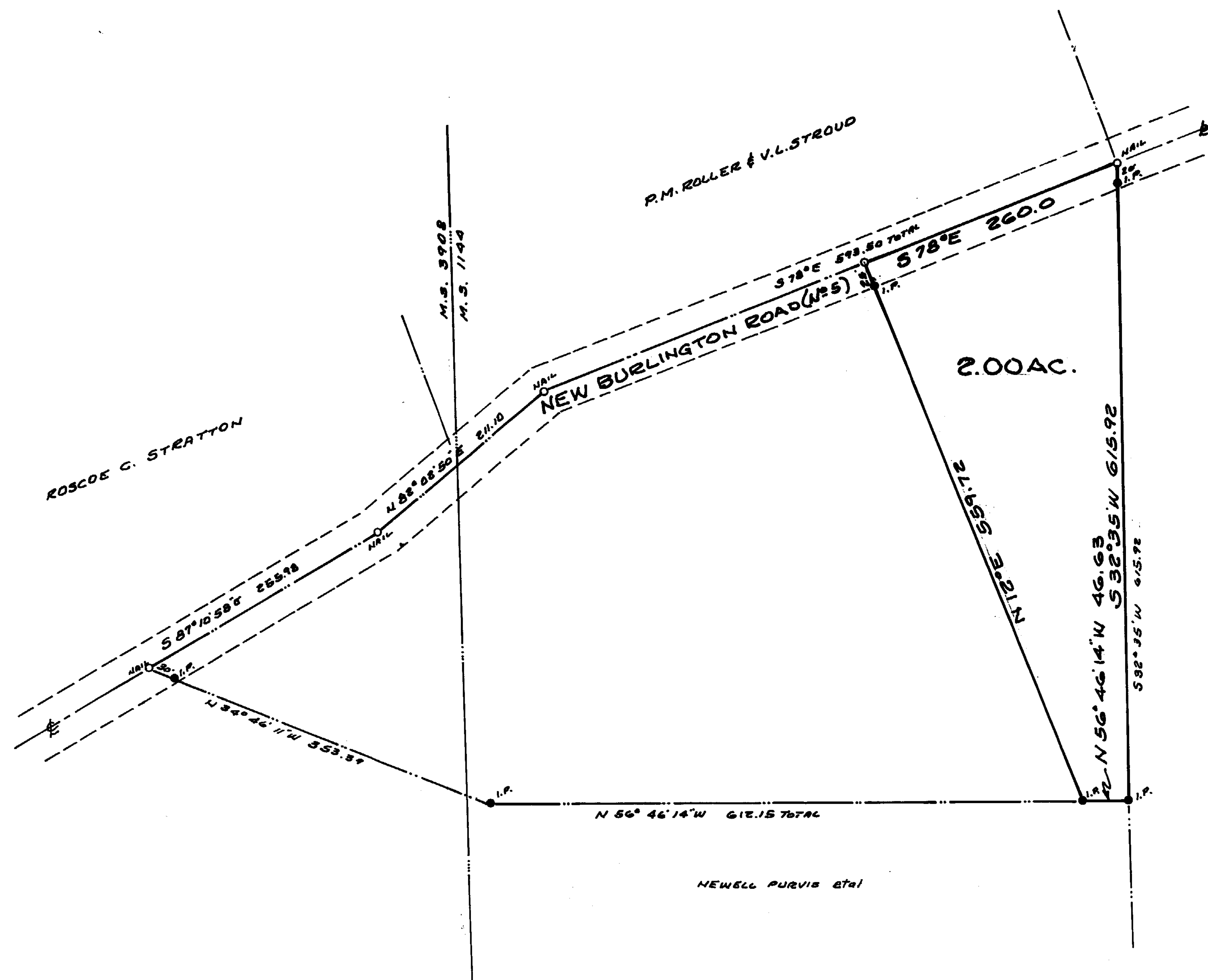


CLINTON COUNTY ENGINEER'S
RECORD OF LAND DIVISION

VOL. 15 PLAT No 139
DATE 3-31-79
SCALE 1"=100'

DEED REFERENCE

DEED BOOK PAGE
TOWNSHIP - CHESTER
MILITARY SURVEY 1144



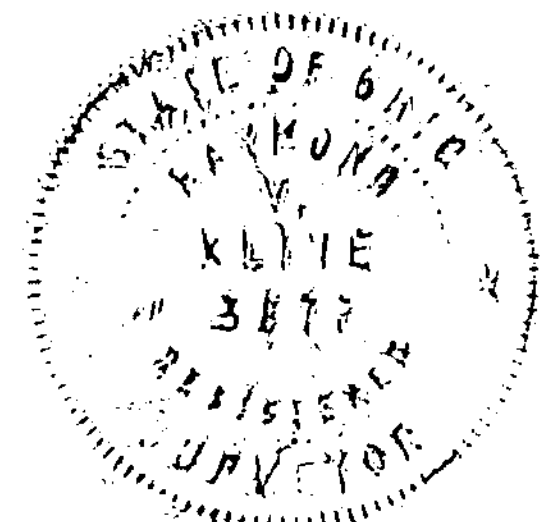
G.L. & K.M. JOHNSON
D.B. 253, P. 254
S.E. 14, P. 154

SURVEY PLAT OF
PART OF NEWELL PURVIS et al 8.217 AC. TRACT
SITUATED IN
MILITARY SURVEY 1144
CHESTER TOWNSHIP
CLINTON COUNTY, OHIO

I HEREBY CERTIFY THIS TO BE A CORRECT PLAT OF A SURVEY
MADE UNDER MY DIRECTION IN MARCH 1979

County Commissioners
4-27-79 *Orval C. Haskins*
4-27-79 *DMF*
4-27-79 *David E. Bailey*

Raymond V. Kline
REGISTERED SURVEYOR OHIO No 3877



The approval of this plat by the Board of County Commissioners does not constitute the approval by the Board of Health, roads or streets, zoning and the drainage of this subdivision.

APPROVED FOR ACCURACY
Clinton County Engineer
Per *E. Lewis* 4-27-79

KLINE ENGINEERING
83 SPRING STREET
XENIA, OHIO 45385

SCALE 1"=100'	DRAWN BY R.V.K.	CHECKED BY R.V.E.
DATE MARCH 31, 1979		