

**CLINTON COUNTY ENGINEERS
RECORD OF LAND DIVISION**

VOLUME 15 PLAT NO. 117
DATE 2-20-79
SCALE 1"=50'

DEED REFERENCE

DEED BOOK 254 PAGE 30
TOWNSHIP Richland
MILITARY SURVEY NO. 727

RECEIVED BY THE CLINTON COUNTY COMMISSIONERS ON 2-23 1979.

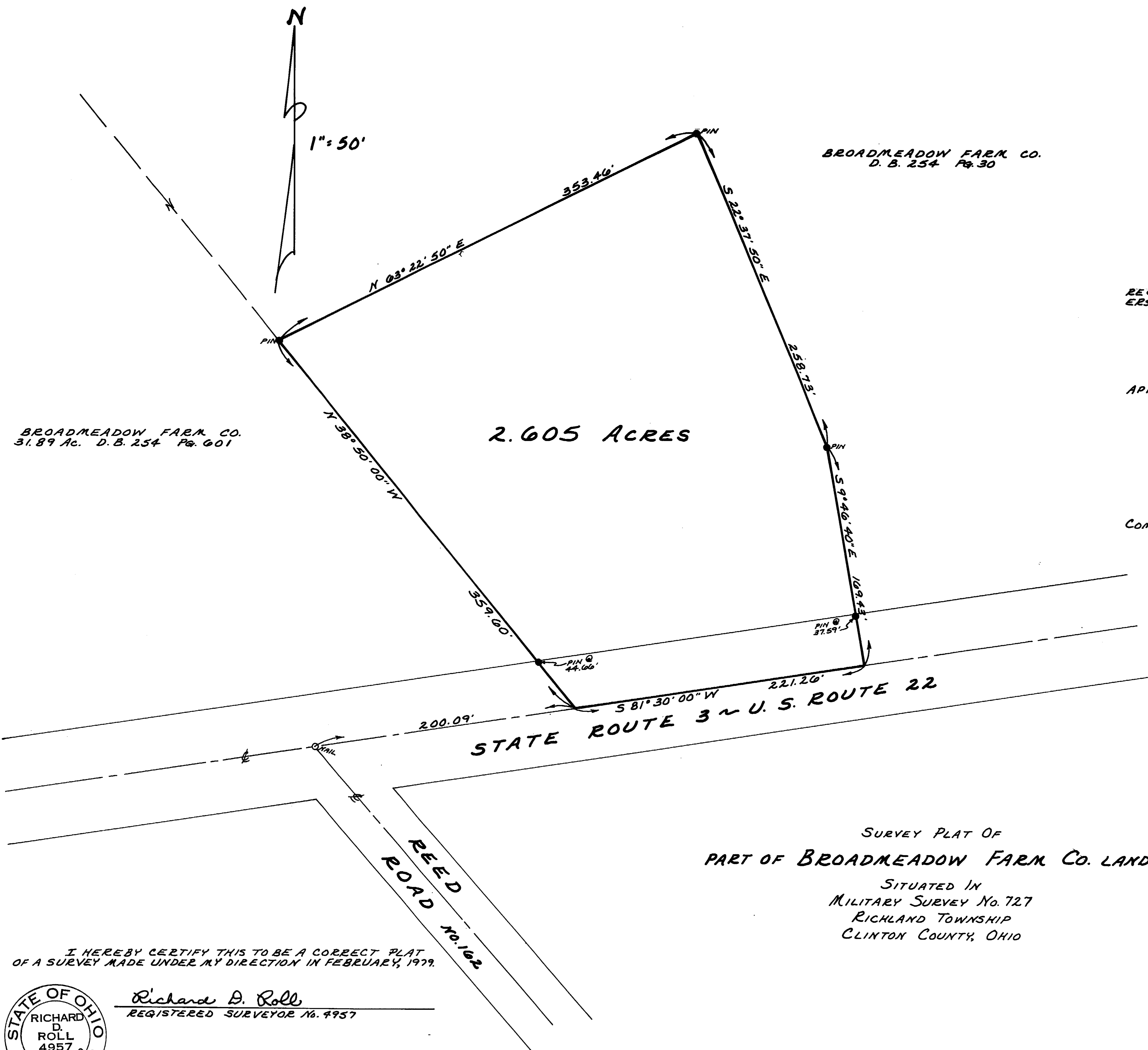
Walter L. Rannells
CLERK

APPROVED ON 2-23 1979.

Orval C. Harkness
Daniel E. Bailey

COMMISSIONERS OF CLINTON COUNTY, OHIO

The approval of this plat by the Board of County Commissioners does not constitute the approval by the Board of Health, roads or streets, zoning and the drainage of this subdivision.



BROADMEADOW FARM CO.
31.89 AC. D.B. 254 Pg. 601

BROADMEADOW FARM CO.
D.B. 254 Pg. 30

2.605 ACRES

STATE ROUTE 3 ~ U.S. ROUTE 22

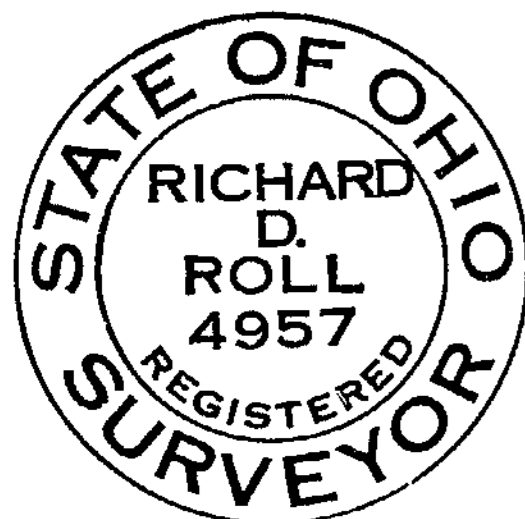
REED ROAD No. 102

SURVEY PLAT OF
PART OF BROADMEADOW FARM CO. LANDS

SITUATED IN
MILITARY SURVEY No. 727
RICHLAND TOWNSHIP
CLINTON COUNTY, OHIO

I HEREBY CERTIFY THIS TO BE A CORRECT PLAT OF A SURVEY MADE UNDER MY DIRECTION IN FEBRUARY, 1979.

Richard D. Roll
REGISTERED SURVEYOR No. 4957



APPROVED FOR ACCURACY
Clinton County Engineer
Per W. Haines

FEB 21 1979

CLINCO
ENGINEERS-SURVEYORS
P.O. Box 241

62 1/2 E. SUGARTREE ST. WILMINGTON, OHIO

| | | |
|---------------------------|-----------------|-------------------|
| SCALE 1"=50' | DRAWN BY CLY | CHECKED BY RDR |
| DATE February 20, 1979 | DEWG. C-3843 | |