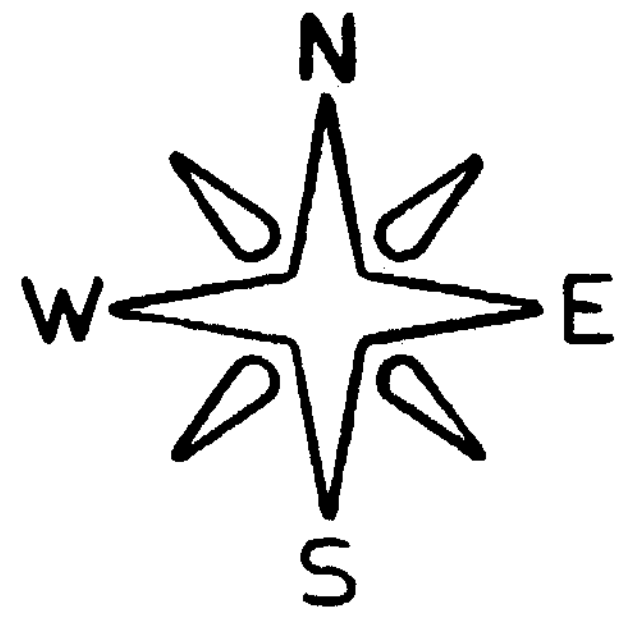
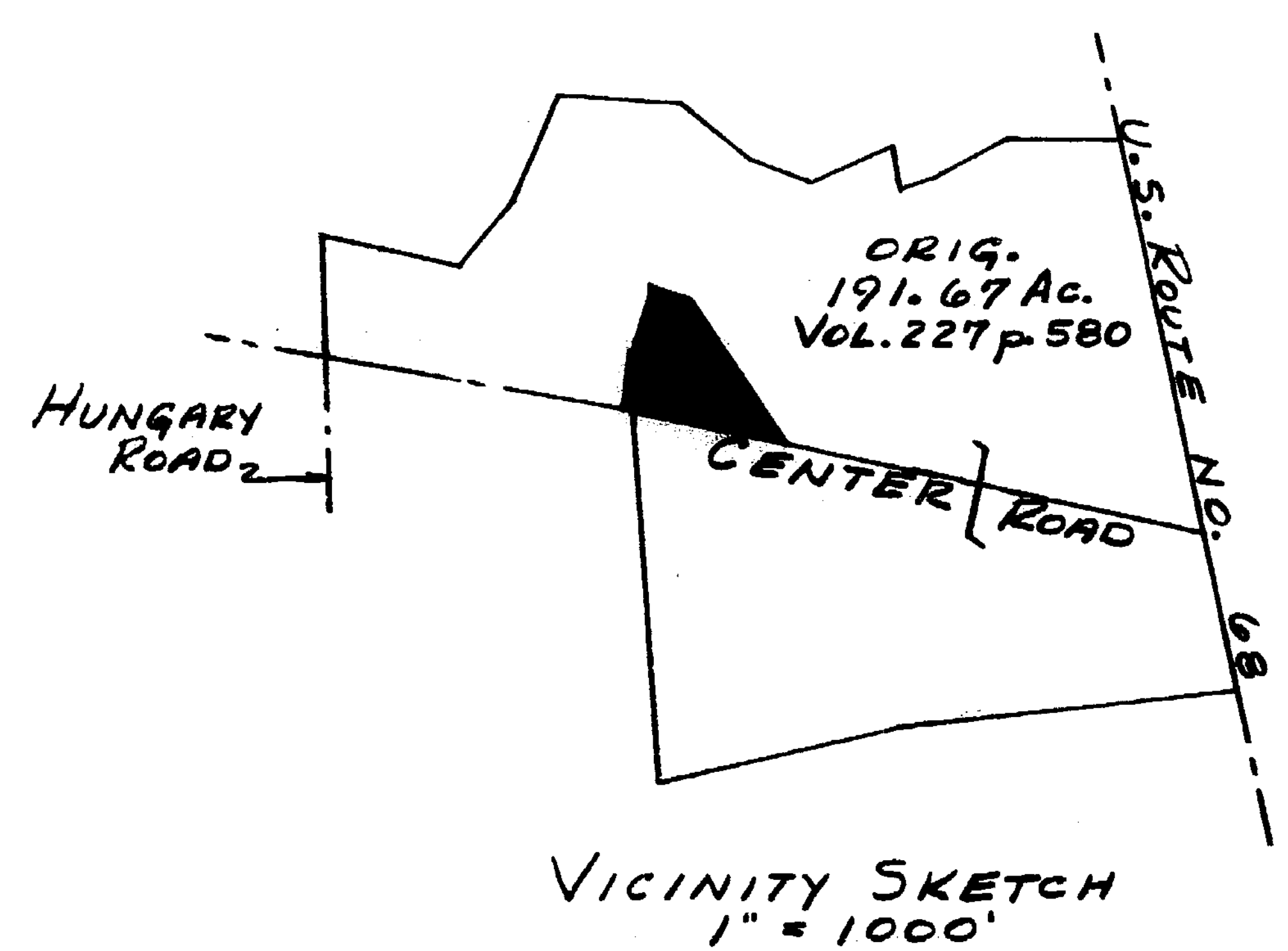
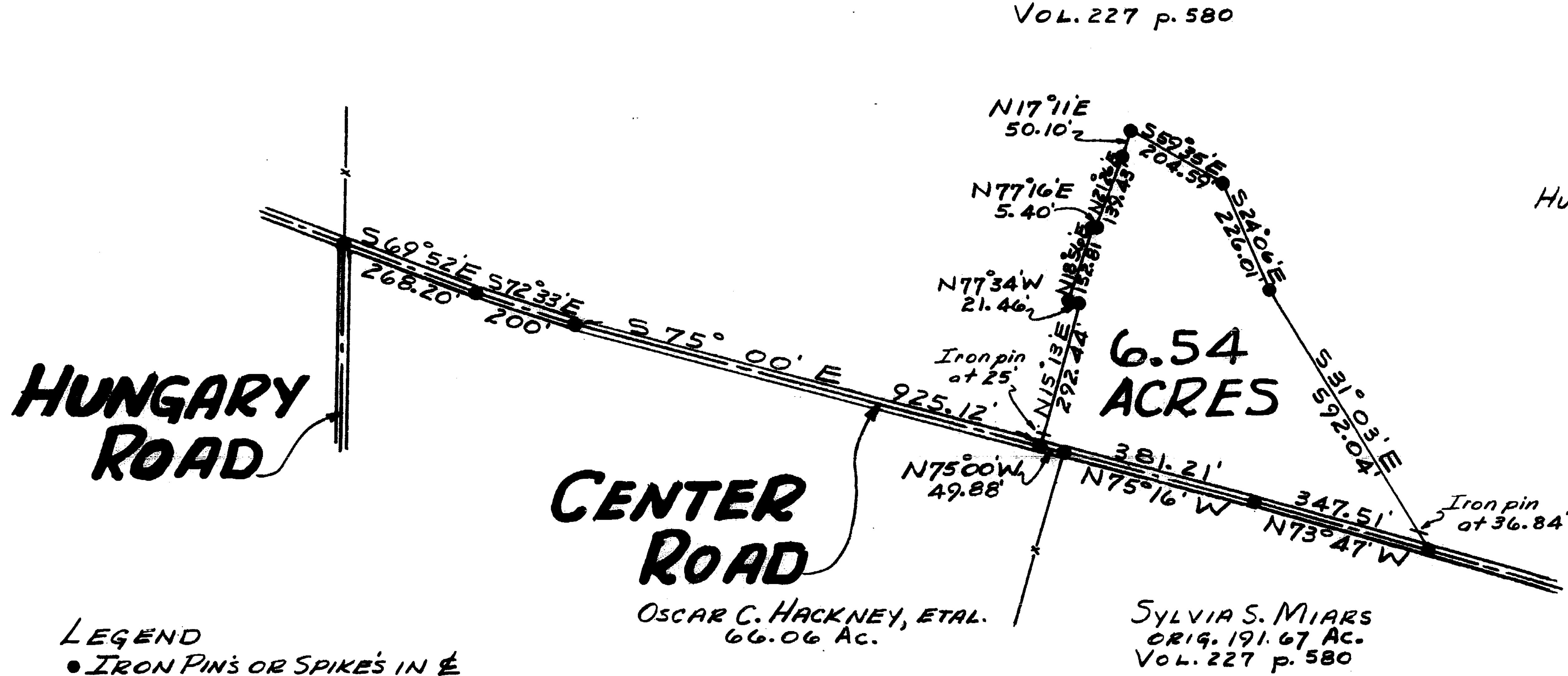


VOLUME 11 PLAT No. 6
 CLINTON COUNTY ENGINEERS
 RECORD OF LAND DIVISION
 DATE DECEMBER 15, 1975
 SCALE: 1" = 200'
 DEED REFERENCE
 DEED BOOK 227 PAGE 580
 TOWNSHIP UNION
 MILITARY SURVEY No. 523



Sylvia S. MIARS
 ORIG. 191.67 Ac.
 VOL. 227 p. 580



LEGEND
 ● IRON PINS OR SPIKES IN ϵ

APPROVAL
 CLINTON COUNTY COMMISSIONERS

DATE _____

DATE _____

DATE _____

Robert E. Satterfield
 CIVIL ENGINEER, SURVEYOR
 WEST UNION, OHIO



APPROVED FOR TRANSFER
 Clinton County Engineer
 For *R. Lewis* 12-29-75

SURVEY
 FOR
Sylvia S. MIARS
 MILITARY SURVEY NO. 523
 UNION TOWNSHIP
 CLINTON COUNTY, OHIO
 SCALE 1" = 200' DECEMBER, 1975