

VOLUME 14 PLAT NO. 35  
 CLINTON COUNTY ENGINEERS  
 RECORD OF LAND SURVEYS  
 DATE: March 5, 1976  
 SCALE: 1"=50'  
 DEED REFERENCE  
 DEED BOOK 203 PAGE 358  
 CITY OF WILMINGTON  
 MILITARY SURVEY NO. 2471



American Modulars Corp.  
 5.226 Ac. (revised to 4.986 Ac.)  
 D.B. 239, Pg. 674

Approved: Clinton County Commissioners  
 Date: 4-2-76

*D M J P*  
 Daniel E. Bailey

Tract	-	5.8085 Ac.
R/W	-	0.3814 Ac.
Total	-	6.1899 Ac.

Approved: City Council, City of Wilmington, Ohio  
 Date: 4-20-76

*Robert W. Moyer, CHM.*

**DEED REFERENCE:**

Developers Diversified, Ltd. - 6.9740 Ac.  
 Deed Book , Pg.

**DEED REFERENCE:**

The Zenith Holding & Trading Corp. - Orig. 15.872 Ac.  
 Deed Book 203, Pg. 358.  
 State of Ohio - R/W Easement - U.S.E. 68  
 4.694 Ac. - Record of Easements, Vol. 2, Pg. 167  
 Lots 219 thru 223, Southridge Sub'n., Sec. 9-C  
 replatted to Gibraltar Plat No. 1, Lots 1 thru 6.

APPROVED FOR TRANSFER  
 Clinton County Engineer  
 Per *J. Smith* 4-2-76

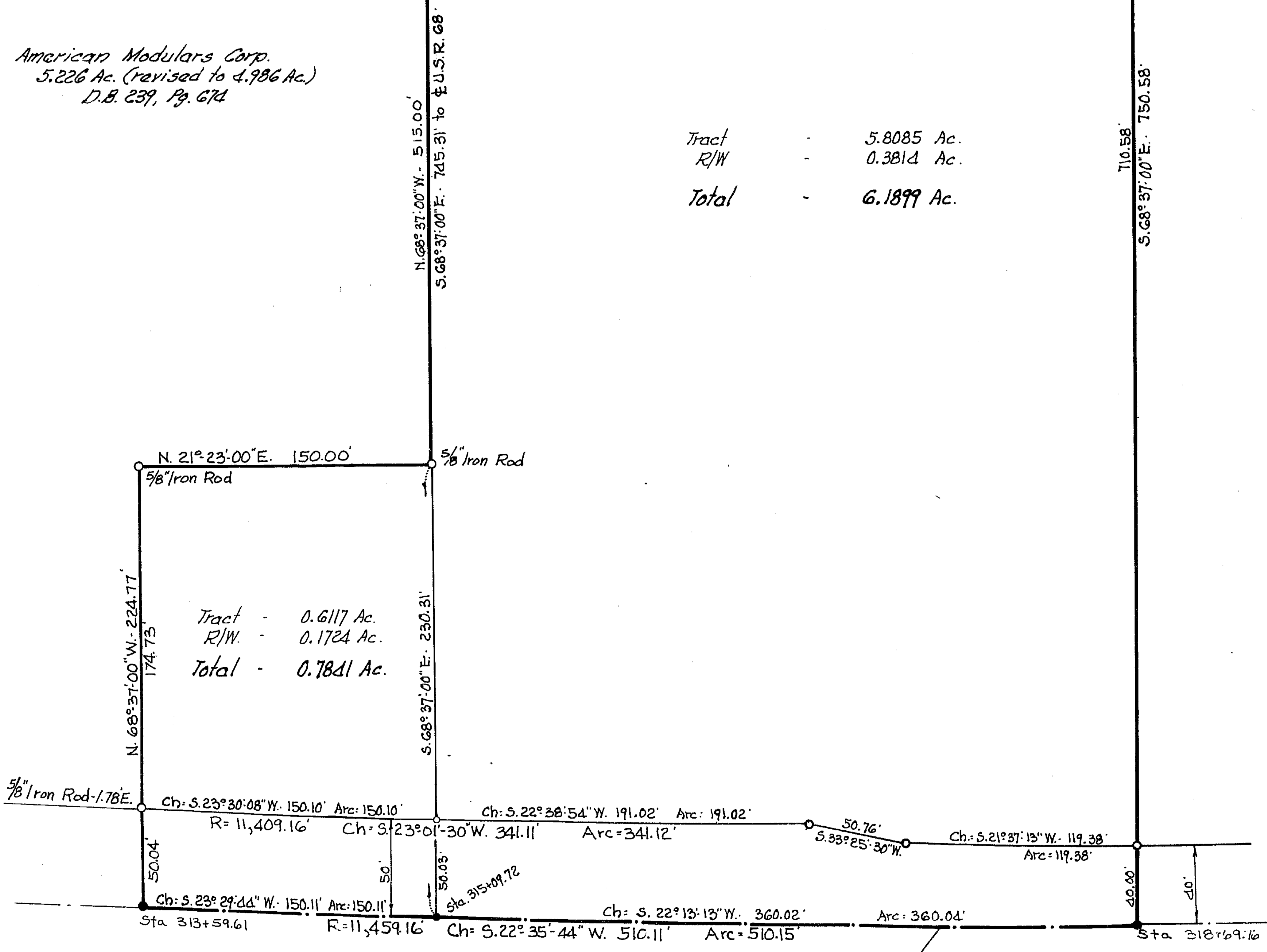
Note:  
 1" Iron Pipes shown thus: o

**GALE L. HELMS & ASSOC., INC.**  
 Consulting Engineers & Surveyors  
 222 N. OAKLAND AVE.  
 WASHINGTON C.H., OHIO

**SURVEY OF 6.9740 ACRES**  
**V.M.S. 2471**

CITY OF WILMINGTON  
 CLINTON COUNTY, OHIO

Jan. 9, 1976 Rev. 1/20/76 Rev. 3/12/76  
Rev. 2/6/76 Rev. 4/2/76  
Rev. 3/31/76 Scale: 1"=50'



**U.S. ROUTE 68**

**S. SOUTH ST.**

**S.R. 134**