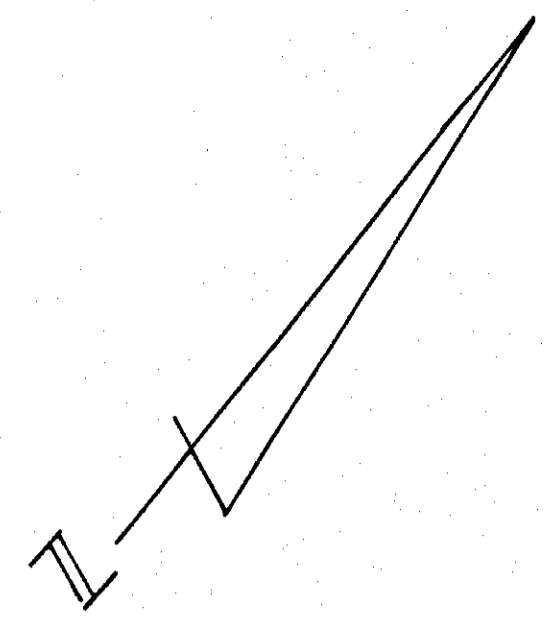
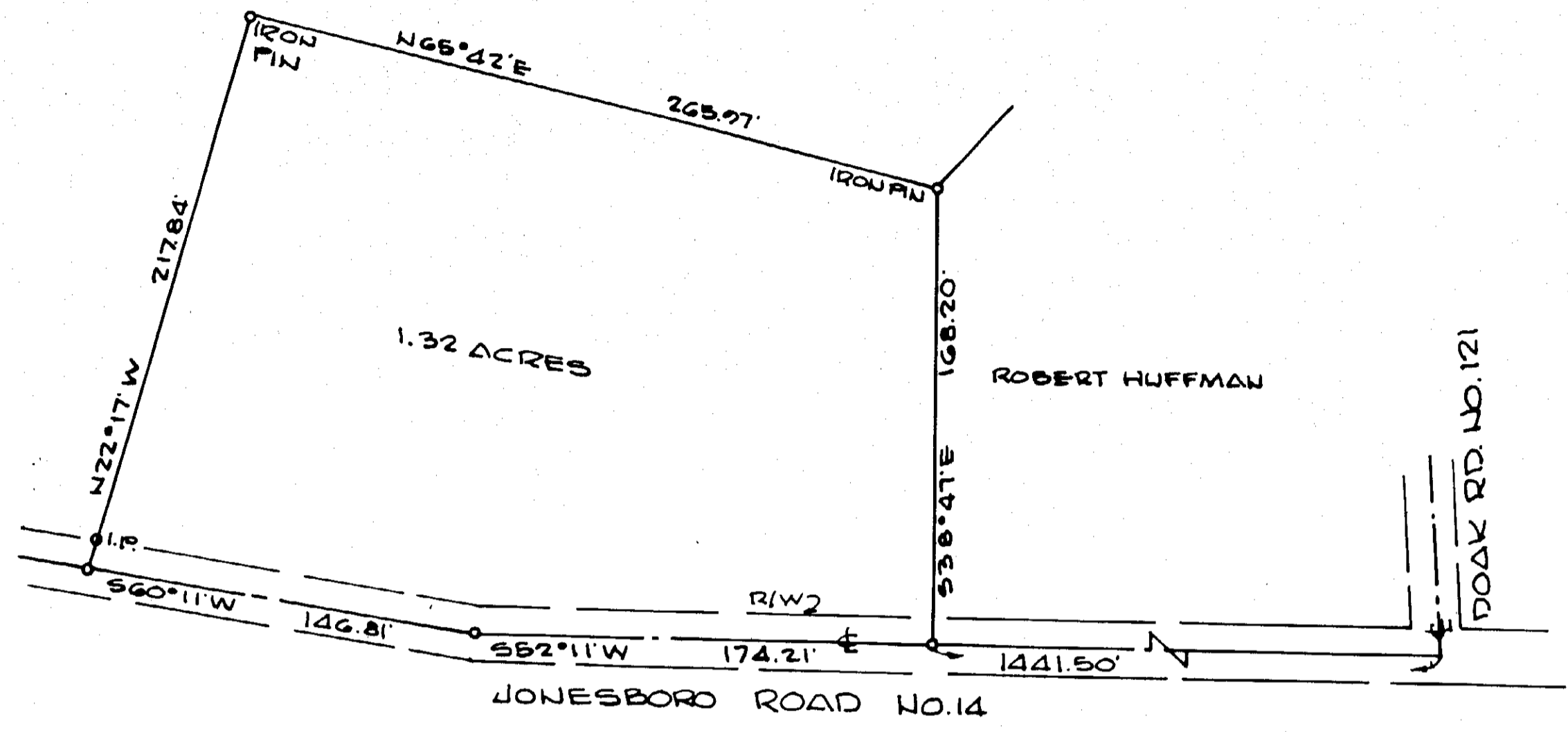


VOLUME 14 PLAT NO. 269
 CLINTON COUNTY ENGINEER'S
 RECORD OF LAND DIVISION
 DATE 6-30-77
 SCALE 1"=50'
 DEED REFERENCE
 DEED BOOK 228 PAGE 127
 TOWNSHIP JEFFERSON
 MILITARY SURVEY NO. 688



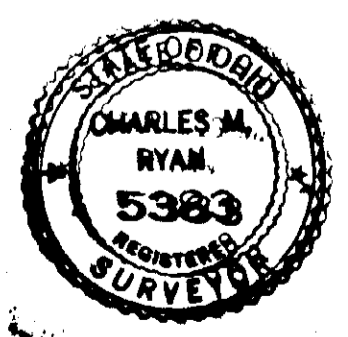
STELSON REED
 55.0 AC. TR.



APPROVED BY THE CLINTON COUNTY COMMISSIONERS

1-1-77 DMF
 DATE
 7-1-77 David E. Bailey
 DATE
 7-1-77 Charles C. Hackney
 DATE

Charles M. Ryan



APPROVED FOR ACCURACY
 Clinton County Engineer
P. Smith 7-1-77

SURVEY FOR STELSON REED
 BY
 CHARLES M. RYAN
 BOX 312 HILLSBORO, O.

DATE 6-30-77 SCALE 1"=50'