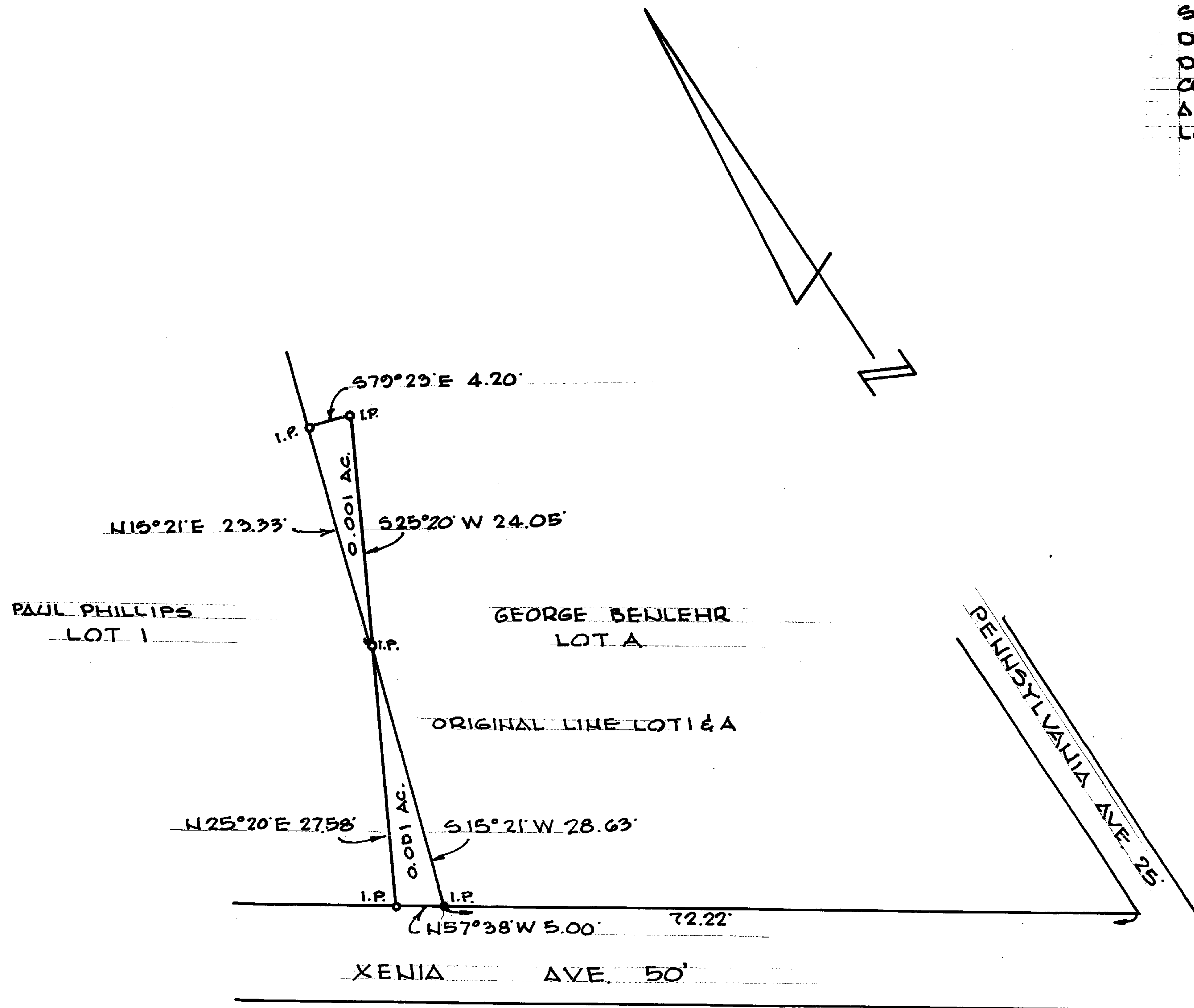


VOLUME 14 PLAT NO. 17
 CLINTON COUNTY ENGINEERS
 RECORD OF TOWN LOTS
 DATE: 2-1-78
 SCALE: 1"=100'
 DEED REFERENCE
 DEED BOOK PAGE
 CORPORATION WILMINGTON
 ADDITION SCOTT'S
 LOT NO. PART OF LAND PART OF A



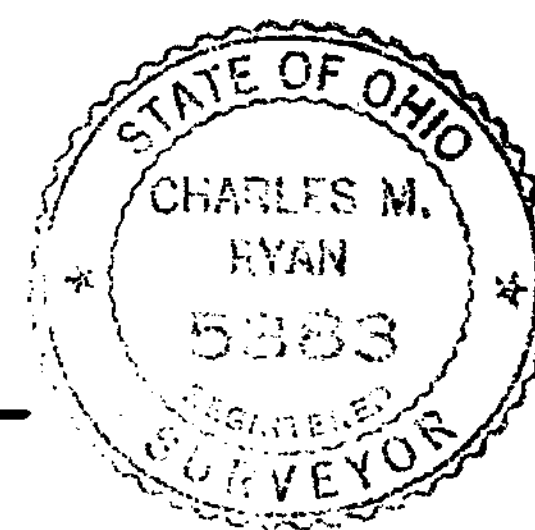
- LEGEND
- IRON PIN SET
 - IRON PIN FOUND

APPROVAL

CITY PLANNING COMMISSION

DATE DIRECTOR

Charles M. Ryan



APPROVED FOR TRANSFER
 Clinton County Engineer
 Per R. Lewis 2-9-78

SURVEY FOR	
PAUL PHILLIPS AND	
GEORGE BENLEHR	
DATE: 2-1-78	SCALE: 1"=10.0'