

SURVEY PLAT OF  
**GLEN C. BRANDON LANDS**  
 MILITARY SURVEYS No. 625 & No. 996  
 UNION & WASHINGTON TOWNSHIPS  
 CLINTON COUNTY, OHIO  
 FOR  
 CASTLETON FARM OF OHIO, INC.

I HEREBY CERTIFY THIS TO BE A CORRECT  
 PLAT OF A SURVEY MADE UNDER MY DIRECTION  
 IN DECEMBER, 1976.

Richard D. Roll  
 REGISTERED SURVEYOR NO. 4957



HOWARD SEWELL JR. &  
 JANET C. SEWELL  
 250.17 Ac.  
 D.B. 249 PG. 75

CHARLES W. LAY  
 20.05 Ac.  
 D.B. 251 PG. 356

JOHN W. & HELEN J. MORRIS  
 4,997 Ac.  
 D.B. 252 PG. 203  
 S.P. 14 PG. 114

OTTIE E. &  
 HAZEL W. GRIFFITH  
 62.25 Ac.  
 D.B. 173 PG. 590

EDWARD R. &  
 EDITH B. HOUSTON  
 108.00 Ac.  
 D.B. 237 PG. 530

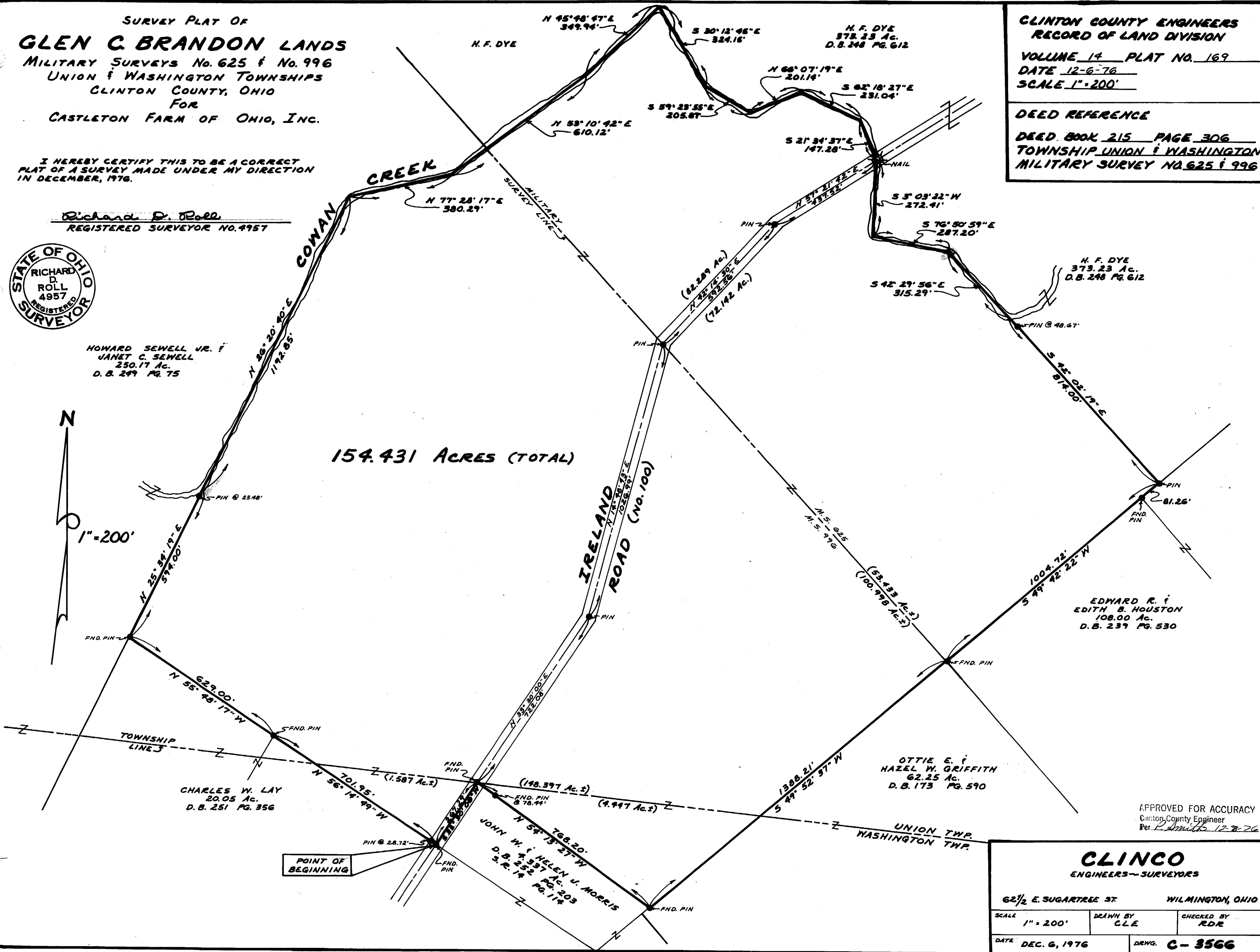
H. F. DYE  
 373.23 Ac.  
 D.B. 248 PG. 612

H. F. DYE  
 373.23 Ac.  
 D.B. 248 PG. 612

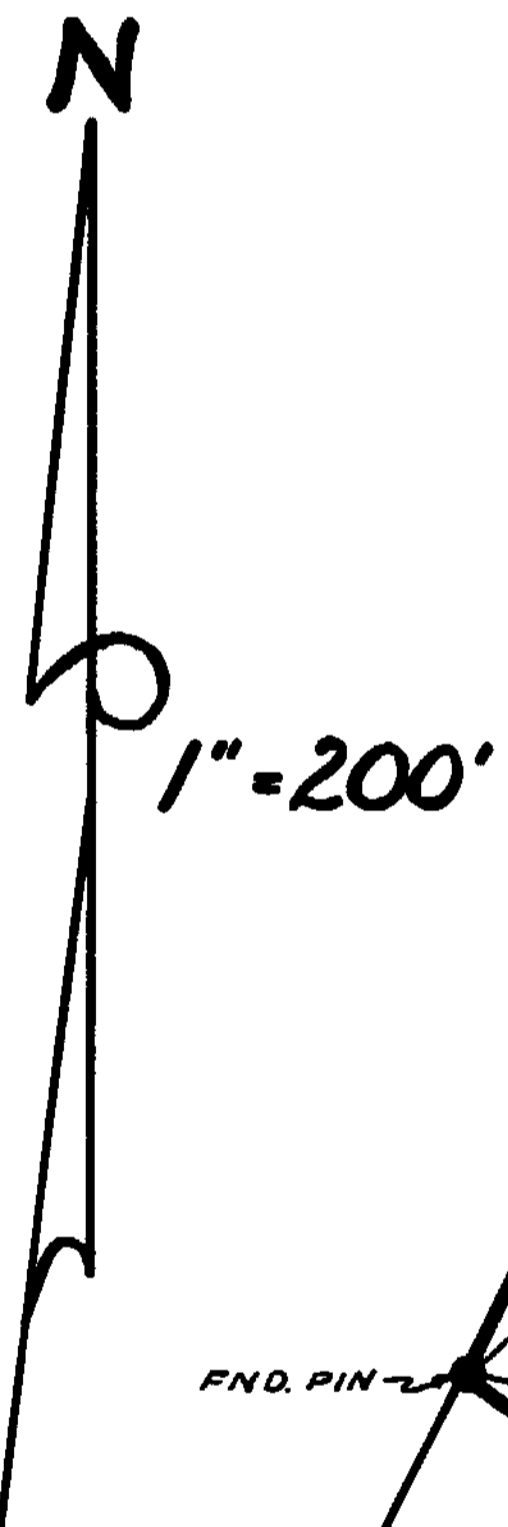
CLINTON COUNTY ENGINEERS  
 RECORD OF LAND DIVISION

VOLUME 14 PLAT NO. 169  
 DATE 12-6-76  
 SCALE 1"=200'

DEED REFERENCE  
 DEED BOOK 215 PAGE 306  
 TOWNSHIP UNION & WASHINGTON  
 MILITARY SURVEY NO. 625 & 996



154.431 ACRES (TOTAL)



APPROVED FOR ACCURACY  
 Clinton County Engineer  
 Per: R. Smith 12-8-76

**CLINCO**  
 ENGINEERS-SURVEYORS

62 1/2 E. SUGARTREE ST WILMINGTON, OHIO

SCALE 1" = 200'	DRAWN BY C.L.E.	CHECKED BY R.D.R.
DATE DEC. 6, 1976	DRWG. C-3566	