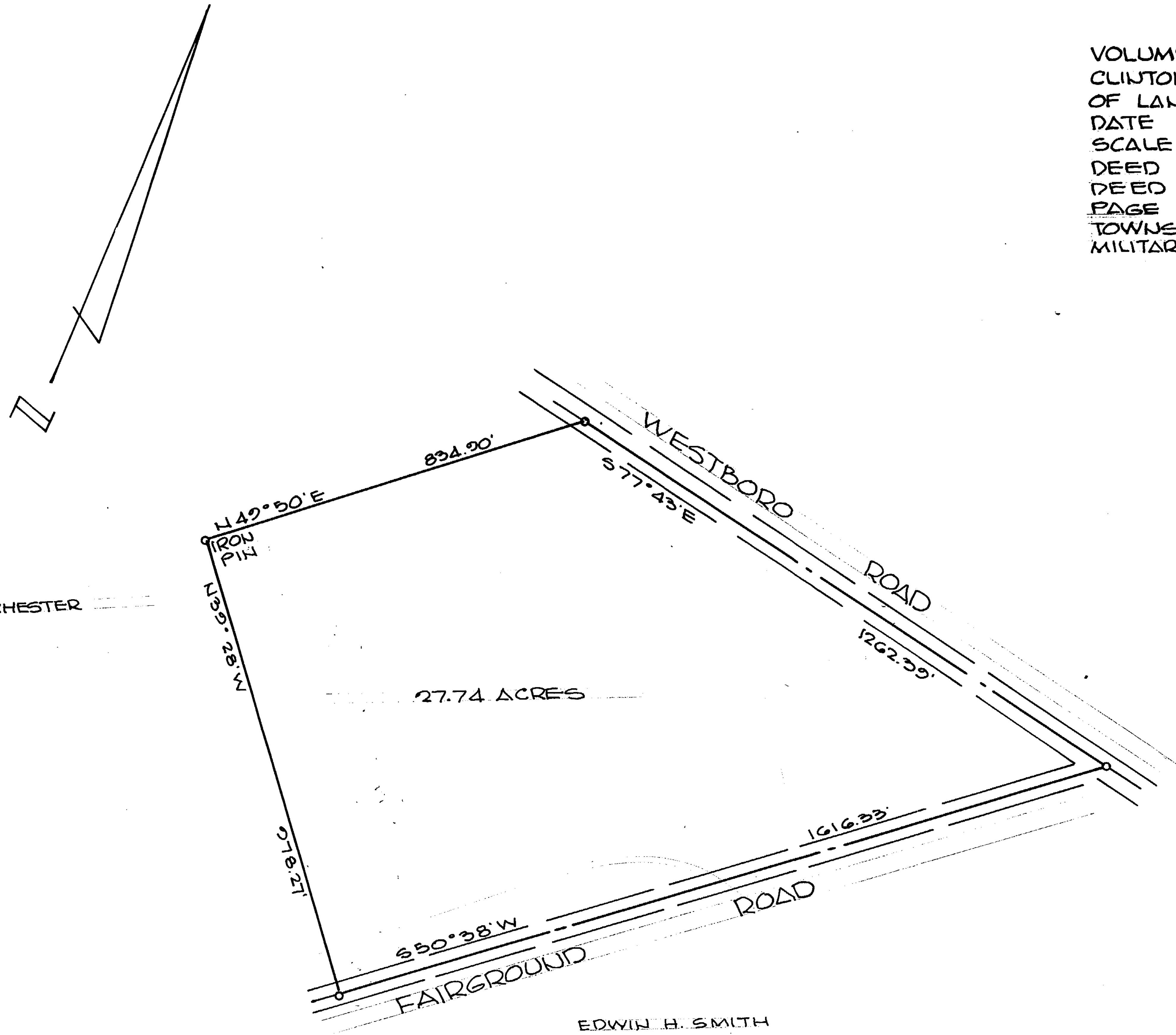


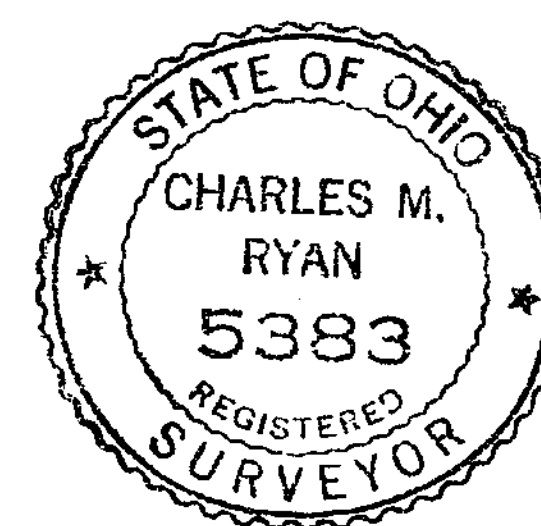
VOLUME 14 PLAT NO. 129  
 CLINTON COUNTY ENGINEERS RECORD  
 OF LAND DIVISION  
 DATE 9-10-76  
 SCALE 1" = 200'  
 DEED REFERENCE  
 DEED BOOK 224  
 PAGE 121  
 TOWNSHIP MARION  
 MILITARY SURVEY NO. 1121

VILLAGE OF BLANCHESTER



27.74 ACRES

EDWIN H. SMITH  
 22.00 ACRES  
 VOL. 224 P. 121



*Charles M. Ryan*

PROVED FOR ACCURACY  
 Clinton County Engineer  
 Per *E. Smith* 9-24-76

SURVEY FOR EDWIN H. SMITH

BY  
 CHARLES M. RYAN  
 BOX 312 HILLSBORO, O.

DATE 9-10-76 SCALE 1" = 200'