

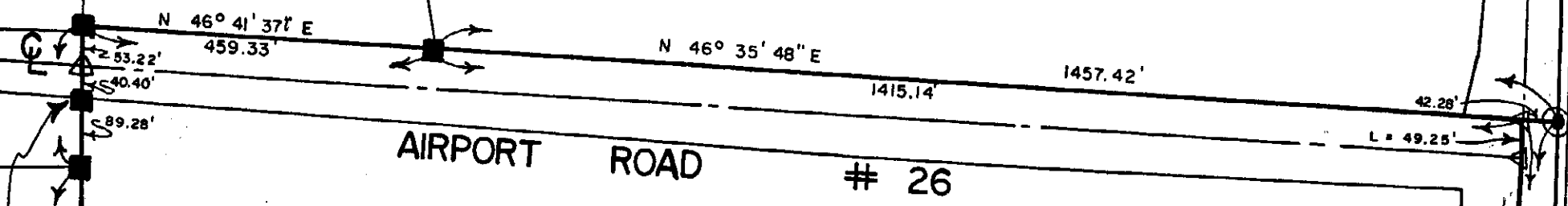
GREAT OAKS JOINT VOCATIONAL SCHOOL DISTRICT

MARIE H. STEINKOLK, ET AL  
D.B. 174 PG. 200  
MILITARY SURVEY # 1170  
UNION TOWNSHIP  
CLINTON COUNTY, OHIO  
4-22-74

1" = 200'

B. ANTHONY WILLIAMS

SEE PAGE 287



AIRPORT ROAD # 26

N 46° 13' 13" W 182.90'

1843.05'

74.578 ACRES

APPROVED FOR  
MATHEMATICAL ACCURACY  
Clinton County Engineer  
Per *M. Waters* 74578Ac  
NOV 07 1990 12.100Ac.

RICHARD H. MCCOY, ETAL

N 47° 09' 08" W

CH. = S 27° 11' 20" E  
2079.47'

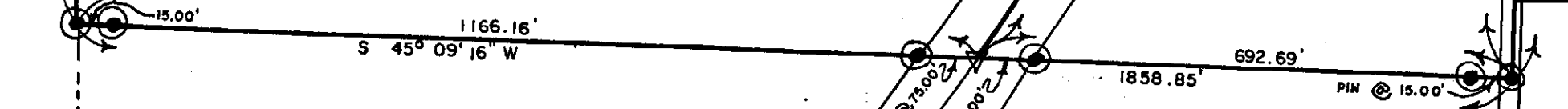
DENVER ROAD # 153

S 45° 27' 48" E

RUFUS E. SUGGS

12.100 AC.

DOAK FARMS INC.  
66.65 AC.



S.R. # 73

P. 287