

- 40.0 TYPICAL ELEV. POINT
- EXISTING TREES
- - - - - SANITARY SEWER
- - - - - WATER LINE
- - - - - GAS LINE

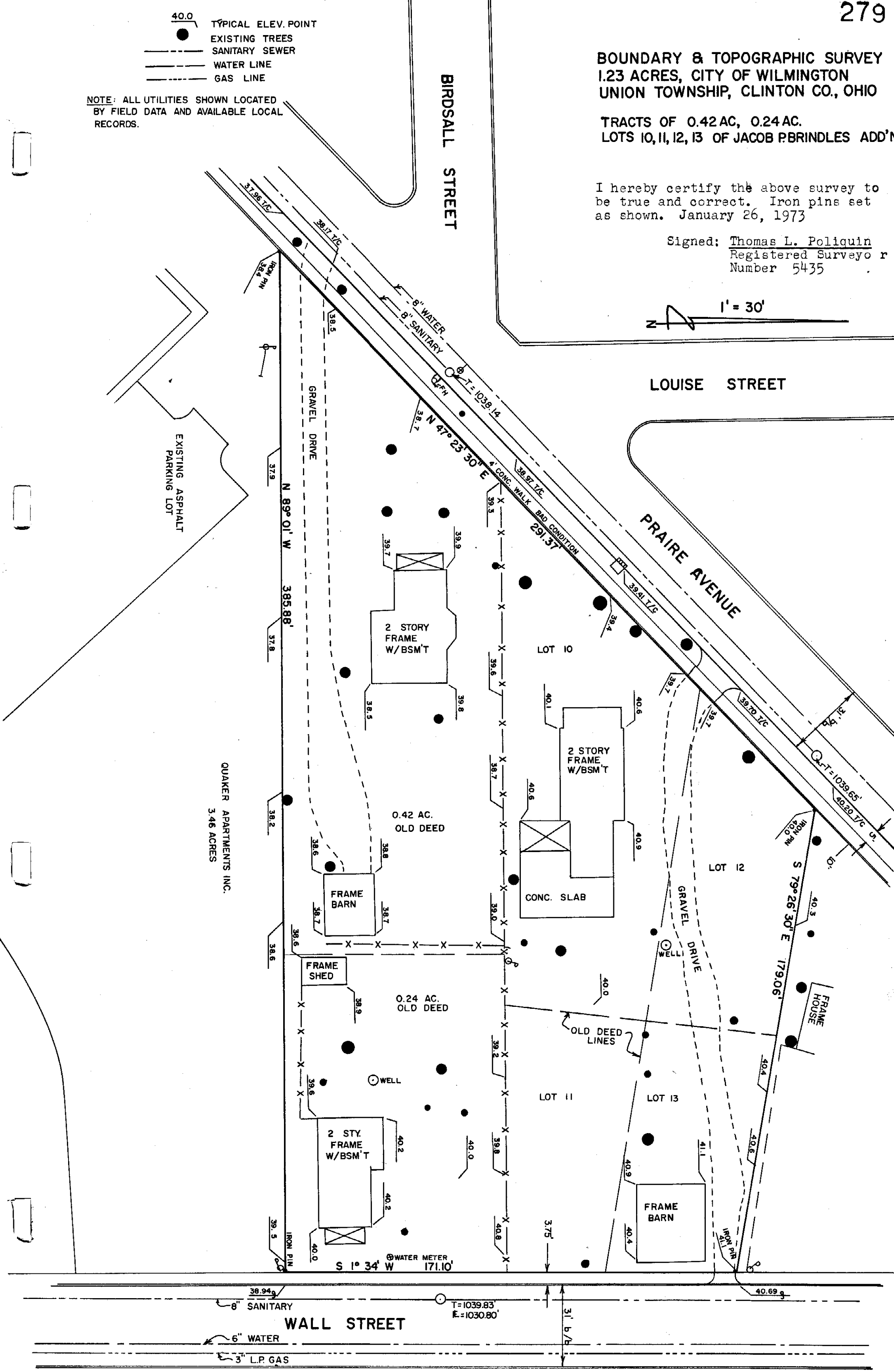
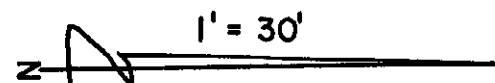
NOTE: ALL UTILITIES SHOWN LOCATED BY FIELD DATA AND AVAILABLE LOCAL RECORDS.

**BOUNDARY & TOPOGRAPHIC SURVEY  
1.23 ACRES, CITY OF WILMINGTON  
UNION TOWNSHIP, CLINTON CO., OHIO**

TRACTS OF 0.42 AC, 0.24 AC.  
LOTS 10, 11, 12, 13 OF JACOB P. BRINDLES ADD'N

I hereby certify the above survey to be true and correct. Iron pins set as shown. January 26, 1973

Signed: Thomas L. Poliquin  
Registered Surveyor  
Number 5435



QUAKER APARTMENTS INC.  
3.46 ACRES

EXISTING ASPHALT  
PARKING LOT

WALL STREET

8" SANITARY

6" WATER

3" L.P. GAS

T=1039.83  
E=1030.80

WATER METER  
S 1° 34' W 171.10'

S 79° 26' 30" E 179.06'

0.42 AC.  
OLD DEED

0.24 AC.  
OLD DEED

LOT 10

LOT 11

LOT 12

LOT 13

2 STORY  
FRAME  
W/BSM'T

2 STORY  
FRAME  
W/BSM'T

FRAME  
BARN

CONC. SLAB

FRAME  
SHED

FRAME  
BARN

FRAME  
HOUSE

8" WATER  
8" SANITARY

4" CONC. WALK  
BAD CONDITION

PRAIRIE AVENUE

BIRDSALL STREET

LOUISE STREET

GRAVEL DRIVE

GRAVEL DRIVE

N 89° 01' W 385.88'

N 47° 23' 30" E

S 79° 26' 30" E 179.06'

S 1° 34' W 171.10'

IRON PIN

IRON PIN

IRON PIN

IRON PIN

IRON PIN

IRON PIN

IRON PIN

IRON PIN

IRON PIN

IRON PIN

IRON PIN

IRON PIN

IRON PIN

IRON PIN

IRON PIN