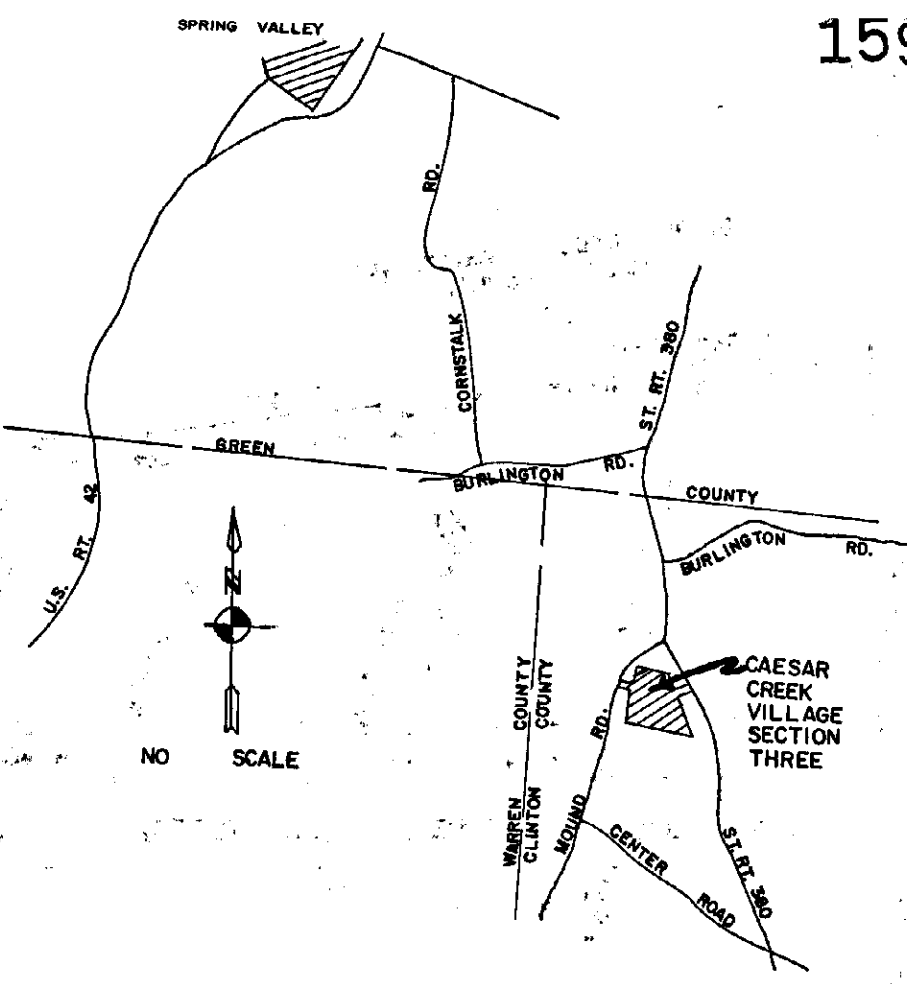
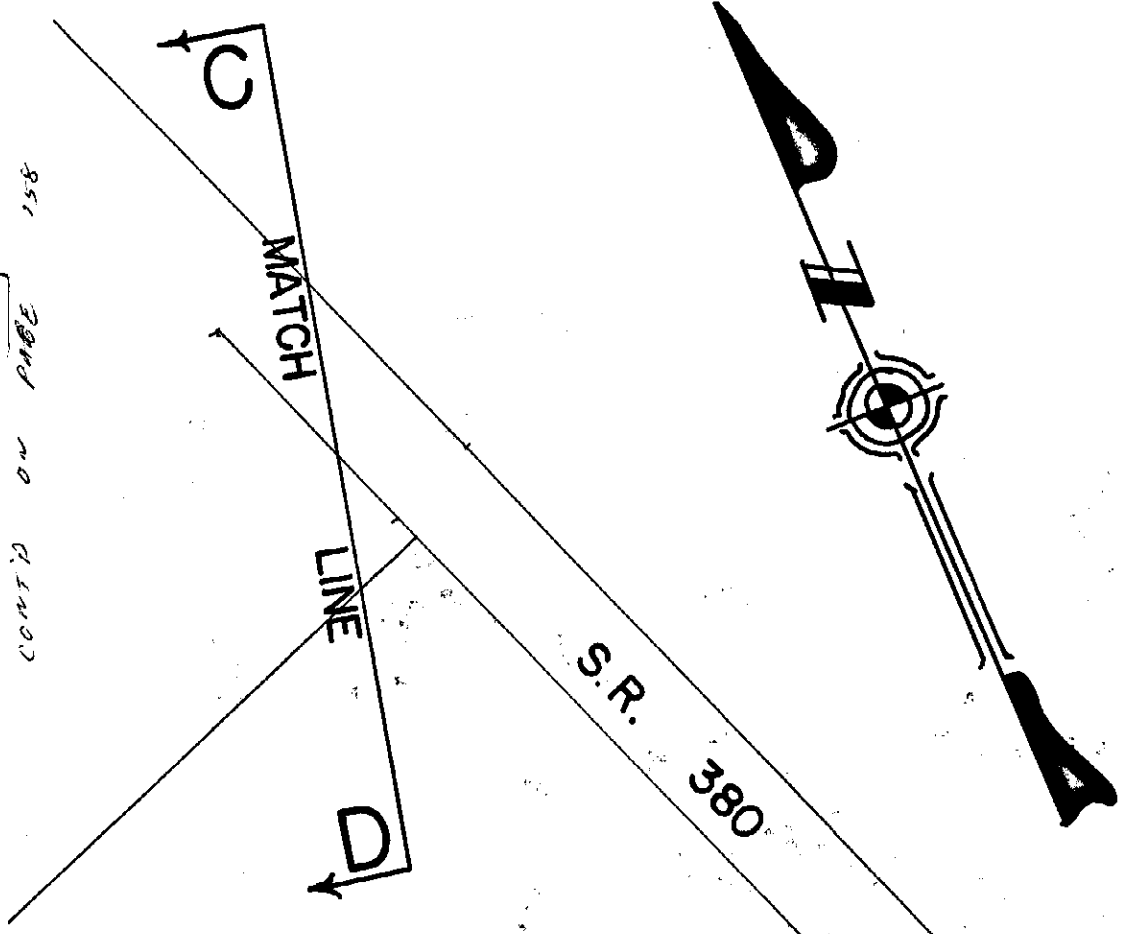


CONT'D ON PAGE 158



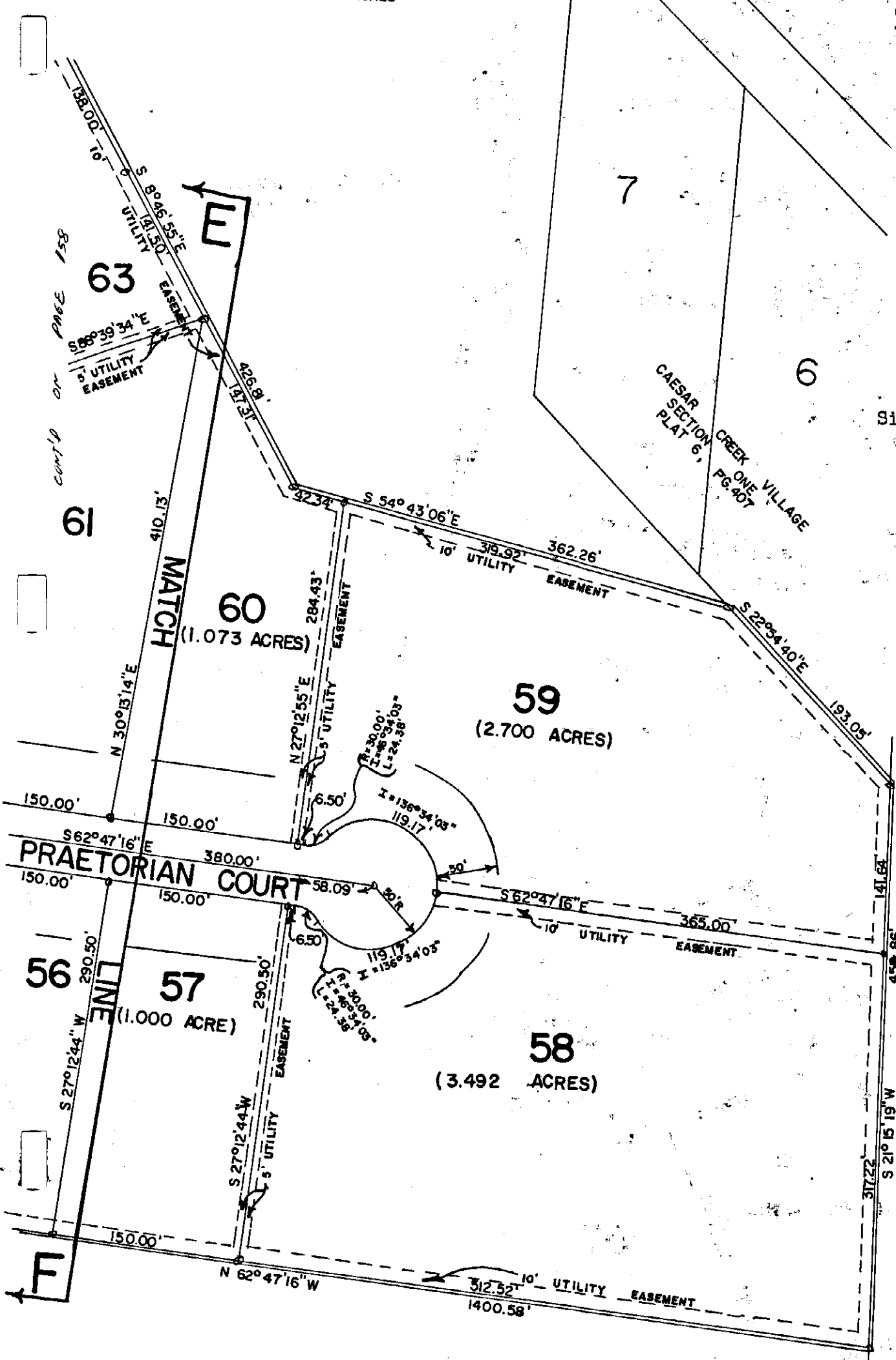
CAESAR CREEK VILLAGE SECTION THREE
 53.608 ACRES
 M.S. 570
 CHESTER TOWNSHIP
 CLINTON COUNTY, OHIO
 3-3-75

DOT'S SUPER MARKET, INC.
 5.000 ACRES

The measurements are certified correct and monuments are set as shown. Curved distances are measured on the arc.

P.A. Rodenbeck & Associates
 Signed: Harry Hahn
 Registered Surveyor No. 5575

DEVELOPER:
 Dot's Super Market, Inc.



PRAETORIAN COURT

57 (1.000 ACRE)

60 (1.073 ACRES)

59 (2.700 ACRES)

58 (3.492 ACRES)

CAESAR CREEK VILLAGE
 SECTION ONE
 PLAT 6, PG. 407

63

61

56

55

54

53

52

51

50

49

48

47

46

45

44

43

42

41

40

39

38

37

36

35

34

33

32

31

30

29

28

27

26

25

24

23

22

21

20

19

18

17

16

15

14

13

12

11

10

9

8

7

6

5

4

3

2

1