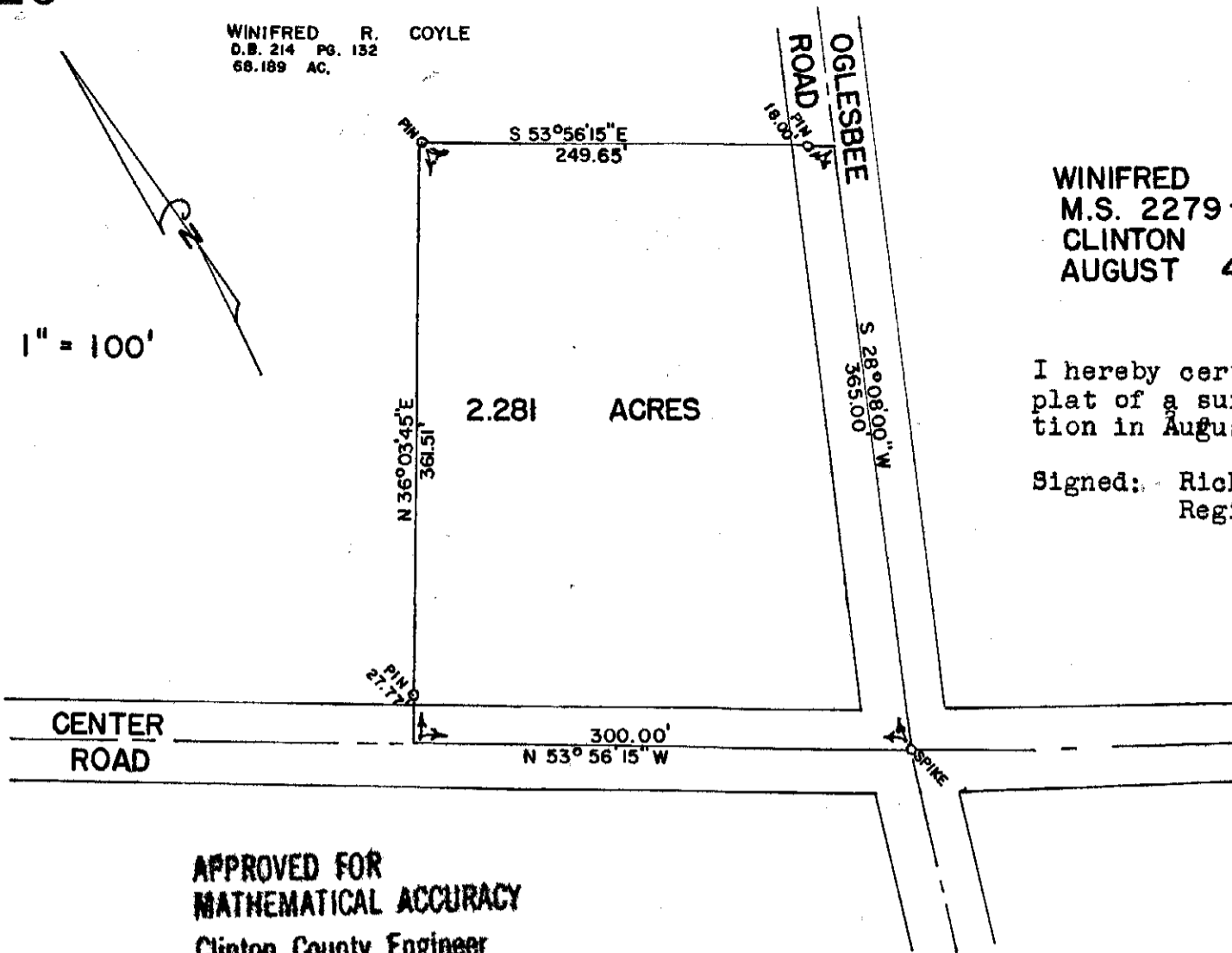


WINIFRED R. COYLE
D.B. 214 Pg. 132
66.189 AC.

1" = 100'



WINIFRED R. COYLE
M.S. 2279 - UNION TWP
CLINTON COUNTY, OHIO
AUGUST 4, 1973

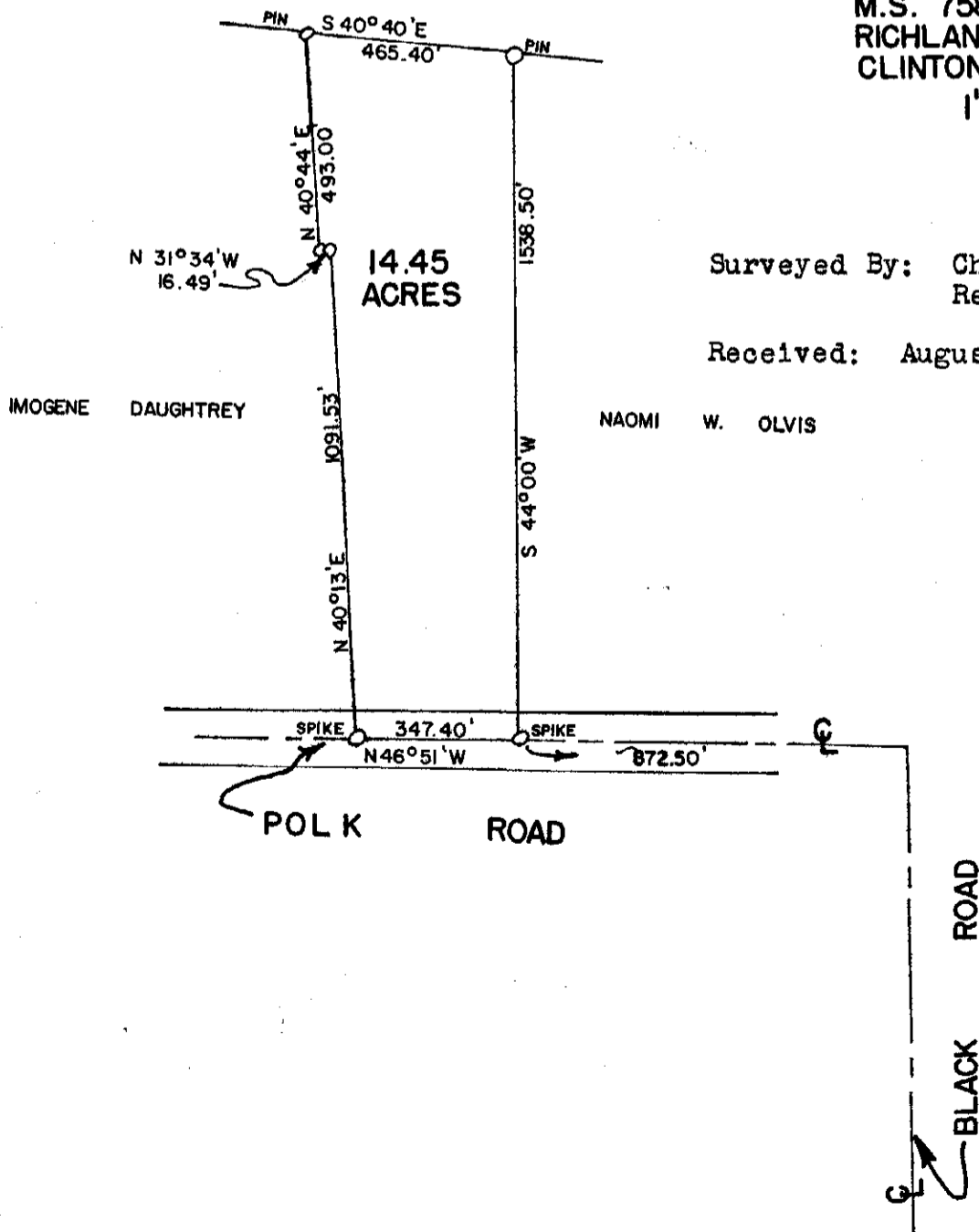
I hereby certify this to be a correct
plat of a survey made under my direc-
tion in August 1973.

Signed: Richard B. Roll
Registered Surveyor No. 4957

APPROVED FOR
MATHEMATICAL ACCURACY
Clinton County Engineer

Per *M. Watters* 2.281 Ac.
MAY 21 1990

NAOMI WALKER OLVIS
M.S. 758
RICHLAND TWP.
CLINTON CO., OHIO
1" = 400'



Surveyed By: Charles M. Ryan
Registered Surveyor No. 5383

Received: August 15, 1973

NAOMI W. OLVIS