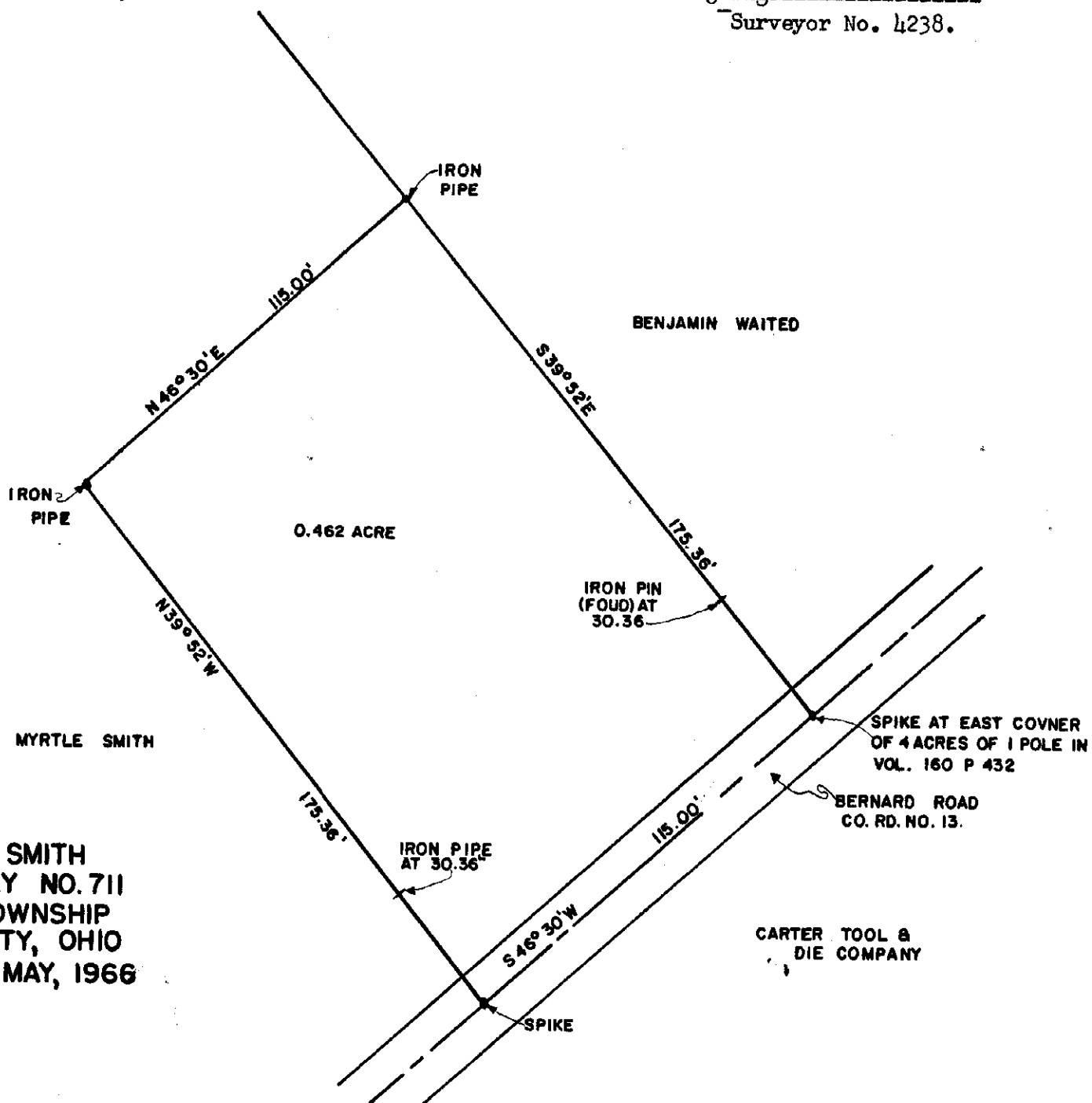


FLOREA REAL ESTATE, INC.
 MILITARY SURVEY NO. 2386
 GREEN TWP. CLINTON CO., OHIO
 SCALE 1"=200 NOVEMBER, 1966

I do hereby certify this plat to be true delineation of an actual survey and corners have been set as shown

West Union, Ohio
 November 26, 1966.

Robert E. Satterfield
 Surveyor No. 4238.



MYRTLE R. SMITH
 MILITARY SURVEY NO. 711
 GREEN TOWNSHIP
 CLINTON COUNTY, OHIO
 SCALE 1"=40' MAY, 1966

I do hereby certify this plat to be a true delineation of an actual survey and corners have been set as shown.

West Union, Ohio
 May, 1966

Robert E. Satterfield
 Surveyor No. 4238.