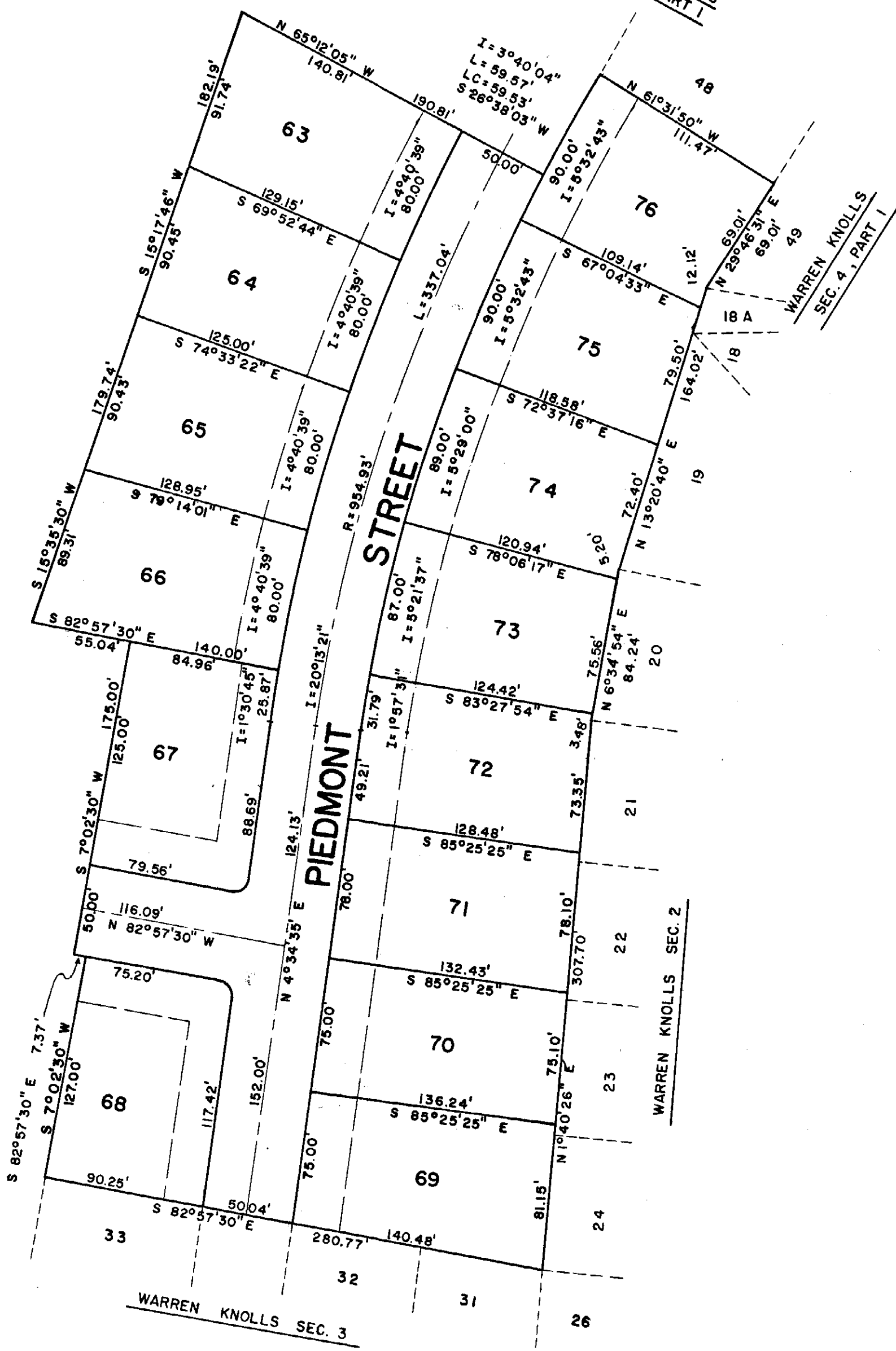


WARREN KNOLLS
SEC. 4, PART I



WARREN KNOLLS SUB-DIVISION
 SECTION FOUR - PART TWO
 4.173 ACRES OUT OF CLIFTON J. WARREN AND ALMA T. WARREN'S LAND
 CITY OF WILMINGTON
 MILITARY SURVEY NO. 2471
 UNION TOWNSHIP
 1" = 60'

CERTIFICATION

I hereby certify that this map is a true and complete survey made under my direction; iron pin monuments will be set at all lot corners upon completion of construction.

Raymond Kline
Registered Engineer & Surveyor