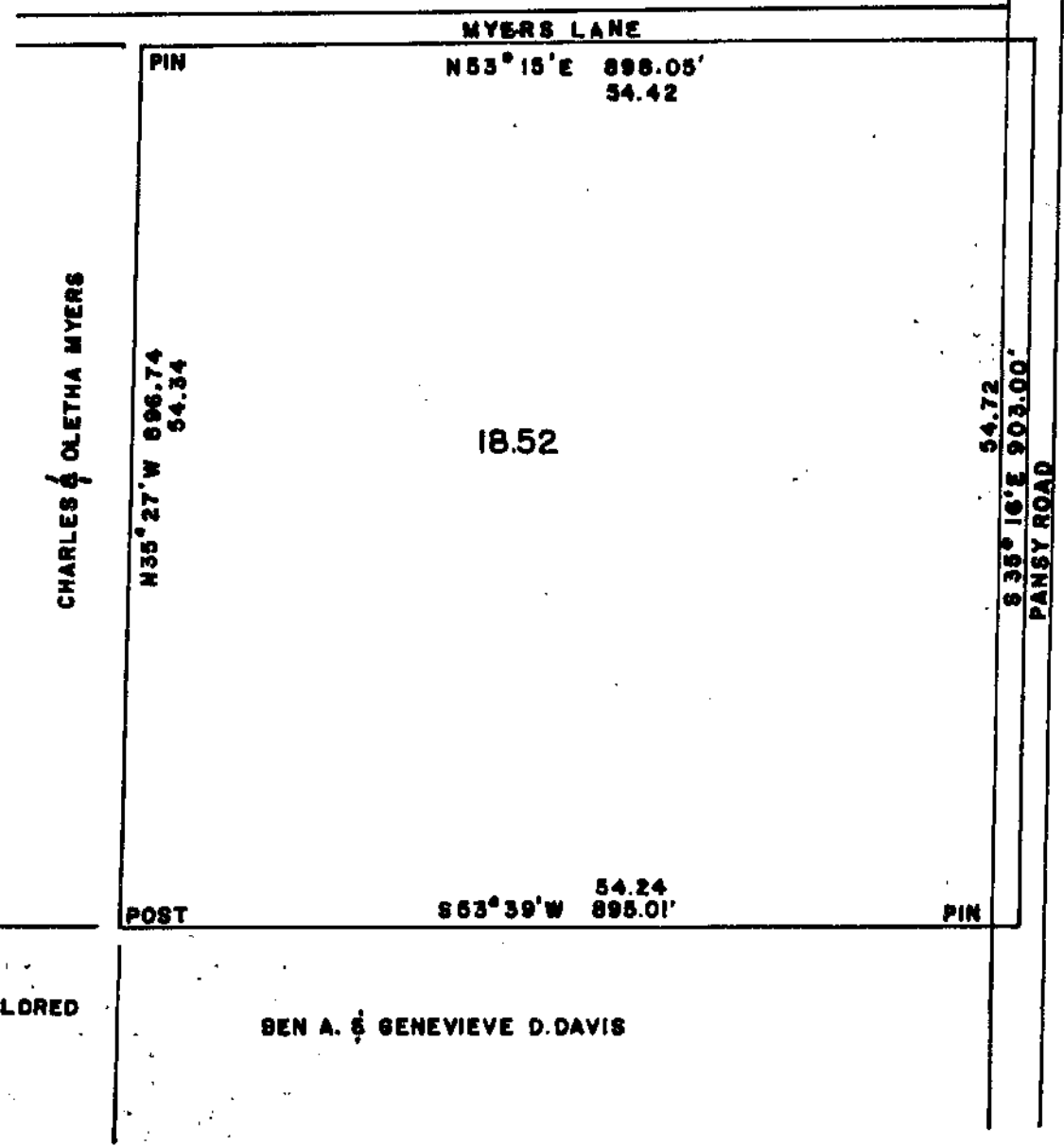
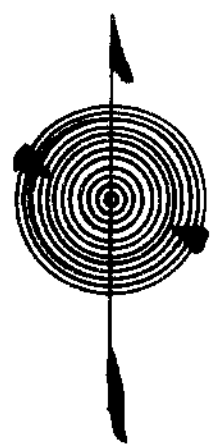


SECTION TWO McDERMOTT VILLAGE  
 A SUBDIVISION OF 2.035 ACRES IN THE  
 CITY OF WILMINGTON, O. CLINTON CO.  
 M.C. 1957

SECTION ONE McDERMOTT VILLAGE SUBDIVISION  
 PLAT BOOK 5, PAGES 271-272

I HEREBY CERTIFY THAT THIS PLAT IS A  
 TRUE AND COMPLETE SURVEY MADE BY ME AND  
 COMPLETED DURING SEPTEMBER 1960; THAT ALL  
 MEASUREMENTS ARE CORRECT AND MONUMENTS  
 SET AS SHOWN.

P. R. GRANT  
 REGISTERED CIVIL ENGINEER &  
 SURVEYOR. WILMINGTON, OHIO



CHARLES & OLETHA MYERS  
 MILITARY SURVEY #2252  
 VERNON TOWNSHIP  
 CLINTON COUNTY, OHIO  
 1" = 200'

I HEREBY CERTIFY THE ABOVE TO  
 BE A CORRECT PLAT OF A SURVEY  
 MADE BY ME ON SEPTEMBER 28, 1960

Maynard Boston  
 REGISTERED SURVEYOR NO. 3966

EVERETTE MILDRED  
 BROWN

BEN A. & GENEVIEVE D. DAVIS