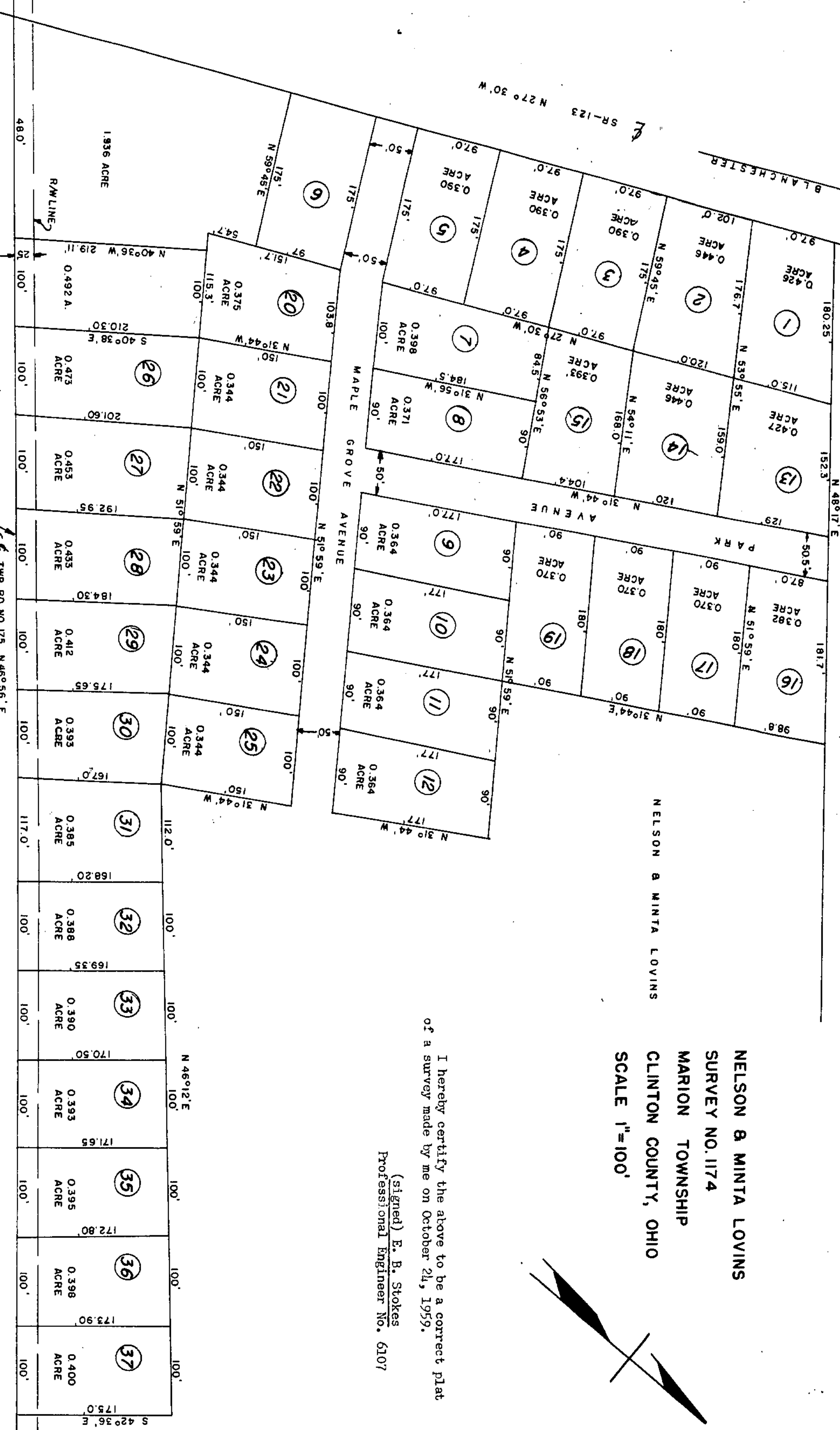
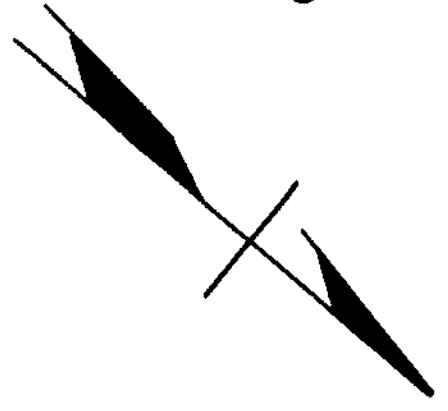


MARION POST NO. 179
AMERICAN LEGION



NELSON & MINTA LOVINS
 SURVEY NO. 1174
 MARION TOWNSHIP
 CLINTON COUNTY, OHIO
 SCALE 1"=100'



I hereby certify the above to be a correct plat
 of a survey made by me on October 24, 1959.

(signed) E. B. Stokes
 Professional Engineer No. 6107

W E TWP. RD. NO. 175 N 46°56' E

R/W LINE

R/W LINE