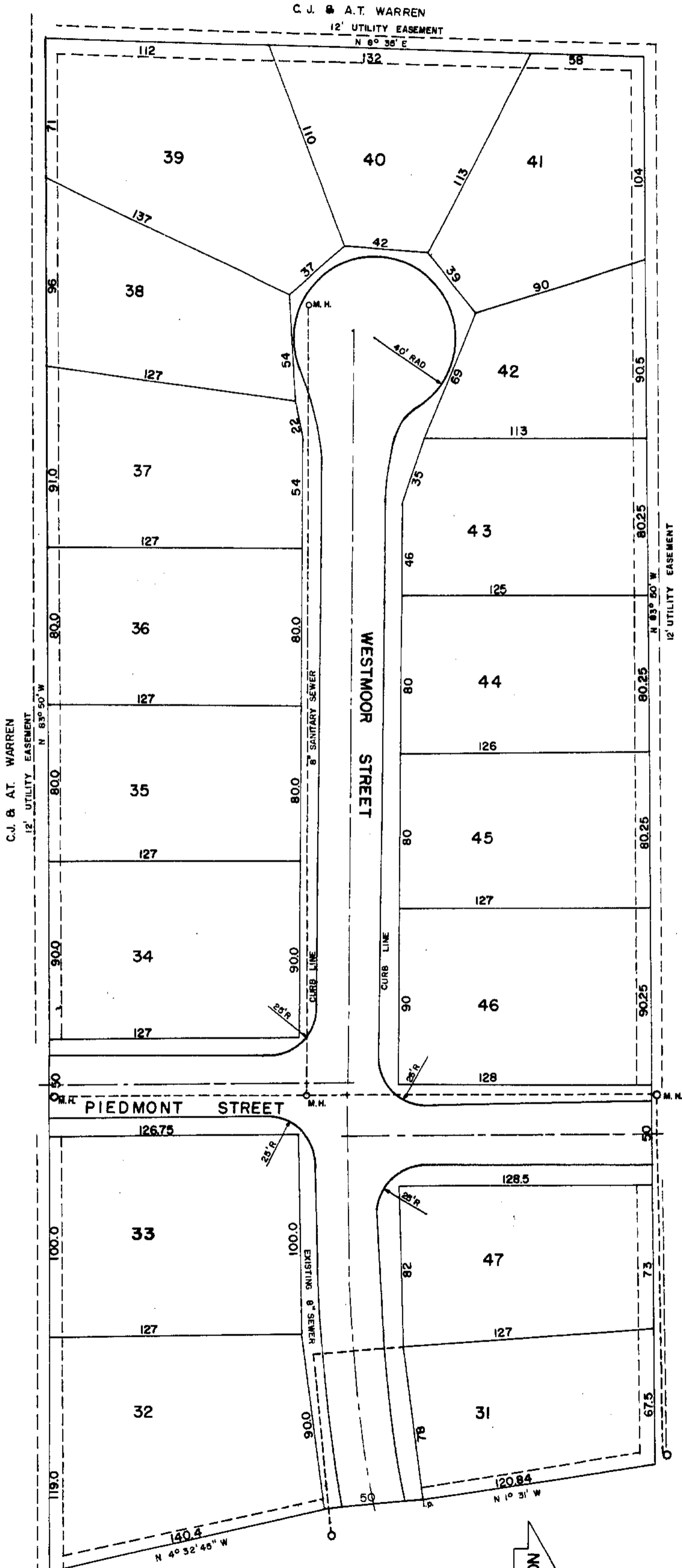


C. J. & A. T. WARREN

12' UTILITY EASEMENT
N 8° 36' E



**WARREN KNOLLS SUBDIVISION
SECTION THREE
MILITARY SURVEY NO. 2471
CITY OF WILMINGTON
UNION TOWNSHIP
CLINTON COUNTY, OHIO**

I hereby certify that this map is a true and complete survey made by me on July 16, 1959; that all measurements shown are correct and monuments set as shown. Chord distances are shown for curves.

(signed) R.R. Grant
Registered Civil Engineer and Surveyor