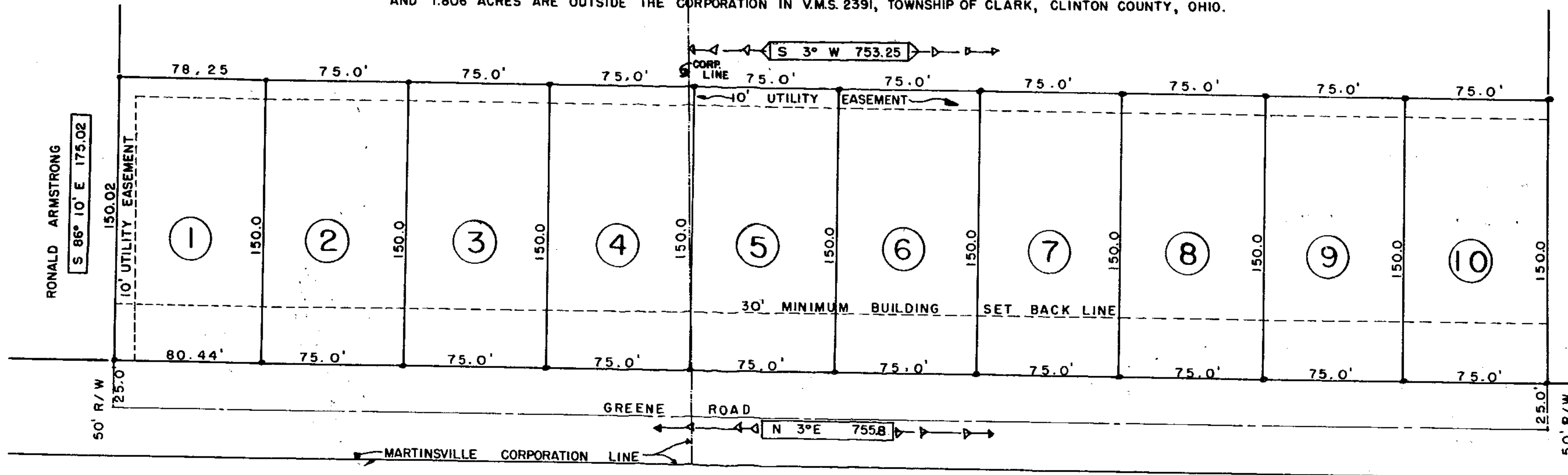


# ROLLIN ACRES SUBDIVISION

A SUBDIVISION OF 3.031 ACRES OF WHICH .433 ACRES ARE IN ROADWAY R/W, 1.225 ACRES ARE IN MARTINSVILLE CORPORATION, AND 1.806 ACRES ARE OUTSIDE THE CORPORATION IN V.M.S. 2391, TOWNSHIP OF CLARK, CLINTON COUNTY, OHIO.



SCALE 1" = 40'

I HEREBY CERTIFY THAT, DURING THE MONTH OF APRIL 1960, I MADE A SURVEY OF THE PLAT SHOWN HEREON, AND THAT THIS DRAWING HAS BEEN MADE IN ACCORDANCE WITH THE FIELD NOTES OF SAID SURVEY.

*R.R. Grant*

R. R. GRANT, REG. CIVIL ENGINEER & SURVEYOR, WILMINGTON, OHIO